

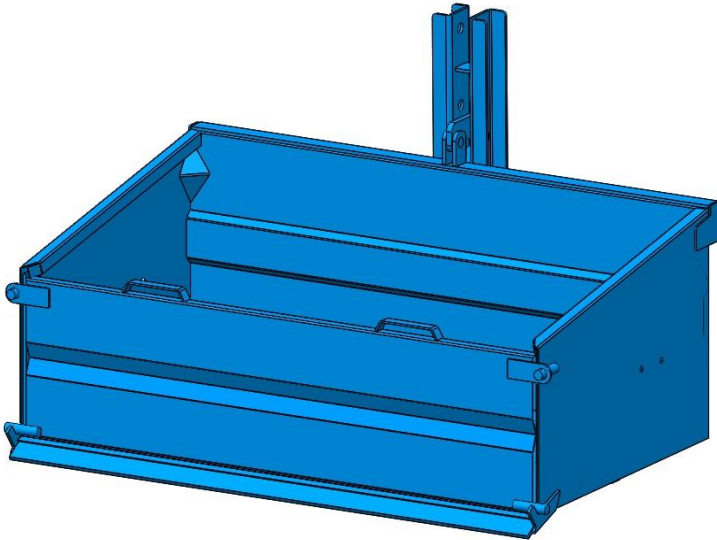


**GIBNEY STEEL PRODUCTS LTD.**



**T2 Transport Box (4ft,5ft+6ft)**

**USER'S HANDBOOK**



GIBNEY STEEL PRODUCTS LTD.

Moylagh, Oldcastle,

Co. Meath

Tel: 049 - 8541302 Fax: 049 - 8541760

Email: [sales@gibneysteel.com](mailto:sales@gibneysteel.com) Web: [www.gibneysteel.com](http://www.gibneysteel.com)

# Contents

Introduction .....	3
Safety Notes .....	3
Maintenance .....	6
Operation .....	7
<i>Mounting Implement onto tractor:</i> .....	7
<i>Using The Transport Box</i> .....	8
EU DECLARATION of CONFORMITY.....	9
European Standards.....	10
Standard Conditions of Sale.....	12

# Introduction

The Transport Box you have just purchased has been manufactured by Gibney Steel Products of Oldcastle, Co. Meath. Provided the instructions for the operation and maintenance of this unit are followed, the equipment will work perfectly for many years.

## Safety Notes

- The health and safety of the operator is paramount while operating the Transport Box.
- Your supplier, on delivery, should have given you an explanation on the operation and maintenance of the Transport Box. It is important that you read and understand these instructions before operating this machine for the first time.
- Anyone within the vicinity of the machine must observe a safe distance of at least 5 metres from the implement.
- All personnel who are involved in the authorisation, operation and maintenance of the machine must have read and understood this User Manual before operating the Transport Box.
- Incorrect use or mishandling of the machine can lead to injury of the operator, other persons or animals within the area of the machine.

- Improper use of the machine can endanger the machine, material assets of the owner or third persons and lead to performance issues with the machine.
- It is the responsibility of the owner of the implement to provide the operator with the User Manual and ensure that they have read and understood them before they work the machine.
- It is the obligation of the owner of the machine to ensure that only authorised personnel operate the implement.
- It is the responsibility of the owner to ensure that there are no third persons or animals within the area of the machine before operation.
- Ensure the Transport Box is correctly and securely attached to the back of your operating vehicle.
- Detaching the implement from the tractor requires extra care. Always ensure that the machine is stable and positioned on a safe and level surface before removal.
- Attaching and detaching of the implement should be carried out by only one operator and there should be no other people within the area of the implement or in the tractor.

- Prior to operating the implement ensure that you are familiar with all the components, functions and controls of the machine.
- Under no circumstances should anyone under the age of 16 operate the implement.
- Keep hands and limbs well away from the moving parts of the implement and from between the hitch and the main body to avoid injury.
- DO NOT make any attempts to manually move the implement
- DO NOT attach the implement to a tractor which would become unstable when the implement is being operated at its full capacity. Take note of the maximum loads allowed on the machine.
- Never operate the machine on ground where it will render the tractor unstable. Take extra care when the machine is being operated on sloping ground.
- The Transport Box is not to be used under any circumstance as a means of personal transport as it is unsuitable for the safe transportation of passengers.

# Maintenance

This unit is designed to incorporate low maintenance, but the following points should be taken note of:

- Before performing any maintenance on the implement ensure that your tractor is powered off, the handbrake is applied and the ignition key has been removed.
- The machine should be propped up with appropriate support before performing any maintenance work.
- All moving parts should be checked before use to ensure nothing is worn or damaged and to ensure none of the fasteners have become loose over time.
- Ensure that all hinges are greased frequently and check for any damages on the implement that would hinder the safe operation of the implement.
- If any parts are worn, they should be replaced immediately before use.
- Ensure that all warning stickers are always kept clean and in good condition.
- The manufacturer will not be held accountable for any damages or injuries caused by unauthorised repair, alterations or misuse of the implement.

# Operation

## *Mounting Implement onto tractor:*

**Ensure all safety notes have been read, and fully understood before attaching or using the GSP Transport Box.**

**Step 1:** Ensure Transport box is on level ground and that there are no obstructions to impede access to the 3-point linkage.

**Step 2:** Carefully reverse tractor until arms are in correct position to attach onto arm linkage of Transport box.

**Step 3: After arm linkage has been attached securely,** the tractor top link should be adjusted to suitable length and attached to tractor and transport box.

**Step 4:** Ensure tripping rope is anchored in a location where it can be easily accessed by the operator. i.e. close to back window of tractor, within arm's reach of operator.

***NOTE: Ensure tripping rope is in good condition and is not damaged before use. If it appears damaged or frayed, it should be replaced immediately before further use.***

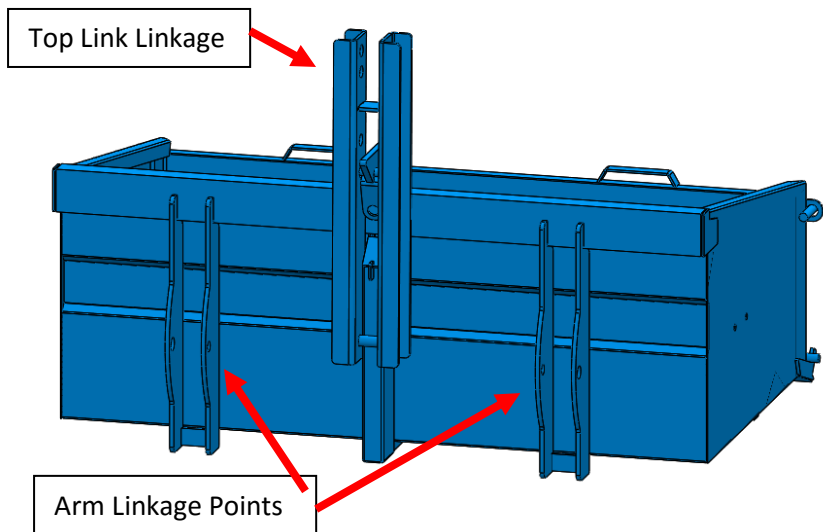
## *Using The Transport Box*

**Step 5:** Ensure that the Transport Box is properly and securely fitted to tractor before operation.

**Step 6:** Lift box from ground using the tractors lift arms.

**Step 7:** The trip mechanism on the transport box can be worked by pulling on the rope to trip the box / empty a load. To reset the box back to its fixed position, simply drop the box to ground level where the trip mechanism will automatically reset. **Always ensure the tripping mechanism has returned to its lock position before reusing after tipping.**

**Step 8:** When removing the box from the tractor, **steps 2-4** on previous page should be repeated in reverse order, making sure to set the power box on level ground.



**FIG. 1 LINKAGE POINTS**



# EU DECLARATION of CONFORMITY



Machinery CE Certification

J. G. Munro BE. BSc. C. Eng.

Consulting Engineer



Blackhall  
Clane  
Co. Kildare  
Tel: 045 861302  
Mob: 087 6699587  
E-mail: jgm\_first@eircom.net

## DECLARATION OF CONFORMITY

I, John G. Munro, consulting advisor to the National Standards Authority of Ireland, hereby declare that the "TRANSPORT BOX, including Models 4F, 5F, 6F & 7F as manufactured by Gibney Steel Products Ltd, Moylagh, Oldcastle, County Meath, meets with the requirements of the following EU Directives and the European Communities (Machinery) Regulations, 2008 [SI 407 of 2008]

- COUNCIL DIRECTIVE 2006/42/EC MACHINERY

We also confirm that the series of equipment meets the following European Standards; -

EN ISO 14121-1:2012 SAFETY OF MACHINERY - PRINCIPLES FOR RISK ASSESSMENT

EN ISO 4413:2010 HYDRAULIC FLUID POWER-GENERAL RULES & PRINCIPLES FOR SYSTEMS AND COMPONENTS

On Behalf of John G. Munro BE. BSc. C. Eng.

JOHN G. MUNRO BE BSC C ENG  
CEAL Ref W01-004B

FEB 2018

**J.G. MUNRO BE BSc C Eng**  
**CONSULTING ENGINEERS**  
CLANE, CO. KILDARE  
Ref: \_\_\_\_\_ Date: \_\_\_\_\_  
Tel: 045 861302  
Fax: 045 861911  
Email: jgm\_first@eircom.net

## European Standards.

Commencing with the design and the various tasks involved through to the supply of the product to the customer, Gibney Steel Products have ensured that, where reasonably practicable, all appropriate EU standards have been employed.

The following harmonised standards are an example of standards employed during the design and construction of the assembly;

- EN ISO 12100:2010 – Safety of Machinery-General Principles for Design-Risk Assessment & Risk Reduction.
- EN ISO 4414:2010 – Hydraulic Fluid Power-General Rules & Safety Requirements for Systems & their Components.

## Spare Parts

<b>Item</b>	<b>Description</b>	<b>Part No.</b>	<b>Quantity</b>
1	Dual Implement Pin	*Z202235	2
2	Linch Pins (7/16")	*P385	2
3	Linch Pins (1/4")	*P384	2
4	Spring	GSP-SPR01	1

**\* McHugh Components Part Numbers**

# Standard Conditions of Sale

1. **Interpretation:** (in these conditions of sale)

**"Supplier"** means Gibney Steel Products Ltd, Moylagh, Oldcastle, Co. Meath. Registered in Ireland, Number: 78398

**"Customer"** means the person who purchases the Goods.

**"Goods"** means the goods ordered by the customer from the Supplier, in an order which has been accepted by the Supplier.

2. **Warranties:** The Supplier warrants that:

At the time of sale, it will have title to see the goods to the customer; and the goods sold to the customer will conform to the specification for them published by the supplier or their manufacturer.

3. **Application**

These conditions of sale shall apply to any purchase of goods under an order which is accepted by the supplier. No other terms shall apply to the sale of goods, including any standard conditions of purchase of the customer or any other document issued by the customer.