

ENGLISH

Hakki Pilke 25

Hawk

SPARE PARTS MANUAL FOR THE FIREWOOD PROCESSOR



MAASELÄN KONE OY

Valimotie 1, FI-85800 Haapajärvi, Finland

Tel. +358 (0) 8 772 7300, Fax +358 (0) 8 772 7320

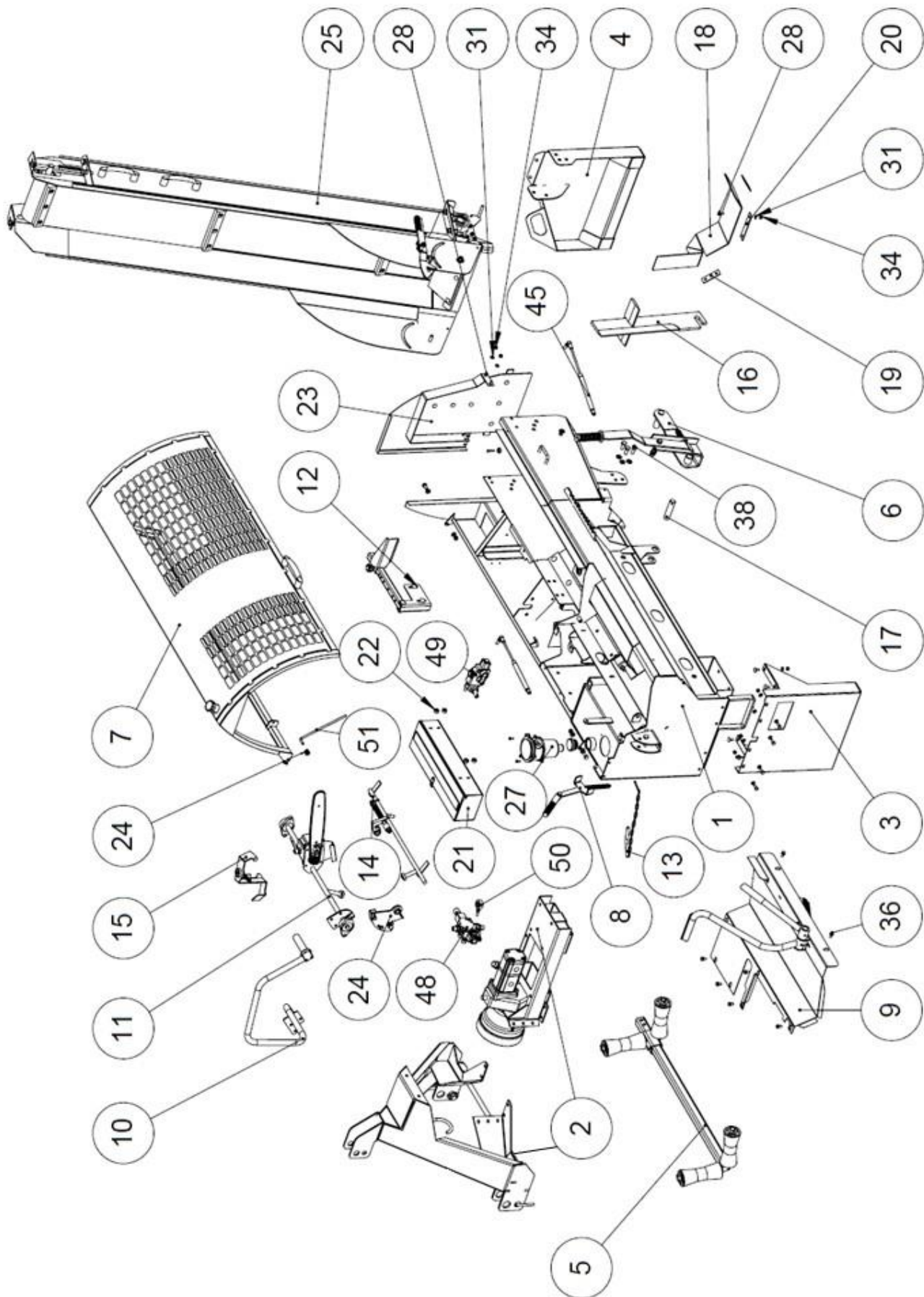
info@maaselankone.fi

www.maaselankone.fi

Contents

1.1	Exploded view of the machine.....	3
1.2	Machine parts list.....	4
1.3	Assembly of the electric motor (50009631)	5
1.4	Input table extension rod	6
1.5	Upper roller for the conveyor	7
1.6	Saw drive head.....	8
1.7	Parts list of the saw drive head.....	9
1.8	Splitting cylinder	10
1.9	Splitter rod	11
1.10	Lock return mechanism	12
1.11	Output conveyor belt.....	13
1.12	Power transmission, TR model	14
1.13	Front guard	15
1.14	Splitting	16
1.15	Input table + wood gripper (50009166).....	17
1.16	Rear light panel	18
1.17	Log length limiter	19
1.18	Protective cage (50009207)	20
1.19	Splitting knife adjuster	21
1.20	Splitter control lever	22
1.21	Splitting valve (50009232)	23
1.22	Lock return mechanism 2.....	24
1.23	Fastening triangle (50011333)	25
1.24	Chassis.....	26

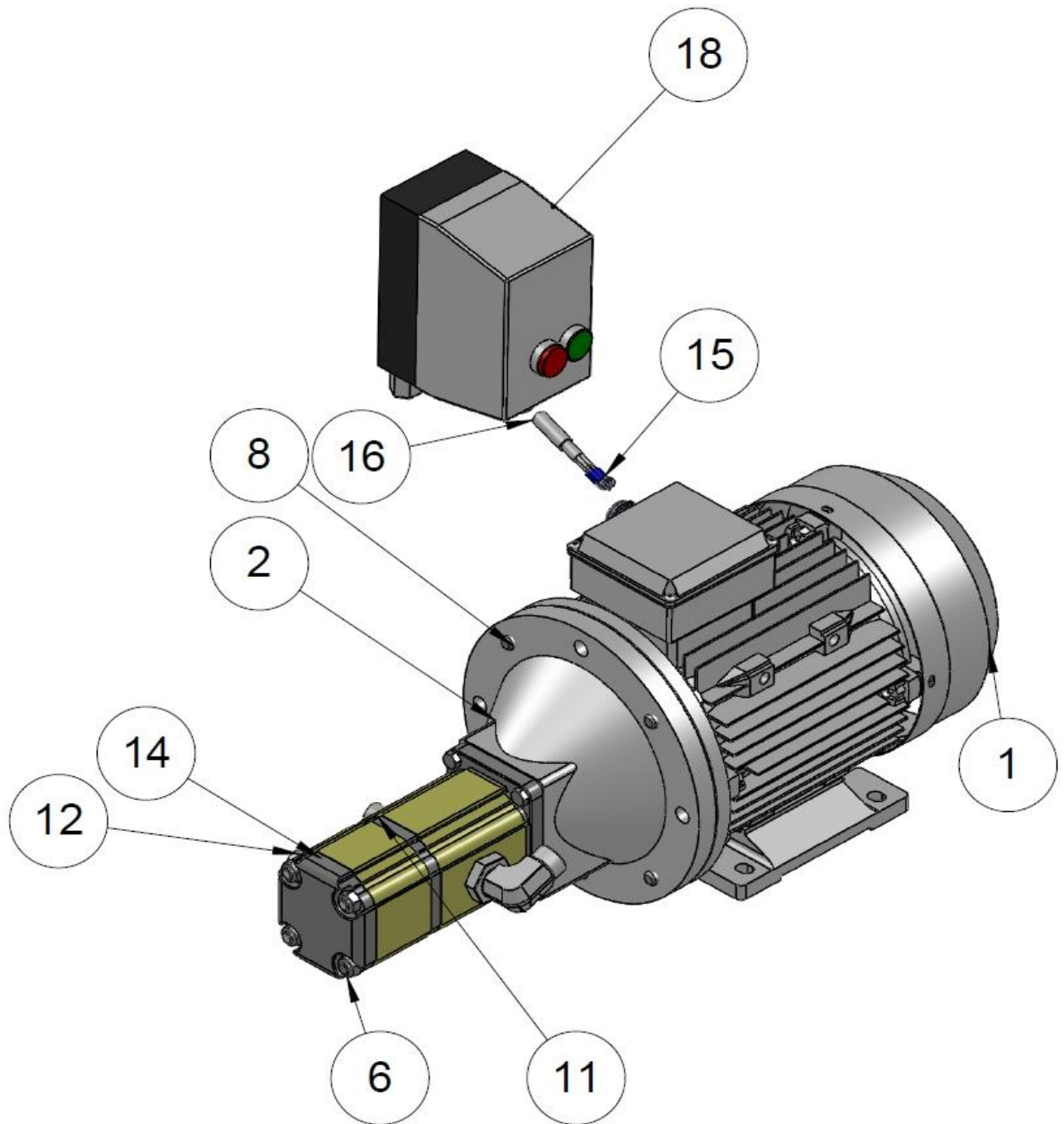
1.1 Exploded view of the machine



1.2 Machine parts list

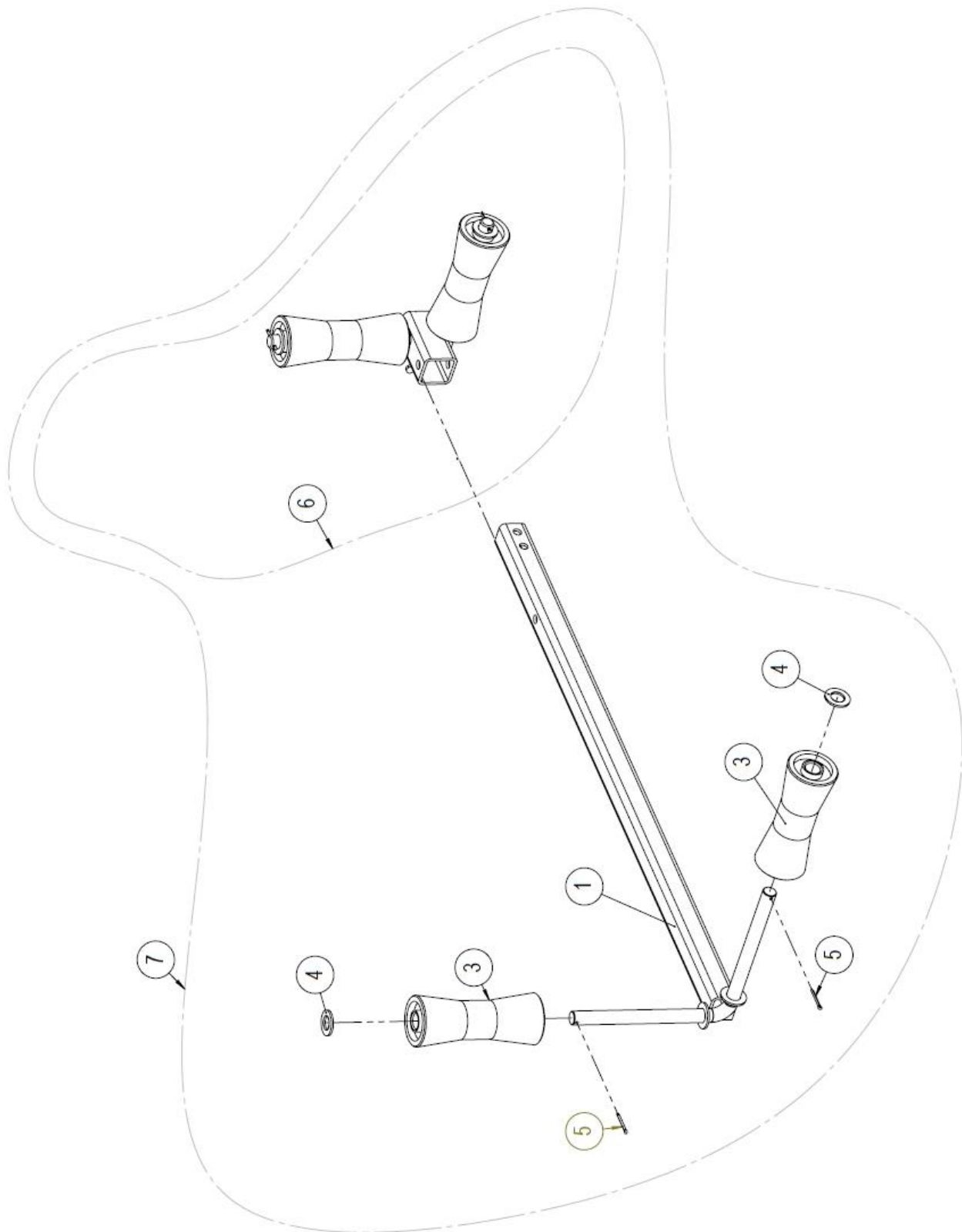
No.	Item	Number	Standard + dimensions	Pcs
52	Reinforcement	50010002	PL3	1
51	Safety rod	50005621	Ø8	1
50	Operating rod for the valve	50007552		1
49	Saw valve	97812	P35	1
48	Splitting valve	50009232		1
49	Fastening triangle	50011333		1
46	Support	50010059		1
45	Gas spring	50009549		2
44	Hex socket screw	96386	M6x20	1
43	Filler cap	97429		1
42	PVC button	95594		1
41	Hex head screw	96110	DIN 931 M12x70	2
40	Hex head screw	96139	DIN 933 M10x25	2
39	Hex head screw	96157	DIN 933 M6x16	2
38	Hex head screw	96146	DIN 933 M12x30	7
37	Hex head screw	96161	DIN 933 M8x20	4
36	Flange bolt M8x16	96172		8
35	Locking nut	96218	DIN 985 M12	9
34	Locking nut	96222	DIN 985 M8	11
33	Locking nut	96068	DIN 985 M10	3
32	Washer	96058	DIN 125 A12	16
31	Washer	96061	DIN 125 A8	15
30	Washer	96049	DIN 125 A10	8
29	Lock screw	96189	DIN 603 M12x40	1
28	Lock screw	96187	DIN 603 M8x20	7
27	Filter	97291		1
26	Saw bar fastener	50009665	PL8 30x50	1
25	Conveyor	50004166		1
24	Lock/return mechanism	50009233		1
23	Front guard	50007973		1
22	Bushing	50009664	Ø20 L=10	4
21	Toolbox	50005582		1
20	Rubber fastening lower plate	37596	PL3 30x140	1
19	Rubber fastening plate	37595	PL3 30x85	2
18	Protective mat	50006567		1
17	Pin	50005593	Ø25 L=100	1
16	Splitting knife, four-way	50005609		1
15	Trigger assembly	50009584		1
14	Splitter rod	50005283		1
13	Locking pin	50009100		1
12	Log length limiter	50009169		1
11	Drive head	50002201		1
10	Operating lever for cutting	50009227		1
9	Input table	50009166		1
8	Reversing lever	50009231		1
7	Protective cage	50009207		1
6	Splitting knife adjuster	50009218		1
5	Extension roller	10056		1
4	Rear leg	50009094		1
3	Front leg	50009095		1
2	Three-point fastening, assembly	50007145		1
1	Hawk frame	50009103		1

1.3 Assembly of the electric motor (50009631)



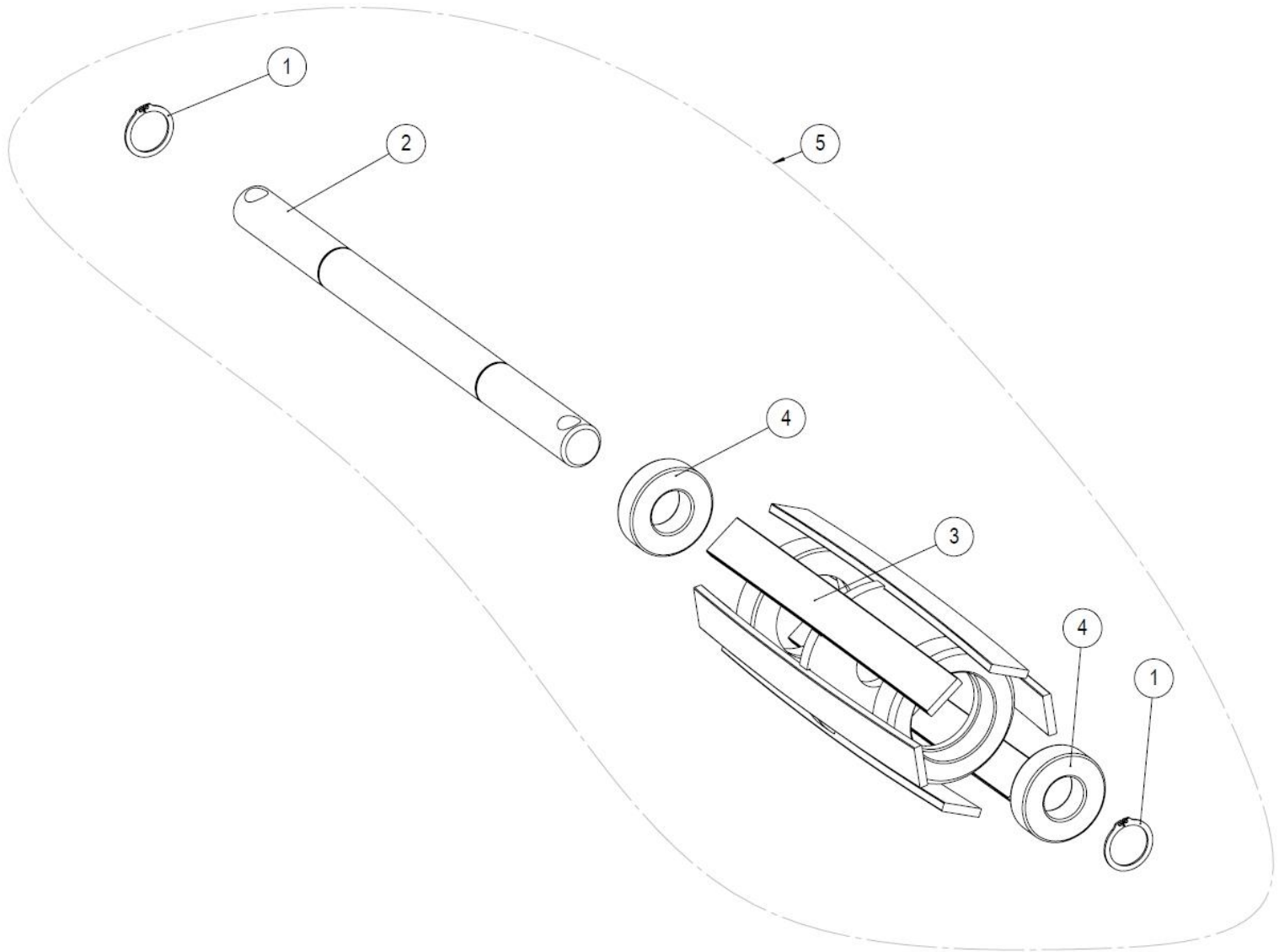
No.	Item	Part number	Standard/dimensions	Pcs
1	Electric motor	95624	4 kW, 380 V, 1500 rpm	1
2	Intermediate flange	97836		1
6	Hydraulic pump (electric/TR model)	97324		1
	Hydraulic pump, combustion engine model	97719		1
8	Hex head screw	96148	DIN 933/M12x40	4
11	Double nipple, straight	97204	1/2" x 1/2"	1
12	Double nipple, straight	97203	3/8" x 1/2"	1
14	USIT seal	97213	1/2"	2
15	Split ring, blue	96357	M5	4
16	Rubber cable, 1.3 m	95166		1
18	MS starter	95151	4 kW	1

1.4 Input table extension rod



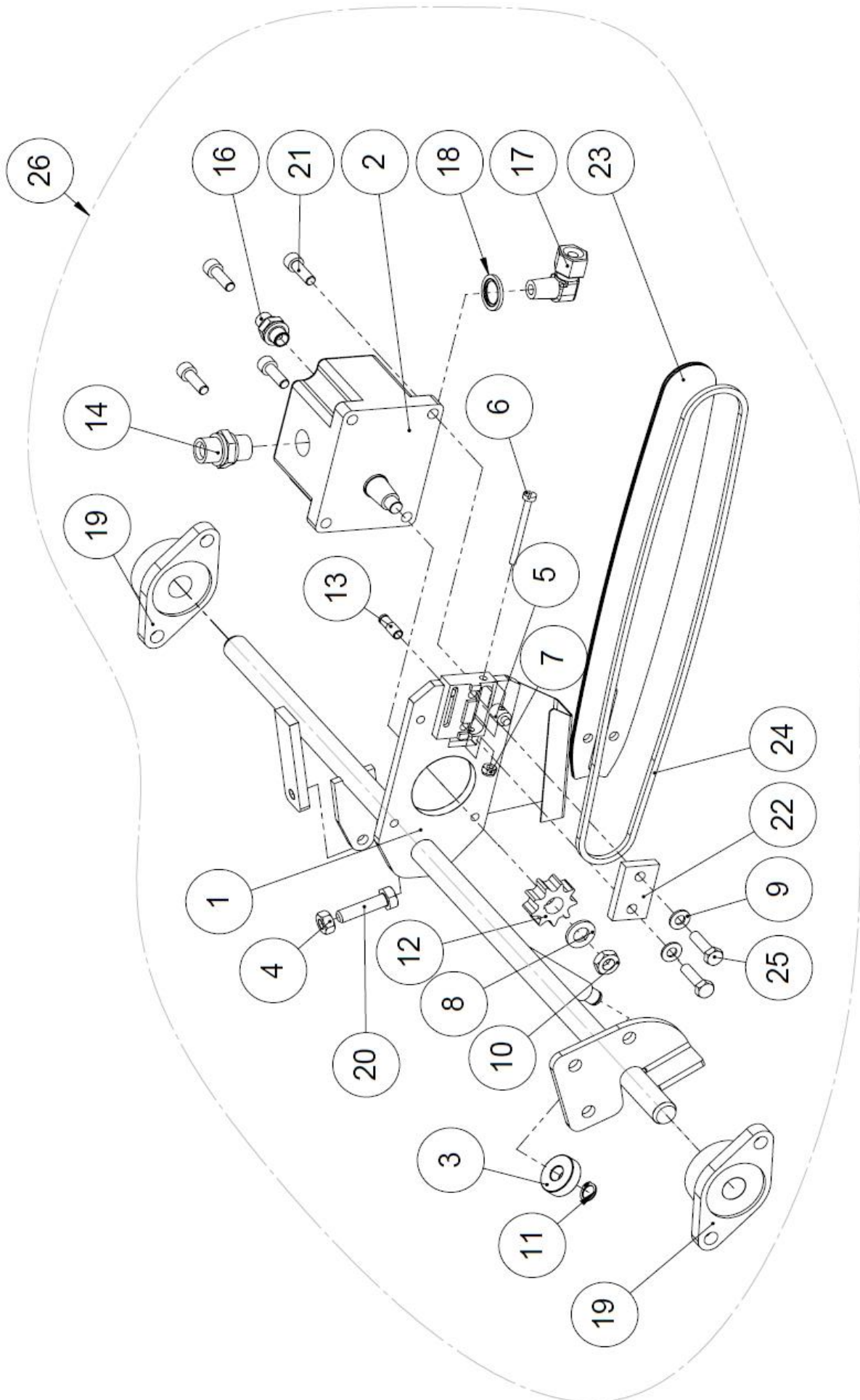
No.	Item	Part number	Standard/dimensions	Pcs
7	Extension roller, complete	10056		1
6	Adjustable rollers	10781		1
5	Cotter pin	96246	DIN 94/ 3,2x32	2
4	Washer	96053	DIN 125/A20	2
3	Keel roll	95001		2
1	Extension roller frame	10741		1

1.5 Upper roller for the conveyor



No.	Item	Part number	Standard/dimensions	Pcs
5	Upper roller for the conveyor	10132		1
4	Bearing 6205 2 rs	95050		2
3	Upper roller	50000211		1
2	Shaft for the upper roller	10132b	Ø25 L=360	1
1	Retaining ring	96042	DIN 471/25	2

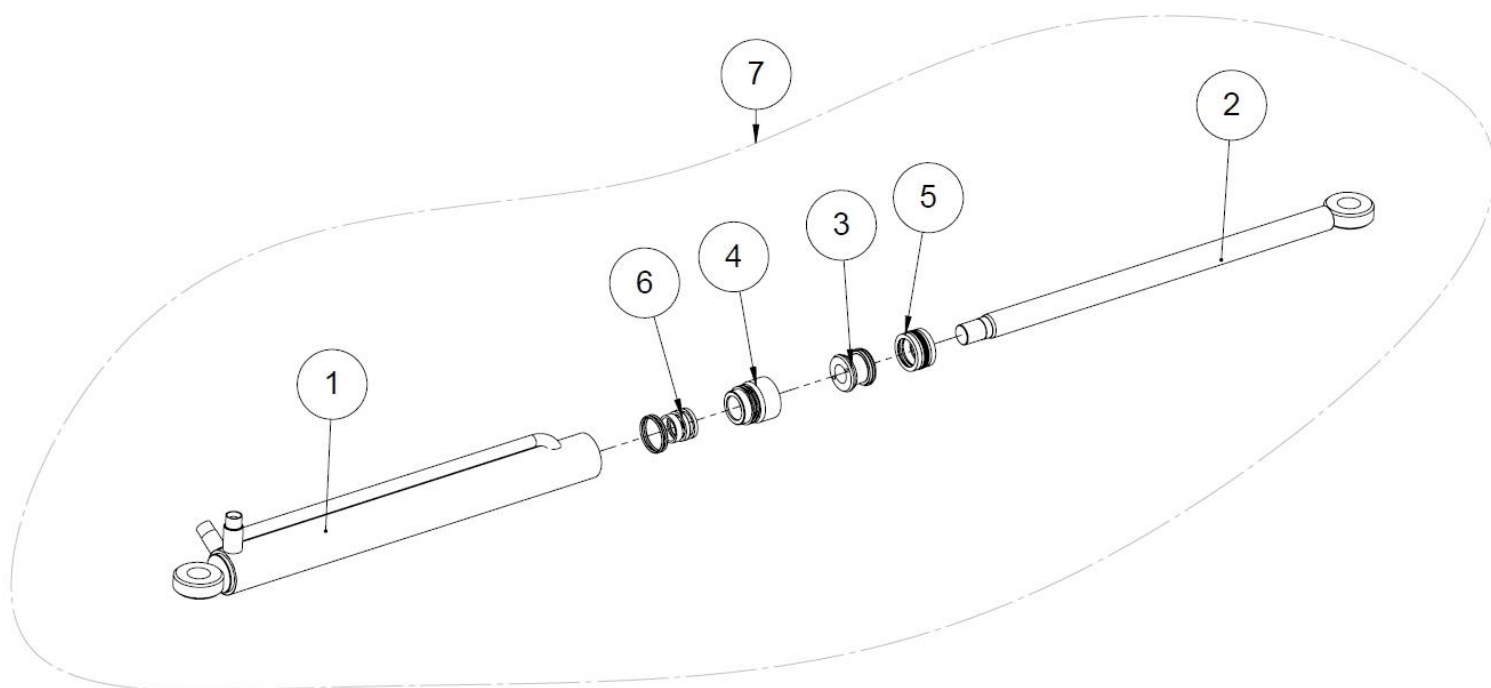
1.6 Saw drive head



1.7 *Parts list of the saw drive head*

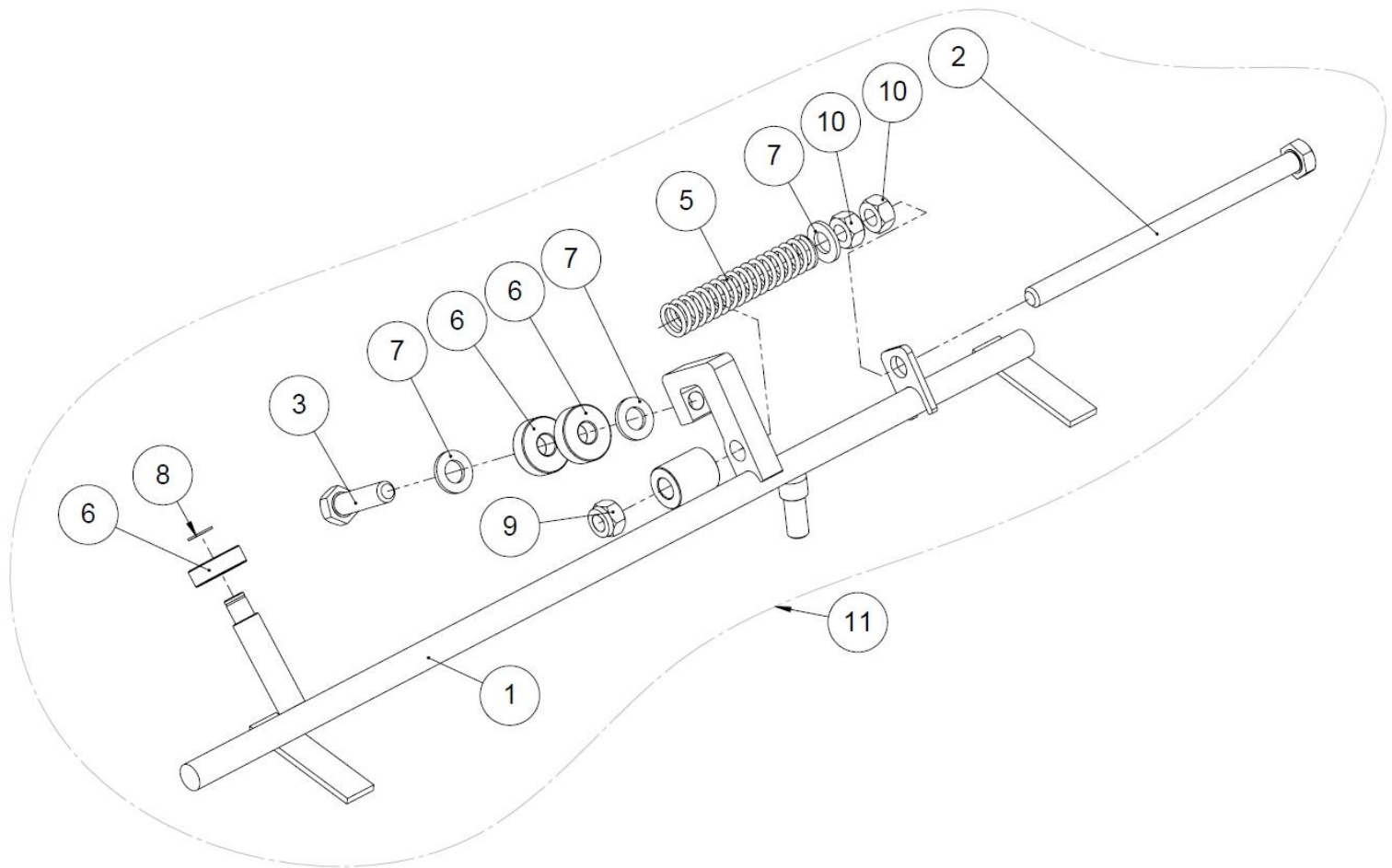
No.	Item	Part number	Standard/dimensions	Pcs
26	Drive head	50002201		1
25	Hex head screw	96165	DIN 933/M8x30	2
24	Saw chain 56 loops	95405		1
23	Saw bar 13" 1.3	95404		1
22	Saw bar fastener	50009665	PL8 30x50	1
21	Hex socket screw	96035	DIN 912/ M8x25	4
20	Hex head screw	96098	DIN 931/ M10x40	1
19	Collar step bearing unit	95604	FYTB 20 FM	2
18	USIT seal	97213	1,2	1
17	Directional corner nipple	97247	3,8	1
16	Double nipple, straight	97200	1.4 x 1.4	1
15	USIT seal	97211	1,4	1
14	Double nipple, straight	97204	1.2x1.2	1
13	Hose connector M8X1.25	50008178	Ø8x1 L=25	1
12	Drive wheel	50009473		1
11	Retaining ring	96380	DIN 471/12	1
10	Hex nut	96206	DIN 936/M12	1
9	Washer	96061	DIN 125/A8	2
8	Washer	96058	DIN 125/A12	1
7	Locking nut	96221	DIN 985/M6	1
6	Slothead screw	96266	DIN 84/M6x60	1
5	Tightening pin of the bar	10046	Ø12 L=18.5	1
4	Hex nut	96199	DIN 934/M10	1
3	Bearing 6201	95567		1
2	Saw motor	97823		1
1	Drive head frame	50005696		1

1.8 Splitting cylinder



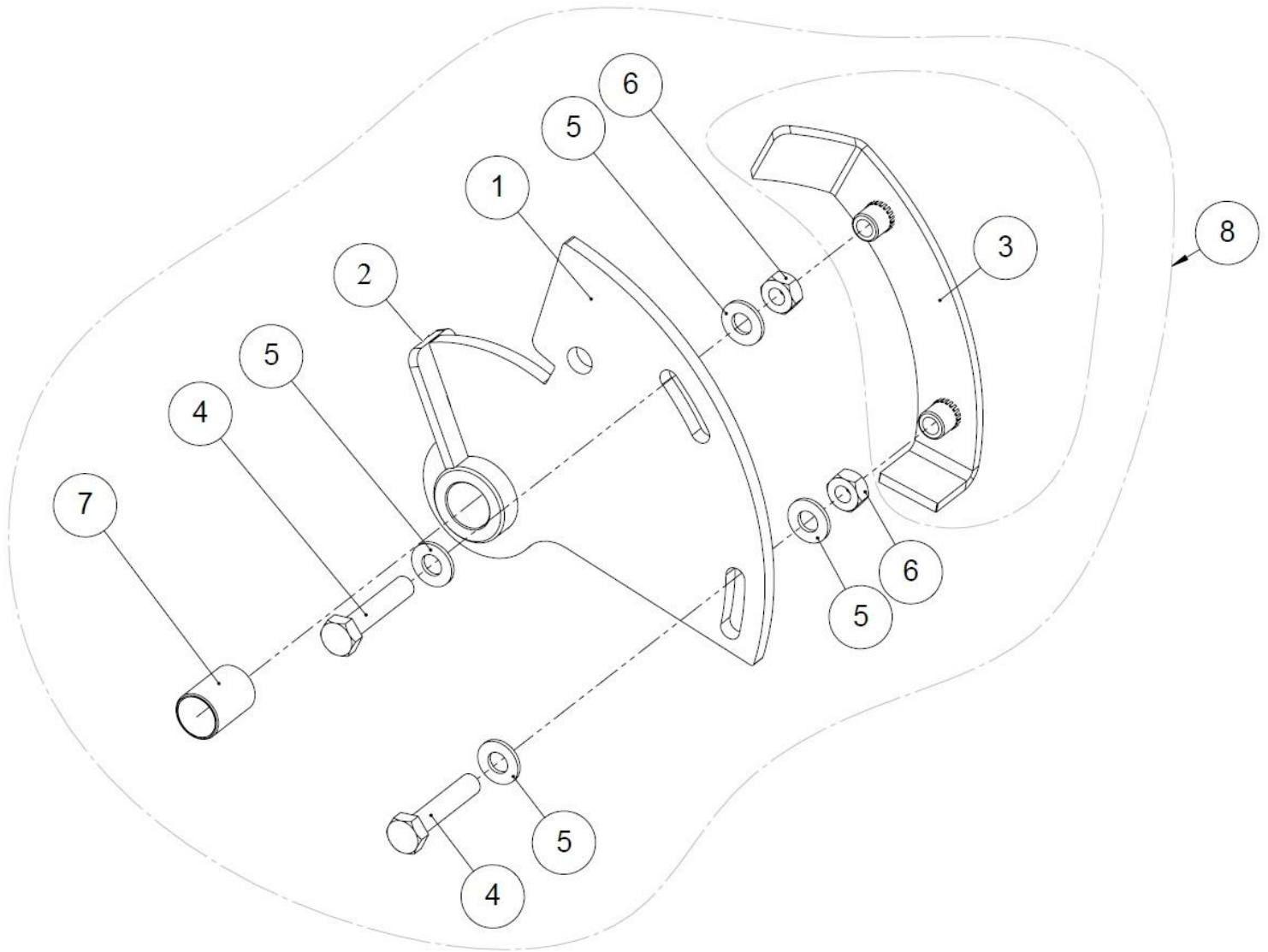
No.	Item	Part number	Standard/dimensions	Pcs
7	Cylinder	50002249	50/32 mm	1
6	Arm control seals	97294	50-32	1
5	Plunger seal kit	97294	50-32	1
4	Arm control	10261	Ø55 L=55	1
3	Plunger	10260	Ø50 L=40	1
2	Plunger rod	50002693		1
1	Cylinder pipe	50002691	D50/D60	1

1.9 Splitter rod



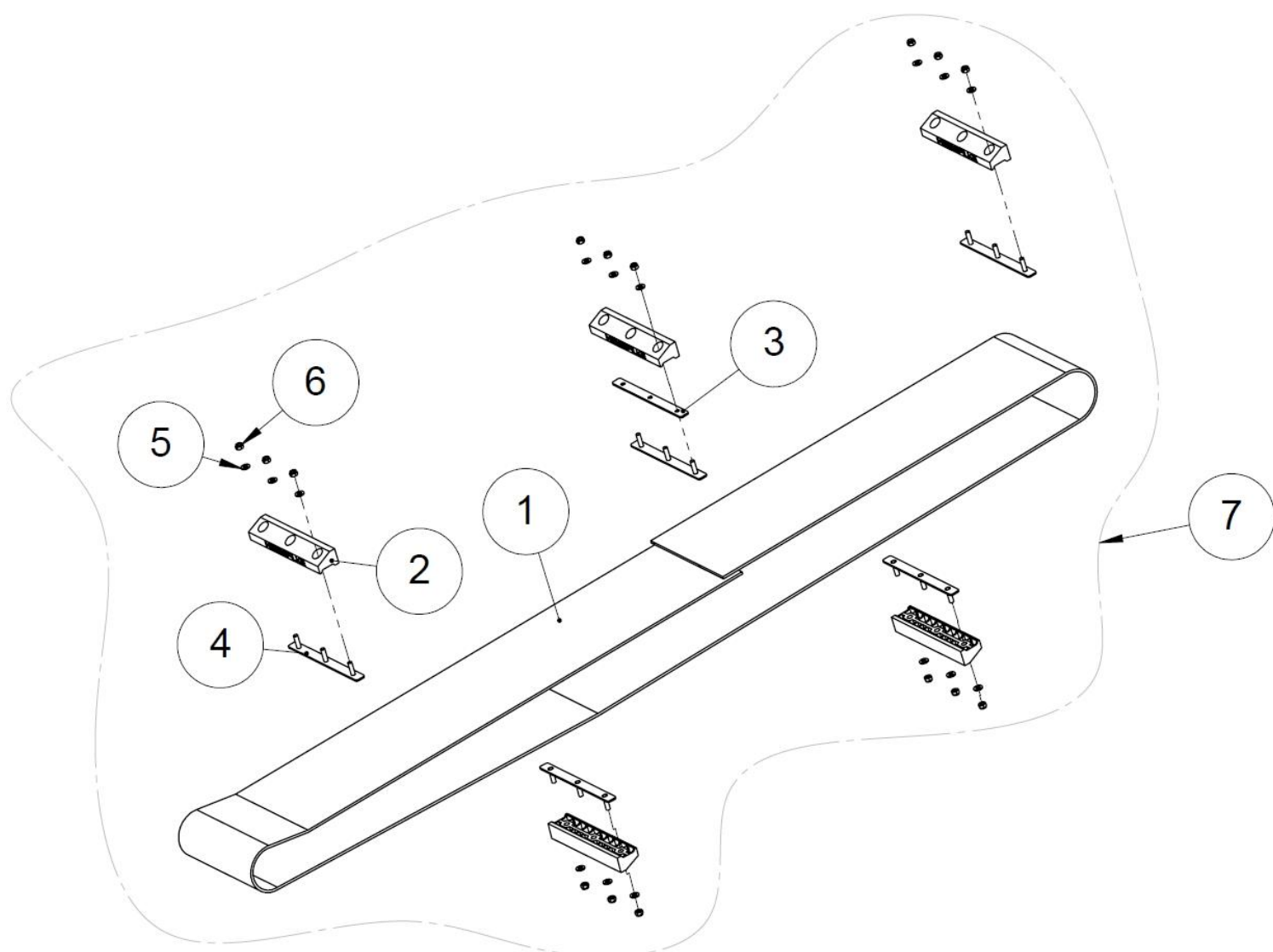
No.	Item	Part number	Standard/dimensions	Pcs
11	Splitter rod	50005283		1
10	Hex nut	96200	DIN 934/M12	2
9	Locking nut	96218	DIN 985/M12	1
8	Retaining ring	96380	DIN 471/12	1
7	Washer	96058	DIN 125/A12	3
6	Bearing 6201	95567		3
5	Pressure spring	95031	2.5x20x100	1
4	Gate	50002702	PL4 25x41	1
3	Hex head screw	96107	DIN 931/M12x45	1
2	Hex head screw	96331	DIN 931/M12x200	1
1	Splitter rod	50005648		1

1.10 Lock return mechanism



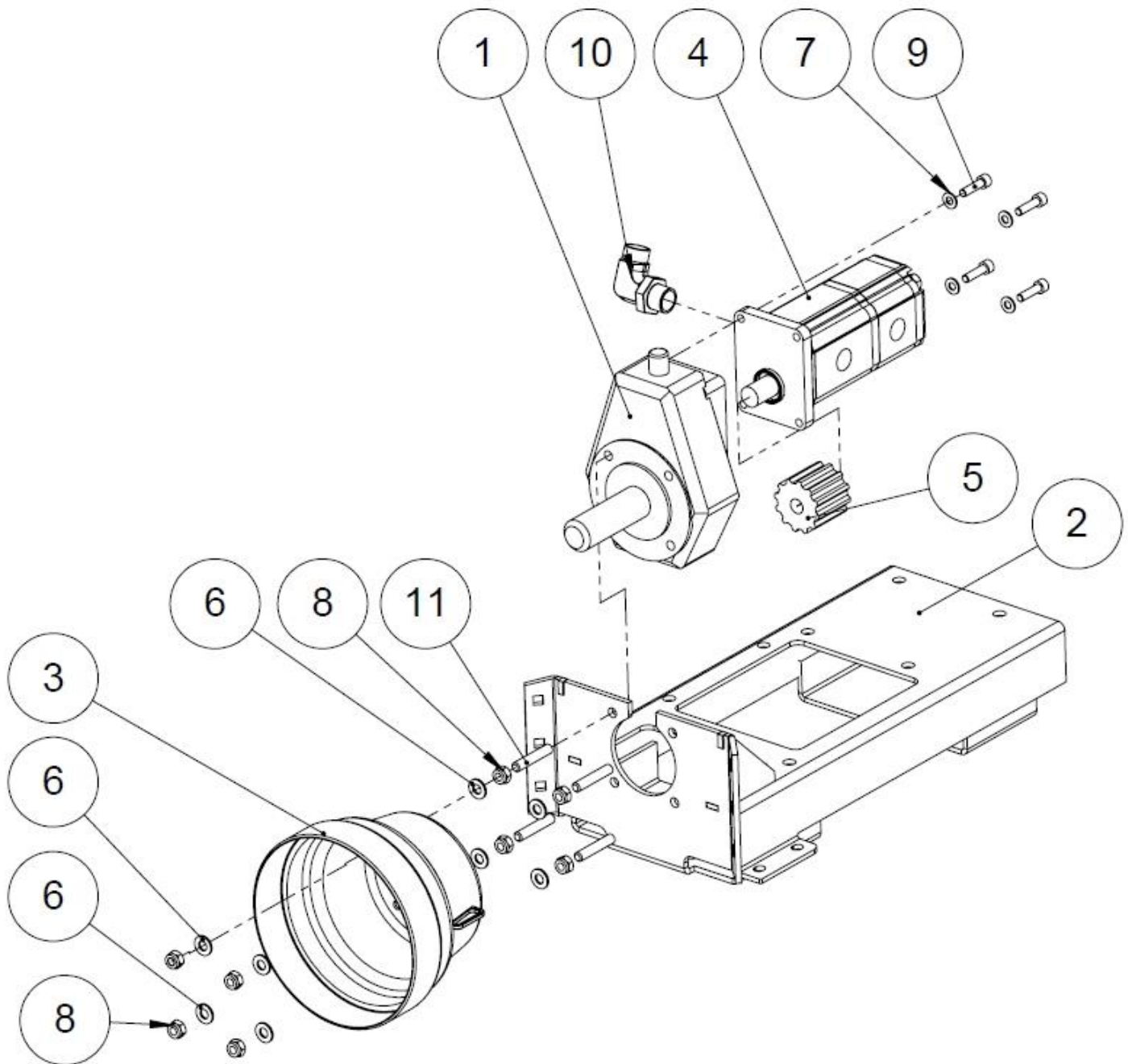
No.	Item	Part number	Standard/dimensions	Pcs
8	Lock return mechanism, complete	50005581		1
7	Slide bearing	95062		1
6	Hex nut	96196	DIN 934/M8	2
5	Washer	96061	DIN 125/A8	4
4	Hex head screw	96123	DIN 931/M8x40	2
3	Lock return mechanism	50008442		1
2	Spreader plate	50005570	PL4 25x45	1
1	Lock plate	50009526		1

1.11 Output conveyor belt



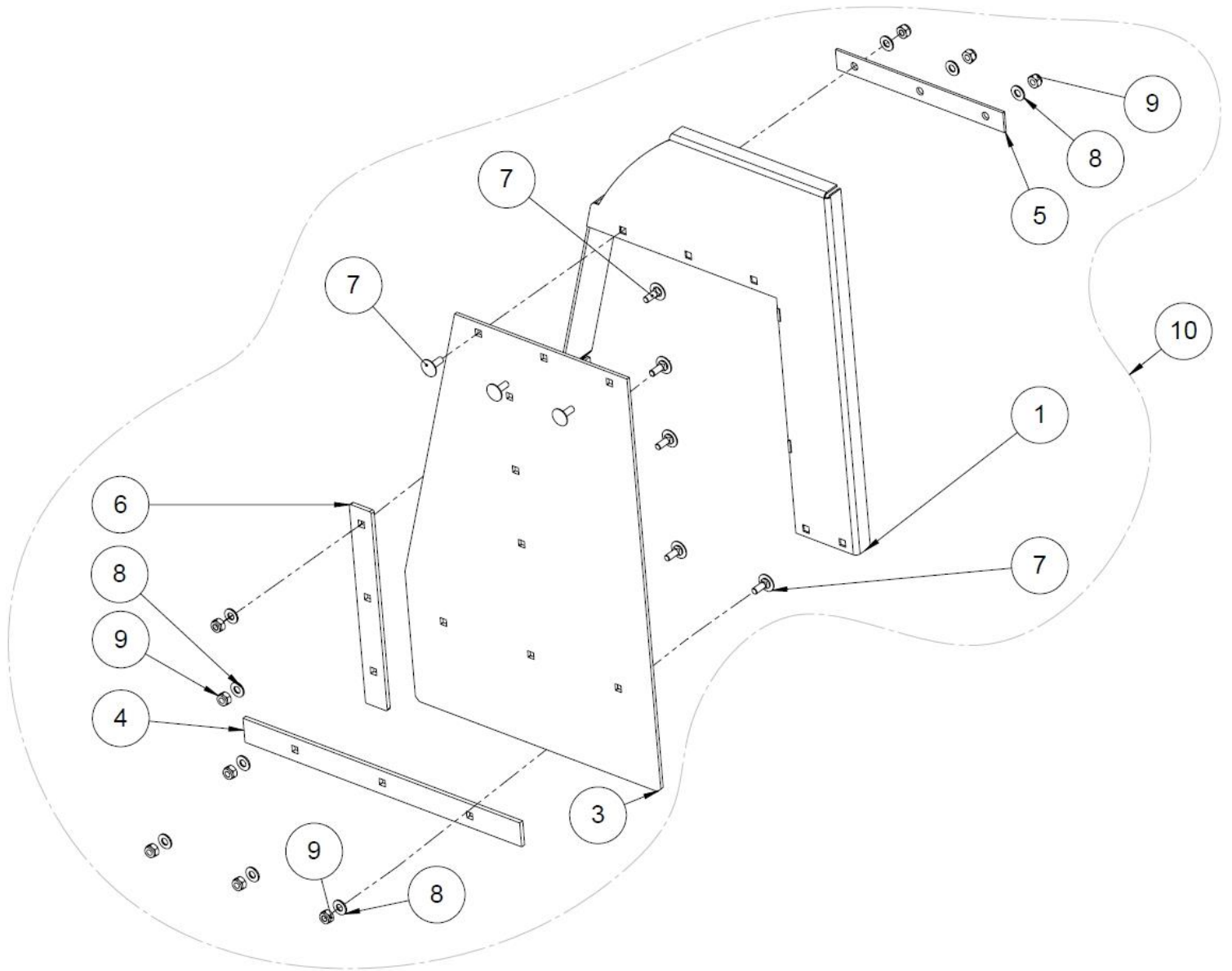
No.	Item	Part number	Standard/dimensions	Pcs
7	Belt, complete	50006552		1
6	Locking nut	96222	DIN 985/M8	15
5	Washer	96061	DIN 125/A8	15
4	Plate fastening	10863	M8x30	5
3	Plate reinforcement	50008967	PL3 20x230	1
2	Plastic plate	95548		5
1	Belt	50006551		1

1.12 Power transmission, TR model



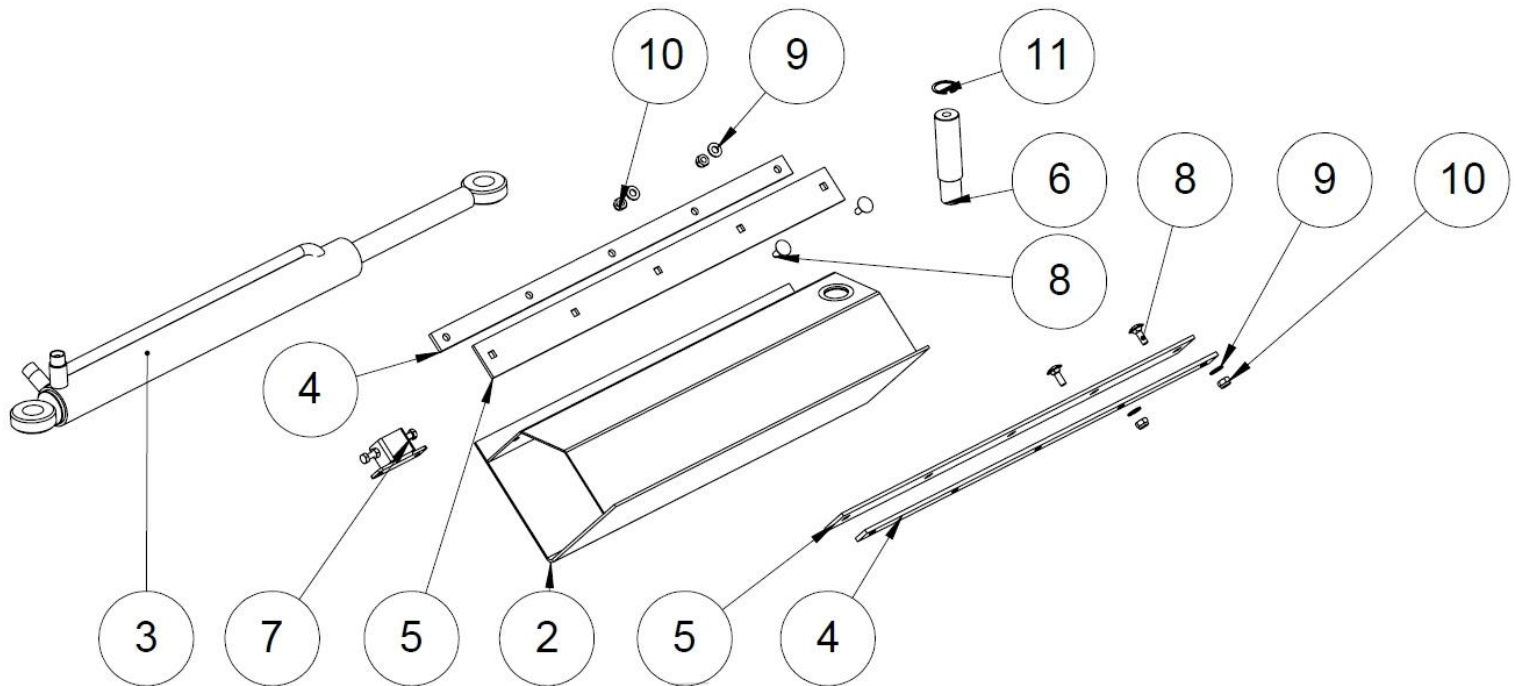
No.	Item	Part number	Standard/dimensions	Pcs
11	Threaded rod	96389	M10x55	4
10	Directional elbow	97721	¾" 90 °	1
9	Hex socket screw	96341	DIN 912/M8x30	4
8	Locking nut	96068	DIN 985/M10	8
7	Washer	96061	DIN 125/A8	4
6	Washer	96049	DIN 125/A10	8
5	Boron bushing	95612		1
4	Hydraulic pump (electric/TR model)	97324		1
3	Cardan shaft guard	95623		1
2	Drive triangle bed	50007301		1
1	Multiplier gearbox	95611		1

1.13 Front guard



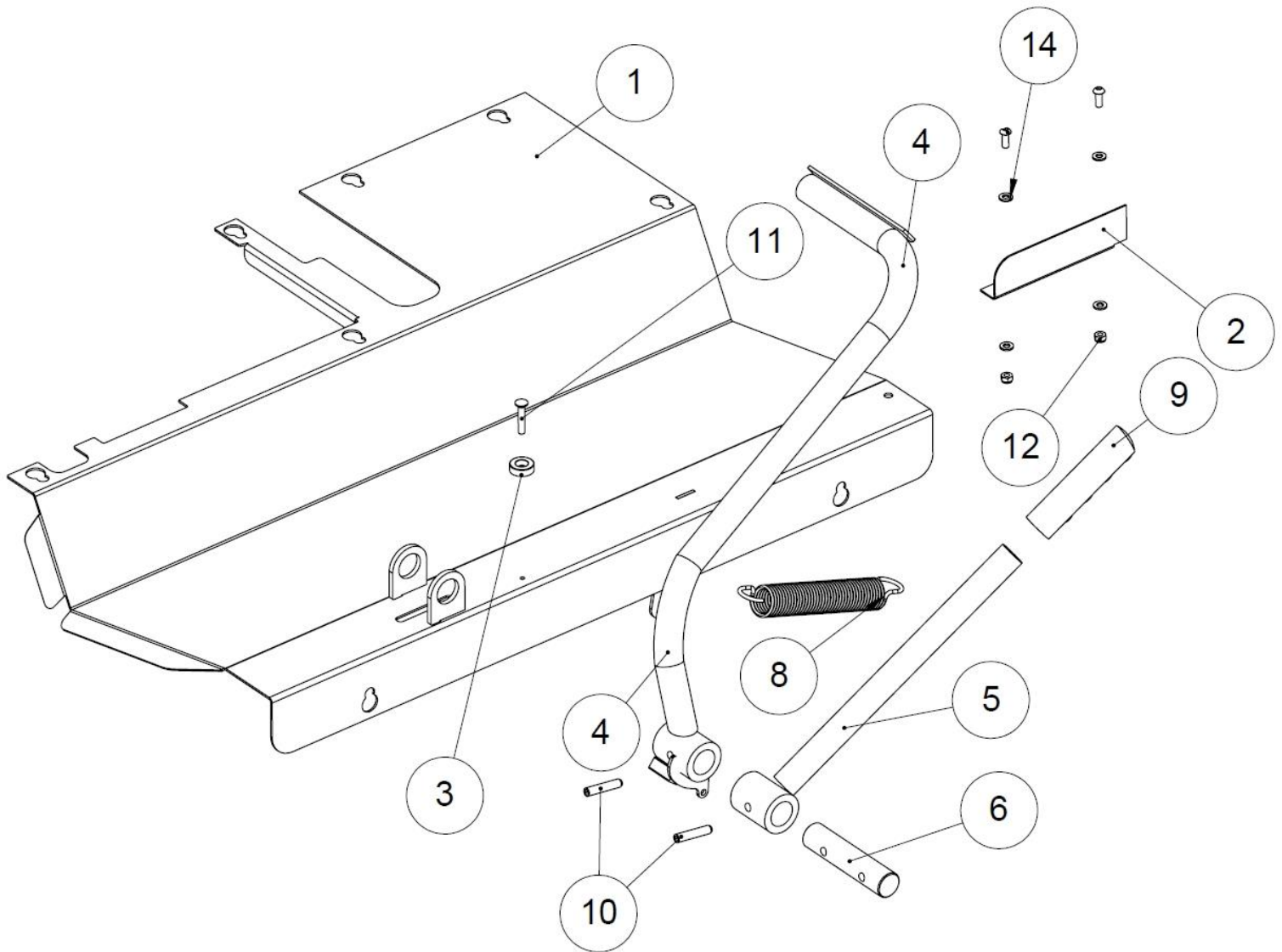
No.	Item	Part number	Standard/dimensions	Pcs
10	Front guard	50007973		1
9	Locking nut	96222	DIN 985/M8	9
8	Washer	96061	DIN 125/A8	9
7	Lock screw	96187	DIN 603/M8x20	9
6	Vertical rod for the protective mat	50009074	5x30 L=410	1
5	Upper fastening for the protective mat	50008920	PL3 25x230	1
4	Lower fastening for the protective mat	50008089	PL5 30x380	1
3	Protective mat for the splitting groove	50002103		1
2	Reinforcement	50006272		1
1	Guard	50006323		1

1.14 Splitting



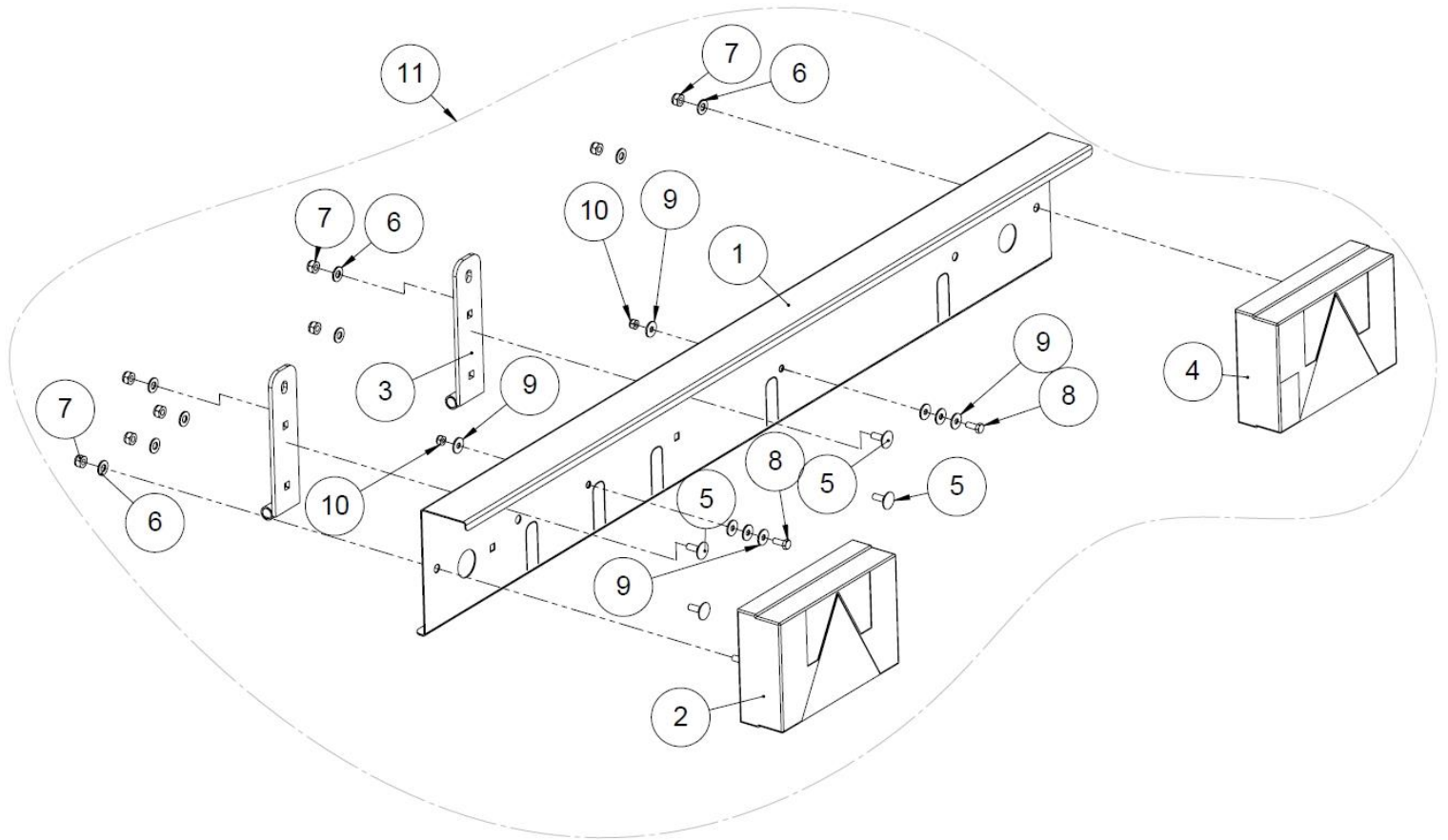
No.	Item	Part number	Standard/dimensions	Pcs
12	Frame	50009103		1
11	Retaining ring	96240	DIN 472/35	1
10	Locking nut	96068	DIN 985/M10	4
9	Washer	96049	DIN 125/A10	4
8	Lock screw	96186	DIN 603/M10x25	4
7	Reverser	50009228		1
6	Cylinder pin	50002476	Ø35 L=140	1
5	Upper slide support	50002426	PL5 55x700	2
4	Lower support piece	50002425	PL6 30x700	2
3	Cylinder	50002249	D60/50-486	1
2	Slide	50002222		1
1	Frame	50001993		1

1.15 Input table + wood gripper (50009166)



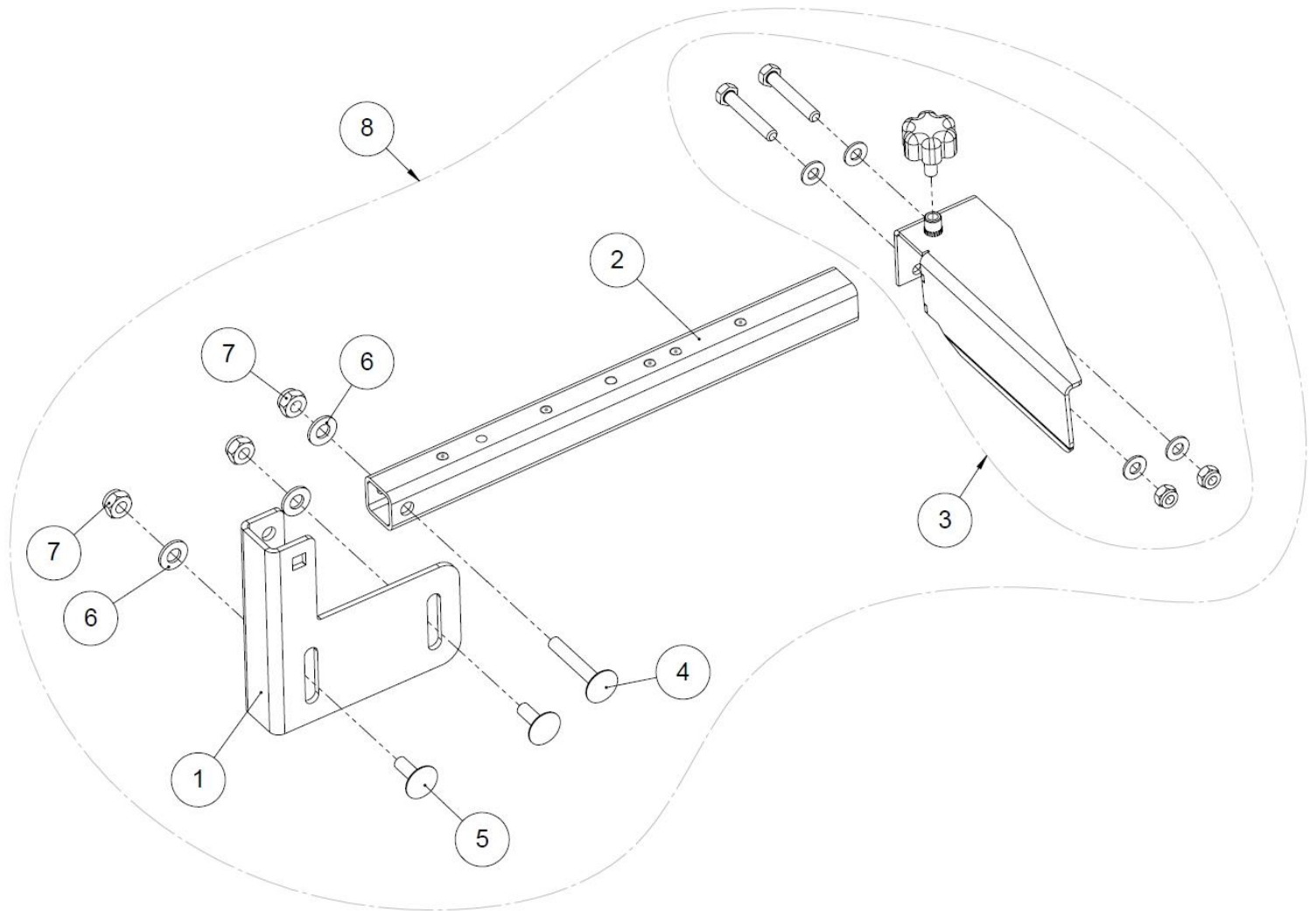
No.	Item	Part number	Standard/dimensions	Pcs
15	Input table	50009166		1
14	Washer	96060	DIN 125/A6	4
12	Locking nut	96221	DIN 985/M6	2
11	Hex socket screw, flush head	96386	M6x20	1
10	Spring pin	96077	DIN 1481/8x40	2
9	Handle	95595		1
8	Draw spring 3.5x30x190	95025		1
7	Spring fastener	50009499	S 355	1
6	Wood gripper shaft	50005337	Ø25 L=112	1
5	Wood gripper operating handle	50005376		1
4	Wood gripper	50005366		1
3	PVC button	95594		1
2	Guard	50005882		1
1	Input table	50006985		1

1.16 Rear light panel



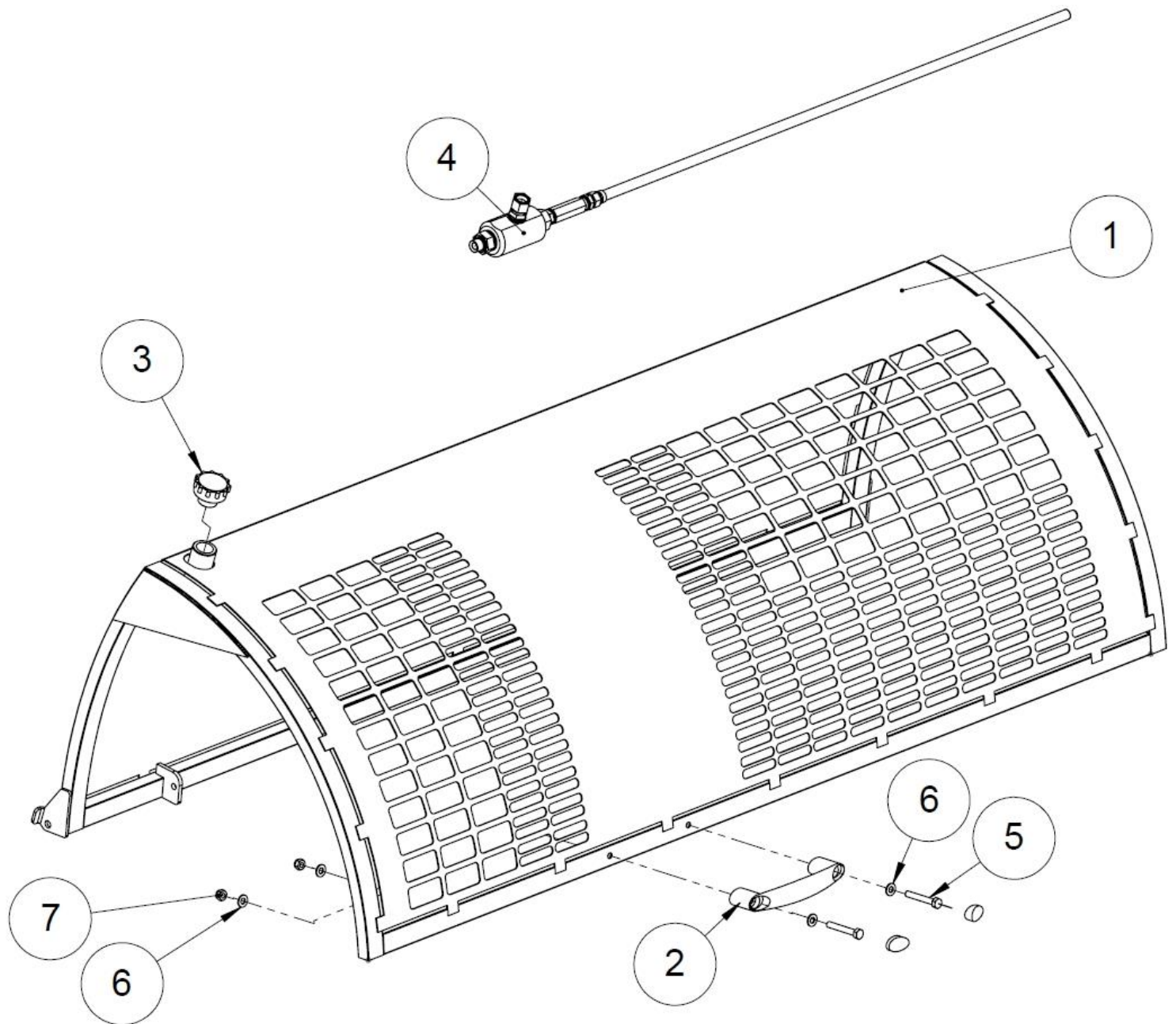
No.	Item	Part number	Standard/material	Pcs
11	Rear light panel	50009168		1
10	Locking nut	96221	DIN 985/M6	2
9	Washer	96084	DIN 9021/M6	8
8	Hex head screw	96157	DIN 933/M6x16	2
7	Locking nut	96222	DIN 985/M8	8
6	Washer	96061	DIN 125/A8	8
5	Lock screw	96187	DIN 603/M8x20	4
4	Rear light, right	95590		1
3	Light panel mount	50009162		2
2	Rear light, left	95579		1
1	Rear light plate	50002870	PL1.5 240x1170	1

1.17 Log length limiter



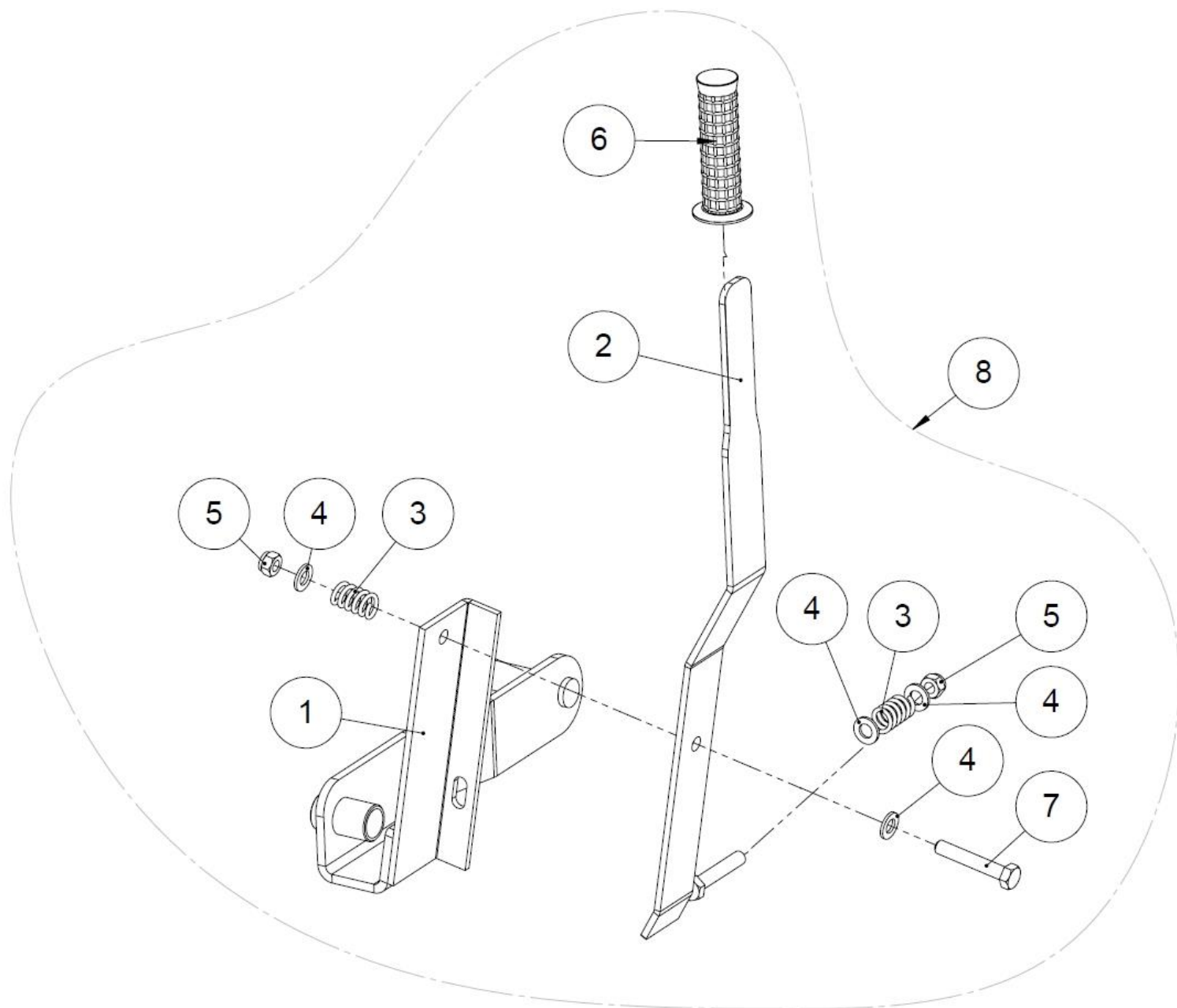
No.	Item	Part number	Standard/dimensions	Pcs
8	Log length limiter	50009169		1
7	Locking nut	96068	DIN 985/M10	3
6	Washer	96049	DIN 125/A10	3
5	Lock screw		2458/M10x25	2
4	Lock screw		2458/M10x55	1
3	Log stopper	50008597		1
2	Fastening pipe for the log stopper	50003435	30x30x3 L=360	1
1	Fastener	50004504		1

1.18 Protective cage (50009207)



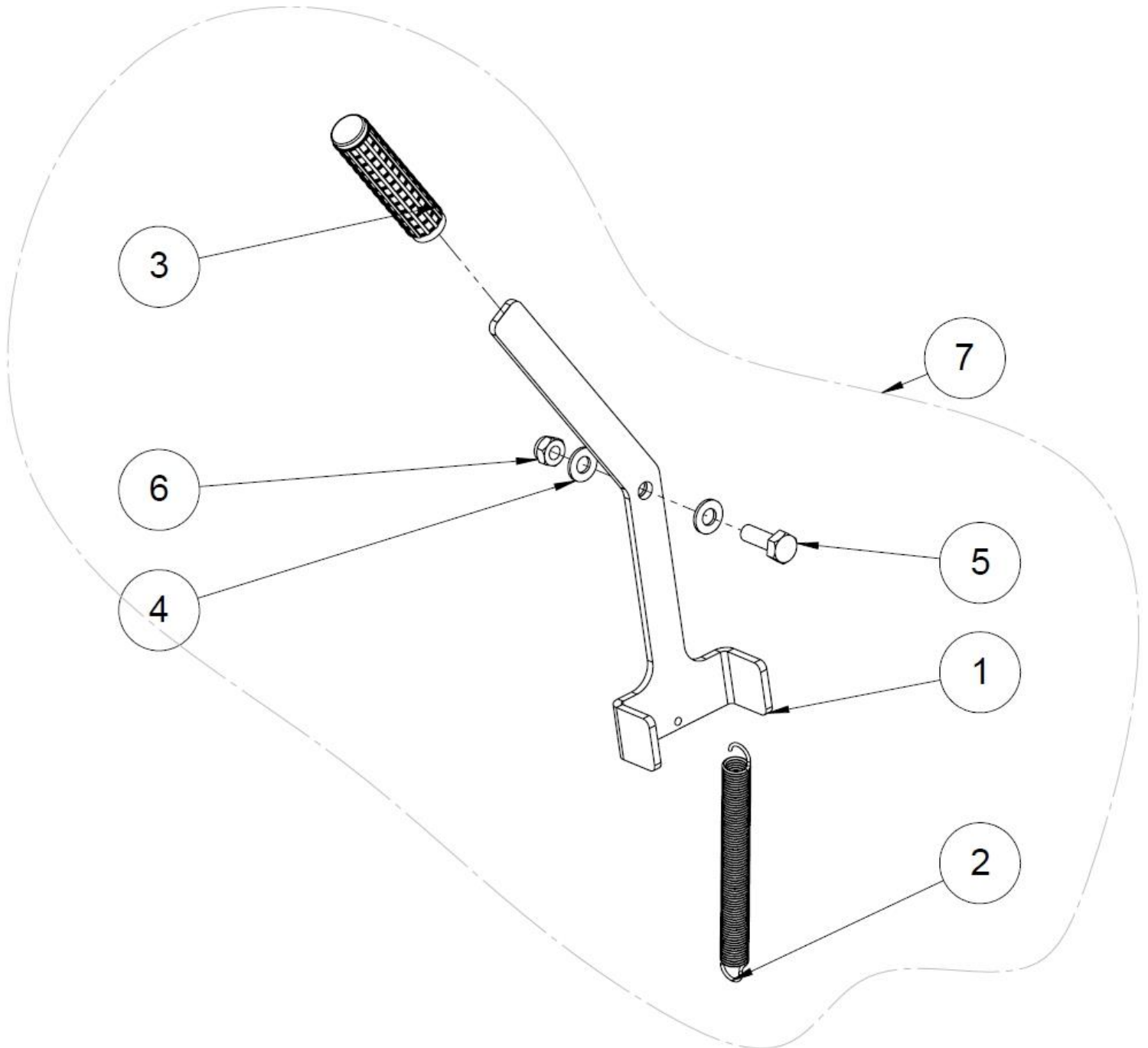
No.	Item	Part number	Standard/dimensions	Pcs
8	Protective cage	50009207		1
7	Locking nut	96222	DIN 985/M8	2
6	Washer	96061	DIN 125/A8	4
5	Hex head screw	96125	DIN 931/M8x55	2
4	Saw chain oil pump	47671		1
3	Oil cap	97582		1
2	Handle	50002766		1
1	Guard	50006078		1

1.19 Splitting knife adjuster



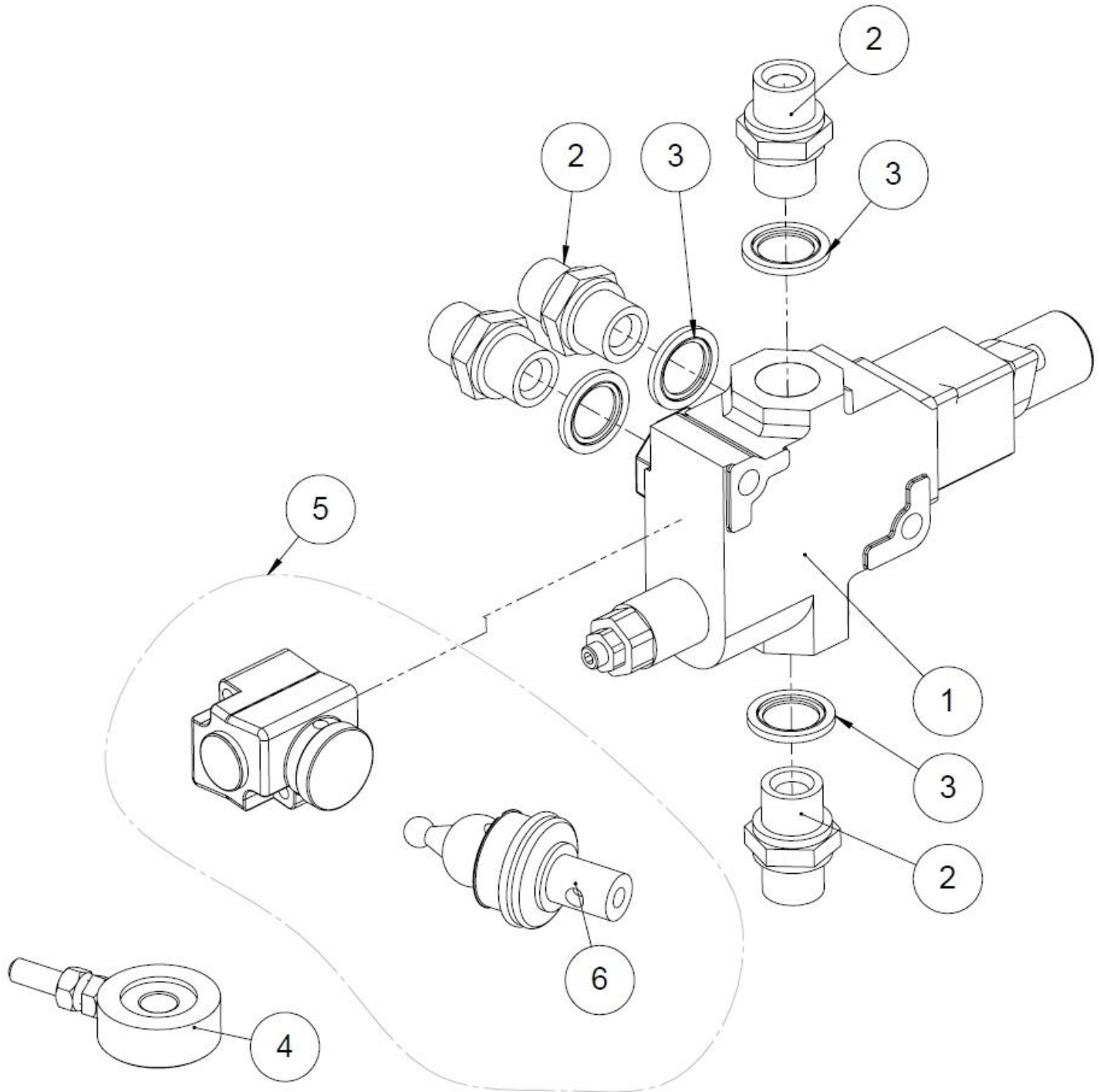
No.	Item	Part number	Standard/dimensions	Pcs
8	Splitting knife adjuster, complete	50009218		1
7	Hex head screw	96110	DIN 931/M12x70	1
6	Handle	95035	D28	1
5	Locking nut	96218	DIN 985/M12	2
4	Washer	96058	DIN 125/A12	4
3	Pressure spring	95008	3.5x22x38	2
2	Knife adjustment lever	50005159		1
1	Splitting knife adjuster	50005284		1

1.20 Splitter control lever



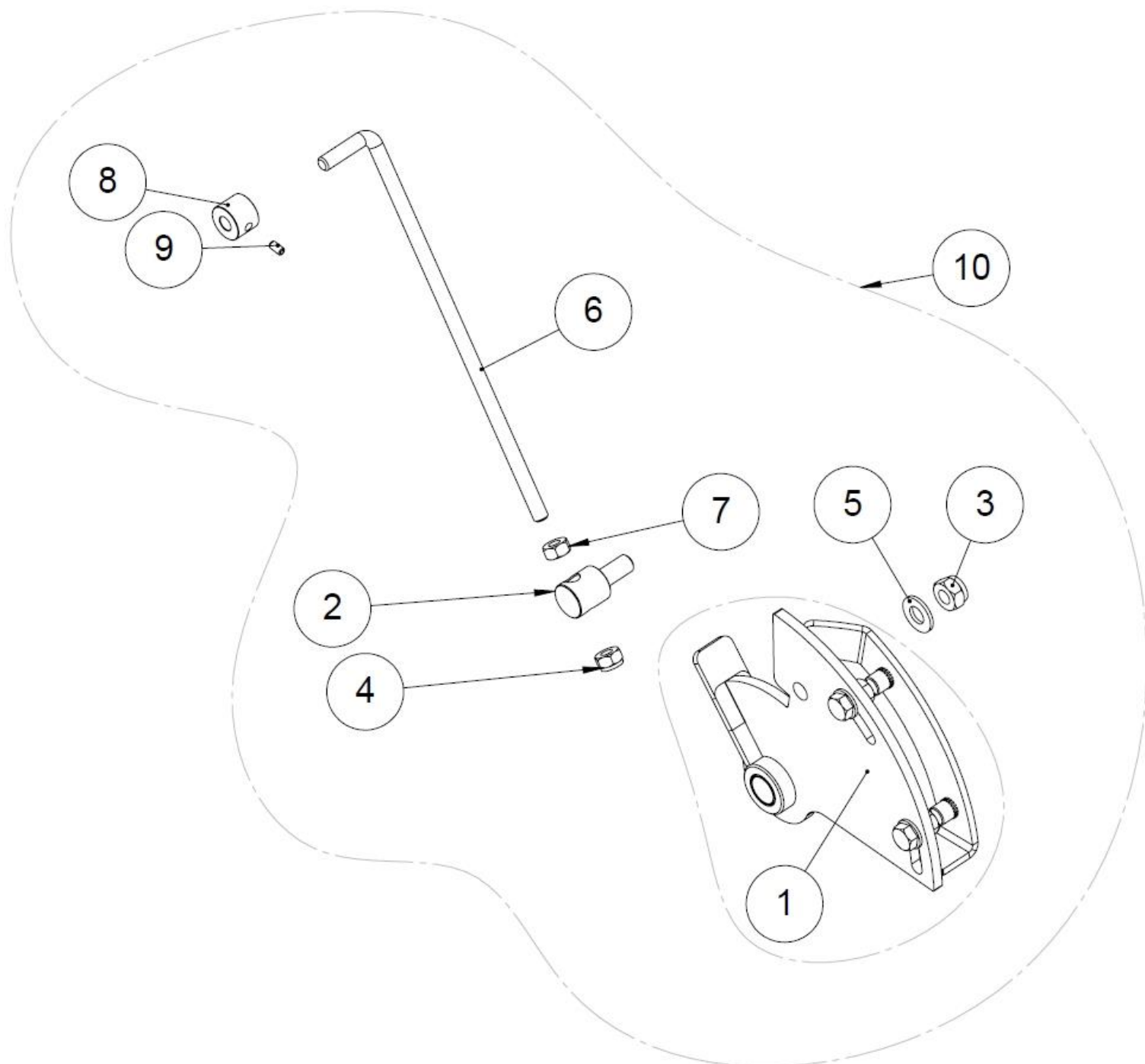
No.	Item	Part number	Standard/dimensions	Pcs
7	Reversing lever	50009231		1
6	Locking nut	96068	DIN 985/M10	1
5	Hex head screw	96140	DIN 933/M10x30	1
4	Washer	96049	DIN 125/A10	3
3	Handle	95034		1
2	Draw spring	95028	2x15x150	1
1	Reversing lever	50005289	PL5 171,7x321,6	1

1.21 Splitting valve (50009232)



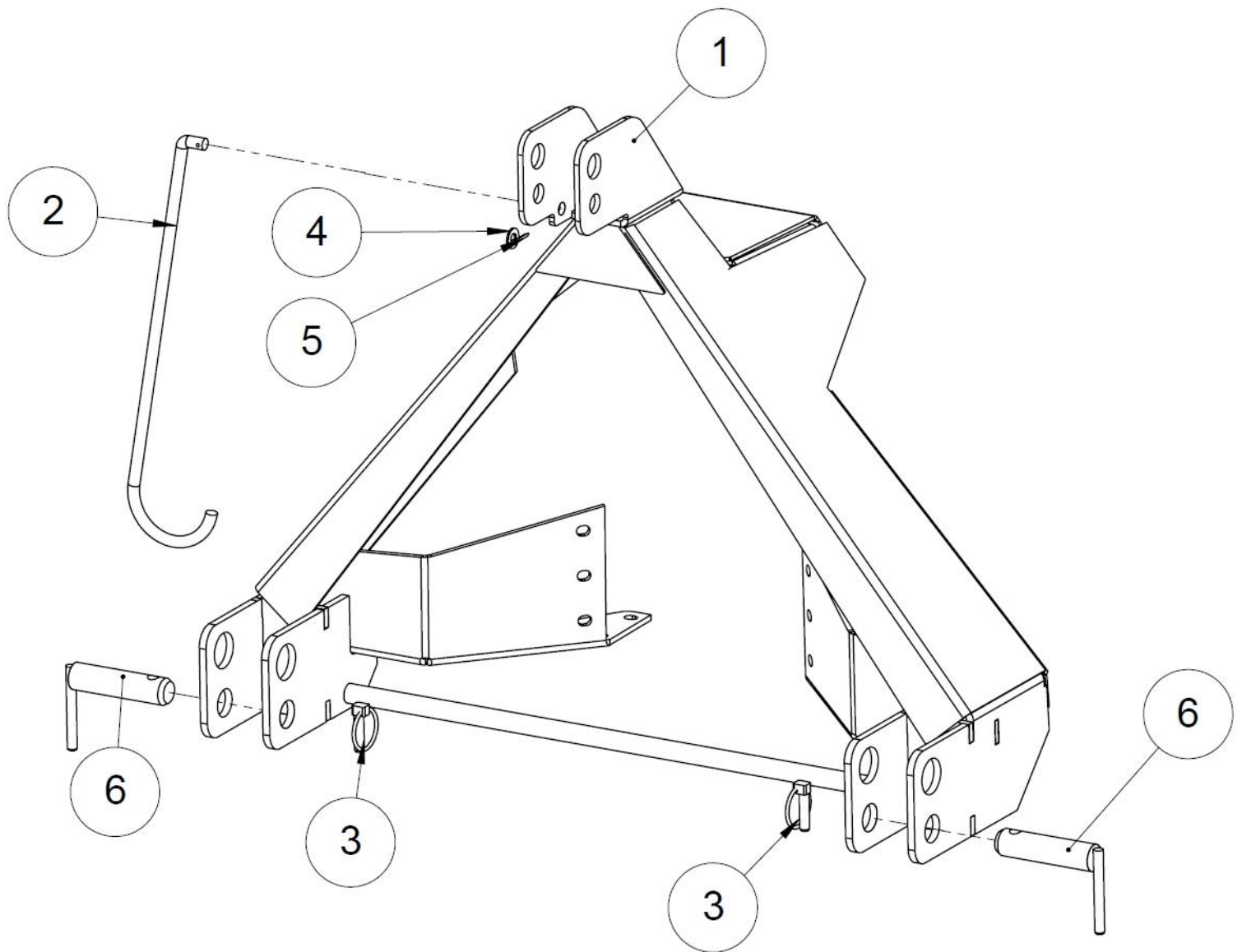
No.	Item	Part number	Standard/dimensions	Pcs
7	Splitting valve, complete	50009232		1
6	Ball joint	97354		1
5	Ball joint + rubber + housing	97353		1
4	Operating rod for the valve	50007552		1
3	USIT seal	97213	1/2"	4
2	Double nipple, straight	97204	1/2" x 1/2"	4
1	Splitting valve	97822		1

1.22 Lock return mechanism 2



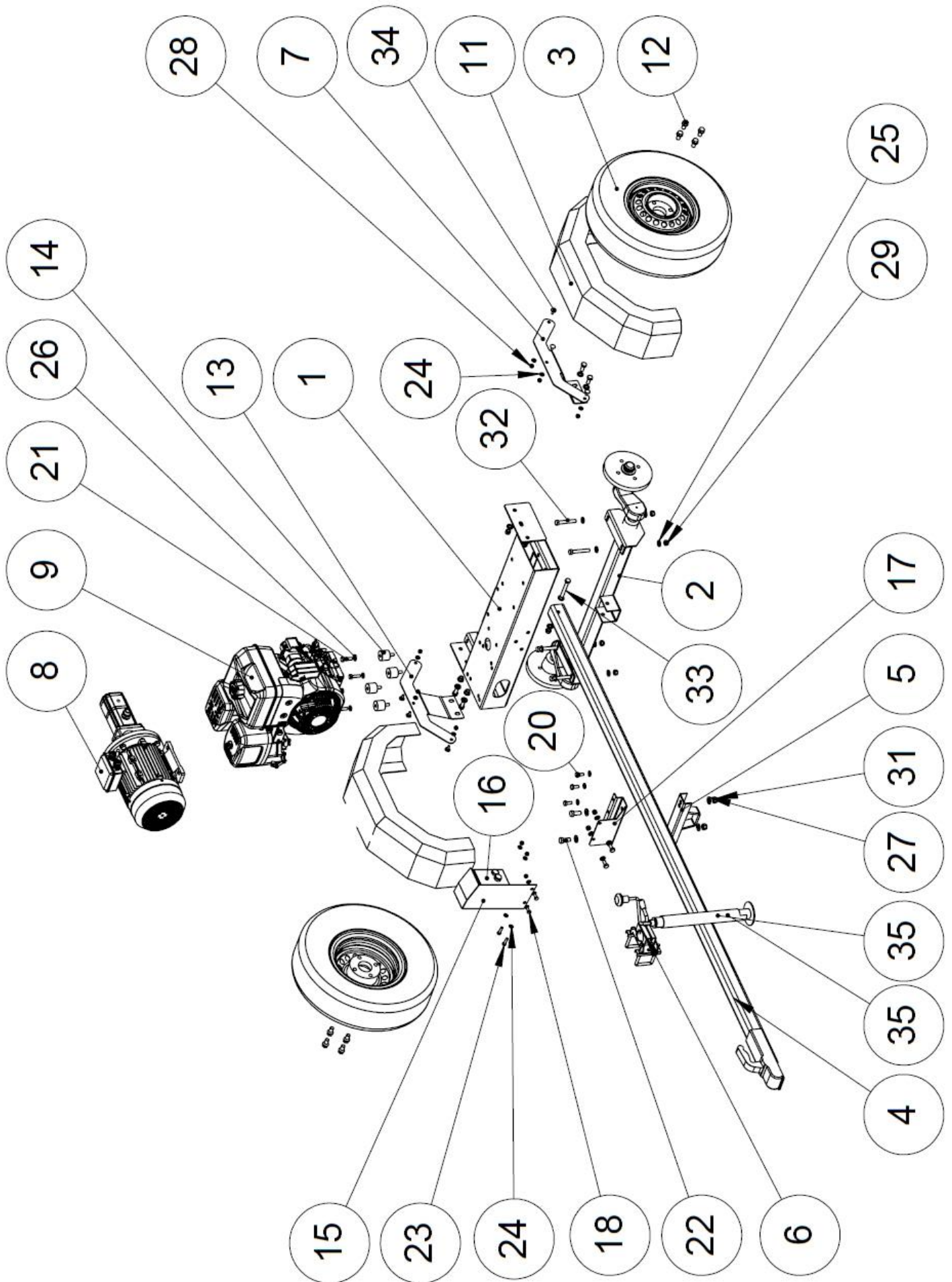
No.	Item	Part number	Standard/dimensions	Pcs
10	Lock return mechanism, complete	50009233		1
9	Clamping screw	96362	DIN 916/M6x8	1
8	Stopper	50009248		1
7	Hex nut	96196	DIN 934/M8	1
6	Safety rod	50005621		1
5	Washer	96049	DIN 125/A10	1
4	Locking nut	96222	DIN 985/M8	1
3	Locking nut	96068	DIN 985/M10	1
2	Joint nipple	50006075	Ø20 L=44	1
1	Lock return mechanism	50005581		1

1.23 Fastening triangle (50011333)



No.	Item	Part number	Standard/dimensions	Pcs
6	Draw pin	36033		2
5	Cotter pin	96245	DIN 94/3.2x20	1
4	Washer	96049	DIN 125/A10	1
3	Ring pin	96241		2
2	Cardan shaft hook	08055	Ø12 L=548	1
1	Fastening triangle	50009065		1

1.24 Chassis



No.	Item	Part number	Standard/dimensions	Pcs
35	Towing bar adjustment leg	95634		1
34	Lock screw	96187	DIN 603/M8x20	6
33	Hex head screw	96111	DIN 931/M12x90	1
32	Hex head screw	96376	DIN 931/M12x80	4
31	Locking nut	96211	DIN 985/M14	2
30	Locking nut	96068	DIN 985/M10	9
29	Locking nut	96218	DIN 985/M12	9
28	Locking nut	96222	DIN 985/M8	12
27	Washer	96051	DIN 125/A14	4
26	Washer	96049	DIN 125/A10	18
25	Washer	96058	DIN 125/A12	18
24	Washer	96061	DIN 125/A8	18
23	Hex head screw	96165	DIN 933/M8x30	2
22	Hex head screw	96152	DIN 933/M14x35	2
21	Hex head screw	96129	DIN 933/ M10x40	4
20	Hex head screw	96139	DIN 933/M10x25	5
19	Hex head screw	96146	DIN 933/M12x30	4
18	Hex head screw	96161	DIN 933/M8x20	4
17	Towing bar fastener	50004182	PL3	1
16	MS starter 4 kW	95151		1
15	Starter cover	50008147	PL1.5	1
14	Rubber pad/cylinder isolator	95603		4
13	Guard fastener	50002887	PL3	1
12	Wheel bolt, cone	95572		8
11	Mudguard	95575		2
10	Sawdust guide	50007593	PL1.5	1
9	Briggs & Stratton, 13 hp rope starter	98310		1
	Hydraulic pump, combustion engine model	97719		1
8	Electric motor assembly	50009631		1
7	Guard fastener	50005072	PL3	1
6	Nose wheel bar fastener	95630		1
5	Fastener 480 mm STC	95577		1
4	Pipe towing bar 750 kg	95597	60x60x4 L=2500	1
3	Wheel 155R 13C8	95574		2
2	Shaft	95596		1
1	Shaft fastening	50007041		1