

**35-SKL145**  
**VERGE FLAIL MOWER**  
**Light weight 1.45m**



**Kellfri**

Read this manual carefully  
before using the product!  
Translated from the original

## TABLE OF CONTENTS

Introduction	3
Product information	3
Safety instructions	4
Incase of emergencies	4
Surroundings	5
Environment	5
Safety training	6
After use	6
Maintenance and service	7
Transportation and setup	7
Recycling	7
Machines / tools connected to hydraulics	8
Power take off shaft (pto)	8
Chemicals	9
Risks and hazards during use of mowing machines	10
Drive safely on public roads	11
Warning labels	12
Service	13
Troubleshooting/ error	13
Gearbox	14
Belt adjustment	14
Machine assembly i	15
Machine assembly ii	16
Machine assembly iii	17
Instructions for cutting pto shaft	18
Drawing i	19
Drawing ii	20
Spare parts	22
Deviation request form	23
Warranty terms and condition	24

Kellfri designs and delivers efficient and affordable machines and components for forestry, agriculture, construction and gardening in Sweden and the rest of the Nordic region and Europe.

We recommend that you always read and follow the safety information and instructions in the machine's instruction manual.

We reserve the right for any typographical errors in text and images, as well as possible errors in the specification of all the instruction manual

## INTRODUCTION

Thank you for choosing a product from Kellfri AB. By following general safety information, operating instructions and common sense, you will have many years of enjoyable use of the product. Kellfris equipment and products are aimed to be use by active farmers with high demands on functionality.

## PRODUCT INFORMATION

Kellfris SKL145 is a mower made for the smaller tractors. The machine is regulated so that the work can be carried out alternatively behind the tractor or to the side, the hydraulic side shift is standard. The verge flail mower can be angled 90 ° upwards and 50 ° downwards, which makes it excellent for cutting edges, flat surfaces and hedges! Standard equipped with hammer strokes, support roller and power transmission shaft.

## INTENDED USE

The implement is intended to cut grass and chop brushwood. Clear the area from any objects such as stones, branches, etc. before starting the operation. The machine is a single operated machine. No one is allowed within the danger zone other than the operator during operation.

TECHNICAL INFORMATION	35-SKL145
Length x Width x Height	1650 mm x 1450 mm x 605 mm
Working width	1450 mm
Hydraulic	Requires 2 double acting hydraulic outlet
PTO	Standard
Side shifting	Yes
Power requirement	25-50 hp
Rpm	540 r/min
Operating speed	6-12 km/h
3-point Cat.	Cat.1
Weight	300 kg
Flail	24 pcs



## SAFETY INSTRUCTIONS

Before using the trailer, and for the safety of yourself and others, you must read the safety instructions and operating instructions and understand their contents. Always make the safety instructions and the operating instructions easily accessible to users of the equipment or product. It is a good idea to read the safety instructions from time to time, both for your own safety and that of others. It is important that the user understands that common sense and general caution are not built into the product, but must be supplied by the user.

If the operating instructions gets damaged or in any other way cannot be used, please contact and order a new one from: Your retailer or download from [manual.kellfri.co.uk](http://manual.kellfri.co.uk)

Do not use the equipment or product if you feel ill, tired or are under the influence of alcohol. Do not use the equipment or product if you are taking prescribed medication or drugs, or suffering from severe depression or mental illness. Always comply with general rules of the road and applicable rules stipulated by the Animal Welfare Act. People under the age of 15 and those suffering from mental illness are not allowed to use the equipment.



## Warning!

The original design of the product must not, under any circumstances, be modified without the approval of the manufacturer. Unauthorised modifications and/or accessories may cause life-threatening injuries or death to users and others.

*Kellfri disclaim any responsibility for self-made modifications, changes or alterations.*

## IN CASE OF EMERGENCIES

In case of an emergency please dial 112.

Keep cell phone or emergency phone available specially when working alone. First aid kit and fire extinguishers must be kept easily accesable during all work, maintenance and service.



## PERSONAL PROTECTION



Always use suitable protection equipment. Do not wear loose clothing or jewellery while working with the equipment. Long hair should be tied up when working with machine that has moving parts. Use protective gloves as there is a risk of burns if any hot surfaces are touched.



## SURROUNDINGS

Make sure your working area is clear from people, children and objects before installing and using the machine. Risk of serious injuries can occur during operation. Take an extra caution when children are in the area where the equipment/ product is being use or stored. Check the area for low hanging electrical wires. Be careful when working on slopes and near ditches. Always work alone with single - purpose tools/products. Never have junk lying in your area. Keep working areas clean. Always respect the risk zone.



## STEPS BEFORE USE

Read the safety information and instruction manual carefully. Be sure you understand the safety measures, instruction manual and warning labels. Use common sense when operating the machine and use appropriate personal protective equipment.

Always check the performance and the machine combination that are used. It's highly important these matches in a satisfactory manner. This is to ensure the product or the function and most important yours and others safety. Do visual inspection of equipment or product before use. Fix or replace damaged or worn parts immediately to reduce the risk of injury. Lubricate moving parts and check that all screw-nuts and bolts are tightened.

Learn and remember the correct working methods. Beginners should always keep a low speed, use extreme caution before routine and product knowledge is achieved. The user/customer is responsible to handle the situation correctly. The product should not be taken into use unless it can be done in a safe way for the user.

Read the tractor's manual before connecting equipment.

- Check and tighten all nuts and bolts!
- Check the oil level in the gear box, fill as necessary.
- Check V-belt tension and adjust if necessary.
- Check that the flails are not defective, replace if necessary.
- **IMPORTANT!** Always check lubrication oil level in the shaft before performing any operation!

The user / customer is responsible for handling the situation. If you experience that the machine is not safe to use, the machine must not be used until it is properly checked and insured it is working properly.

## ENVIRONMENT

Disposal of oil and other waste



- Improper disposal of oil or other waste can damage the environment.
- When the machine is emptied of oil, it must be poured into a dense container special made for oil. It is not allowed to store oil in a container that is being used for food or drink, to avoid the oil being consumed by mistake by others and cause serious injuries.
- It is forbidden to spill the oil on the ground or empty it into drains or somewhere that leads to a water source.
- Discarded oil, fuel, coolant, brake fluid, filter or battery must not be thrown or disposed just anywhere. Contact your municipal-ity for further information.

## SAFETY TRAINING

Safety is a primary concern in the design and manufacture of our products. Unfortunately, our efforts to provide safe equipment can be wiped out by a single careless act of an operator or bystander. In addition to the design and configuration of equipment, hazard control and accident prevention are dependent upon the awareness, concern, prudence and proper training of personnel involved in the operation, transport, maintenance and storage of this equipment. It is the operator's responsibility to read and understand ALL Safety and Using instructions in the manual and to follow these. Accidents can be avoided.

Working with unfamiliar equipment can lead to careless injuries. Read this manual before assembly or using, to acquaint yourself with the machine. If this machine is used by any person other than yourself, or is loaned or rented, it is the machine owner's responsibility to make certain that the operator, prior to using:

**a.** Read and understand the operator's manuals.

**b.** Is instructed in safe and proper use.



## Warning!

Never use a equipment or product with defect safety equipment.

**Warning labels identify important safety aspects in this manual to help you and others avoid hazards and accidents. When using the machine: Take extreme caution!**



**DANGER!**

This symbol indicates that a serious accident will occur if the instructions in the manual are not followed. The accident leads to serious injury, possibly death or serious property damage.



**WARNING!**

This symbol indicates that an accident will occur if the instructions in the manual are not followed. The accident leading to serious injury or property damage.



**CAREFUL!**

This symbol indicates that an accident may occur if the regulations are not followed. The accident results in personal injury or property damage.

**N.B!**

N.B! indicates the potential of failure if the regulation is not followed.

*When using the machine at a company, the employer is responsible that the user of the machine has theoretical and practical knowledge of the machine and that the work is carried out in a safe manner.*

## AFTER USE

- When disconnecting the machine/unit, use support legs or mechanical locks if necessary
- Make sure the machine/ unit is parked on a flat surface when disconnecting.
- If the machine/unit is to be parked on an inclined surface, use suitable brake blocks and make sure it cannot roll or tipp over
- Before disconnecting the hydraulic hoses, make sure there is no pressure left in the system.
- To prolong the life of your machine, do not leave it uncovered outside. Store underneath a cover preferably underneath a roof.
- Clean the machine - flush with water if needed.

## MAINTENANCE AND SERVICE

Make sure the machine is stable and does not risk falling over when performing maintenance and service. Replace damaged and worn parts immediately to reduce the risk of injury. Perform maintenance, service and checks as recommended. Use only spare parts with equivalent performance to reduce the risk of damage and damage.

- Regularly check the condition of the product/machine. Tighten bolts and nuts as needed. If cracks, twisting, bending, gaps or fatigue are detected, stop the operation and rectify the errors. Avoid using the product/ machine at temperatures below -20 ° C and higher than + 30 ° C.
- After changing parts, such as wheels, bearing, etc. check that the nuts or bolts are tightened. Check and retighten after a few hours of operation.
- Lubricate all lubricating points regularly.
- Never weld on the towing eye or other parts of the machine that can affect or alter the material's strength.
- Always double check that all bolts and nuts are tightened after maintenance and service.
- Machines with gearbox or hydraulic system - It is very important to check the oil level regularly!

**IMPORTANT! Check the oil level (gearbox / engine oil) and lubricate lubrication points regularly!**

**IMPORTANT!** Avoid lubricating too much. Dirt gathers easily on excess grease which increases wear. After lubrication, wipe off excess grease from couplings.

Kellfri AB is constantly working to further develop their products and therefore reserves the right to make changes regarding, among other things, design and appearance without prior notice.

## TRANSPORTATION AND SETUP

- Make sure that the area is free from people, children and objects before transport.
- Be extra cautious during transportation and movement and ensure that the machine / product is well anchored and existing transport locks or pins are mounted.
- Always place the load as low as possible. All cargo that sticks out should be securely anchored.
- Respect the danger zones even during transport.
- When lifting a machine or heavy parts, no one is allowed to be underneath suspended load.
- Trailer used for transportation should have functioning brakes.
- When traveling on a public road, the SMV sign must be affixed.
- Check tire pressure, see info on tire sides. Do not exceed the maximum pressure!
- Always keep the appliance or product in a dry place, preferably under cover when not in use.
- Make sure that the machine or product is standing stable and does not give the risk of overturning.
- Never allow children to play at the storage area. Keep in mind the risk of crushing



## RECYCLING

When disposing, the machine must be disassembled and transported to the intended location of the municipality. Contact your municipality for further information.



## MACHINES / TOOLS CONNECTED TO HYDRAULICS

Be careful when connecting your machine or implement to a hydraulic hose.



### DANGER!

Leaking oil or fuel under pressure can penetrate the skin and can cause serious injury. Do not use your hands when searching for leaks. Use a piece of cardboard or paper when searching for leaks.

- Warning of high pressure, risk of serious injuries.
- Before the repair or maintenance is carried out, the system must be relieved from any pressure that may remain in the system.
- Turn off the tractor and move all control levers in all directions to release pressure that remains in oil hoses and pipes before starting any work on these or on the hydraulic cylinders.
- Clean the filter in the inlet line after 10 hours of work.
- Immediately replace hydraulic hoses if cracks or wear occur or detected.
- Do not adjust valve settings. Incorrect adjustment can result in damage to the machine and / or injuries.
- The hydraulic system may only be operated with hydraulic oil intended for the purpose. Check the oil level before starting the machine!
- It is recommended that the hydraulic oil be changed after the first 10 hours of operation when using a new machine for the first time to remove any dirt or metal chips that may have entered the hydraulic system.

*NOTE! The oil becomes hot as it flows through the hydraulic system. Regularly check the oil temperature to avoid overheating. If the oil gets overheated, stop the machine and let the oil cool.*



### POWER TAKE OFF SHAFT (PTO)



Warning! Rotating PTO  
Warning! Risk of crushing!

What to consider when operating machine with PTO

The transmission to the gearbox is protected by both PTO shaft and the shear bolt.

All guards must be correctly mounted and in good condition. If the guards condition is poor or worn, they should be replaced before the machine is used.



**Danger!**

If the PTO shaft is not properly protected, it may cause death as it may catch parts of the body or clothing and cause life-threatening injuries.

Ensure that the safety chain is properly anchored to the PTO shaft and that the PTO shaft is protected over its entire length. Ensure that the PTO spins easily inside the protective tube. Keep splines grooves clean and well lubricated so that the PTO shaft can be easily connected. Read the PTO's instruction manual for adjustment and how to use it.



Never overload the PTO! Do not exceed the maximum allowed speed!



## CHEMICALS

It is important to regularly perform maintenance and not the least preventative maintenance on your machine to prolong your machine's life as long as possible. Cleaning your machine, applying grease and or making an oil changed helps to extend machine's life to a great extent. Read the instruction manual carefully for your new product / equipment and follow the maintenance and service interval.

## GREASE

First aid measures incase of:

**Inhalation** - Move the injured person where she/he can get fresh air in case of accidental inhalation of vapors.

**Skin contact** - Wash with soap and water. Contact a doctor if eczema or skin problems persist.

**Eye Contact** - Remove any contact lenses before rinsing. Rinse thoroughly with plenty of water, even under the eyelids. Contact a doctor if symptoms persist.

**Ingestion** - DO NOT induce vomiting. Drink water in small quantities. In case of ingestion or discomfort, contact the Poison Information Center or doctor immediately

**HAND PROTECTION** - Wear protective gloves.

**EYE PROTECTION** - Always wear approved goggles to avoid eye injuries.

**BODY PROTECTION** - Suitable protective clothing must be always used.

**RESPIRATORY PROTECTION** - No protection required during normal machining.

Grease should be keep well-sealed in a cool place in a well-ventilated area. Storage temperature must not exceed 45 ° C. Keep away from heat, flames and sparks. Materials such as steel, plastics, oils, grease etc. their function / strength deteriorates greatly at very low temperatures (-20 -30 degrees Celsius)



Chemicals should be kept out of reach of children and animals.

## DEGREASING

To ensure the best lubrication effect, cleaning parts of the machine thoroughly is needed. We recommend degreasing agents to get it clean and to remove any residues of old lubricant that may contain destructive particles. The degreasing agents we supply at Kellfri is OKQ8.



## RISKS AND HAZARDS DURING USE OF MOWING MACHINES

### Risk of crushing

Bystanders may be injured when the machine is lowered to the cutting position. The machine has crushing points around the hinge areas and between the three-point hitch mount and the main body.

### Rotating blades

All persons will be at risk of injury if they stick out their hands or feet under the machine when it is lifted from the ground and the blades are rotating.

### Risk of pinching or risk of trapping body parts

This risk is common in transmission devices such as belt drives, gears and rollers. Ensure that all guards are fitted correctly.



Warning! Rotating knives

### Risk during disengaging of the machine

The heavier the rotating part is, the longer it will continue to rotate after the drive has been switched off. This feature is called "free-wheeling". Rotating blades and other components, such as drive shafts, etc. will continue to spin after the drive has been disconnected. Injuries may occur:

- When the operator releases the equipment, and try to clean or adjust the machine before the components have stopped rotating.
- When the shear bolt in the protective device in the power take off breaks and rotors still spinning while the PTO has stopped. Operator's awareness is the key to safety around rotating parts. Do not raise the machine while the blades are rotating.

### Risk of ejecting objects

Machines that mows throws out material while driving. Foreign objects such as rocks, sticks and other debris can get into the machine and ejected with tremendous speed. Covers on the sides and the front prevents these objects to be thrown out but it does not always guarantee that the guards catch everything that is thrown out.



Bystanders or animals that standing on the way of the projected object can be seriously injured. Never allow bystanders within the vicinity of the machine. Respect the machine's danger zone. **Danger zone 25m!**

### Noise

Please note that the machine is normally used outdoors and that the position of the operator is in the driving seat of the tractor. It is advisable to read the regulations specified in the tractor manual and maintenance instructions.

The sound pressure level exceeds 70 dB during operation. Hearing protection should be used while driving.

## Accidents involving slips and falls

Accidents involving slips and falls often happens as the result of:

- Slippery surface
- Uneven steps and platforms

The potential for slip-and-fall accidents can be significantly reduced by using good judgment. All unprotected rotating machinery is a potential for accidents. Injuries usually occurs when loose clothing or long hair is caught and wrapped around rotating parts such as transmission shafts or drive shafts on the machine. Make sure all guards are fitted.

## DRIVE SAFELY ON PUBLIC ROADS

Always follow traffic rules on public roads and follow the rules that applies for driving tractor with towed equipment on public road.

Make sure reflectors, warning and / or warning flag that indicates protruding equipment is mounted on the machine or the tractor. These indicators must be installed properly and must be visible and easily seen by other drivers on the road.

No one is allowed to lean on or climb on the machine during transport or during work.  
NEVER allow anyone to ride on the machine!

The maximum transport speed should not exceed 20km /h

Important! When driving on the public road, the load or the equipment that protrudes in front or behind the tractor must be properly marked. In the dark, dusk and dawn or weather with poor visibility, the load should be marked with white reflector and a lamp at the front and red reflector and a lamp at the back. In daylight you can mark the load with a flag or piece of fabric in colors that are easy to detect, such as red and yellow.











- In addition on marking front-mounted implements, also try to make front-loaded implements such as bucket, javelin or pallet forks less aggressive if a co-driver should enter them.
- Before embarking on the traffic, it is also always good to go through the vehicle and check that the braking systems on subsequent vehicles work, and that you do not have too worn draw eyes. A worn towing eye can rupture if it is subjected to heavy loads and you can drop the cart.
- It is also good to check that the SMV sign is visible from behind. If it is obscured by subsequent implements or cargo, you have to hang on an extra farthest on the back of the car.



## WARNING LABELS

Ensure that warning labels are always clearly visible, clean warning labels if necessary. Do not flush with a high pressure directly on the warning label. If sticker is damaged, replaced with new decals.

SYMBOL	Explanatio
	<p>Read the instruction manual before starting the operation!</p>
	<p>Warning for rotating knives! Warning! risk of crushing! Never put hands or other body parts in the machine until all moving parts has stopped. Never use a machine with faulty safety guard. Warning for rotating PTO, Risk of getting trap or crushing!</p>
	<p>Warning for thrown objects! Respect the danger zone of the machine/imple- ment.</p>
	<p>Grease after 10h of operation Information: pull out the key fro the ignition before repair or service. Always check nuts and bolt are tightened after reparation or maintenance.</p>
	<p>Information symbol, the macine is imade for one man operation. No one is allowed to be in visinity of the danger zone during operation</p>
	<p>Warning- Risk of accidents for children! Children must not be near the machine!</p>
	<p>Do not exposed the product to rain, When not in use, store the product always in a dry place, preferably under the roof.</p>
	<p>The product is CE-marked</p>

SERVICE	INTERVAL	
Flails	Before each run	Replace all broken flails. Sharp flails gives better result. When replacing any flails ensure that the bolts are firmly tightened.
	During operation	Always listen to any unusual noise
	After each run	Check
Gearbox	Before each run	Check oil level
Transmission oil 80W-90	After every 50 operation hours	First oil change
	After every 100 operation hours or once a year	Oil change Amount: 1,0 L
Rotor	After every 20 operation hours	Lubricate
Belts	After 1 hour use Regularly	Belt tension; check and tighten When the belt is pressed the belt should move about 20 mm (10mm each side)
Hydraulic	Before each run	Check all hydraulic tubes are intact, not broken, right connected and not leaking.
Machine	After each run	Rinse soil and grass with water id necessary

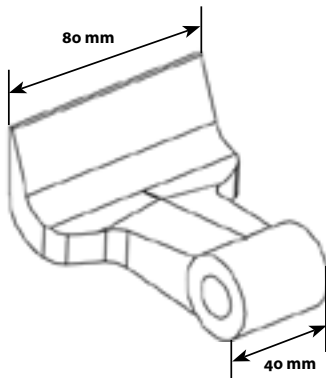
TROUBLESHOOTING/ ERROR	MEASURE
Flail mower cuts uneven or poorly	Check that all flails are undamaged and properly tightened. Adjust the support roller and make sure it's properly mounted Check and tighten all belts
The cutting sound change	Check the roller Check the tensioning of the V-belt Check the flails
Excessive vibrations	Check the flails and the roller
The hydraulic is not working	Check all tubes and couplings

### WARNING!

Never use different types of flail on the machine.

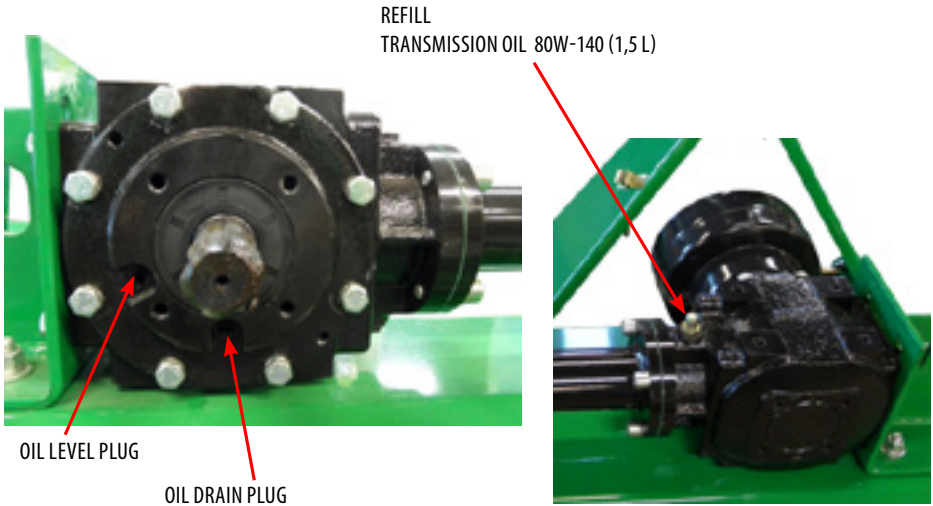
Always check the tightening torque on each flail after replacing.

Make sure that bolts/nuts are well tightened and cannot come loose.



Installation of hammer flail

## GEARBOX

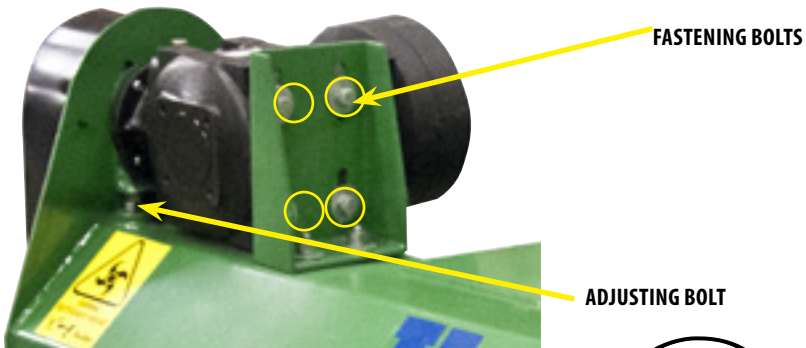


**CHECK THE TENSION OF THE BELTS REGULARLY.**

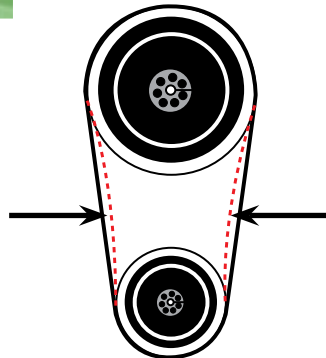
**NEW MACHINE'S SHOULD BE CHECK AND RETIGHTEN AFTER 2 HOURS OF OPERATION**

### BELT ADJUSTMENT

Release the mounting bolts (see illustration), then adjust the adjusting bolt until the belts are sufficiently tensioned.

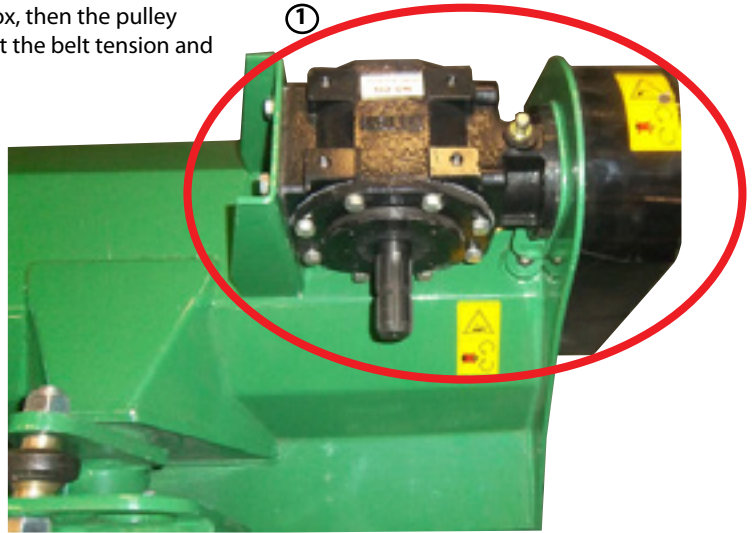


Check the belt tension regularly  
When pressing the belt, there should be about 20 mm space  
(10 mm on each side) as illustrated:

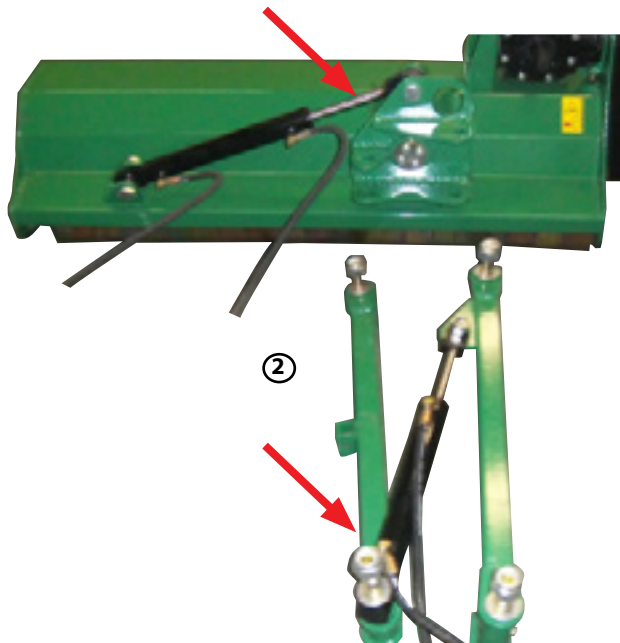


## MACHINE ASSEMBLY I

- 1.) Mount the gearbox, then the pulley and the belts. Adjust the belt tension and tighten all bolts

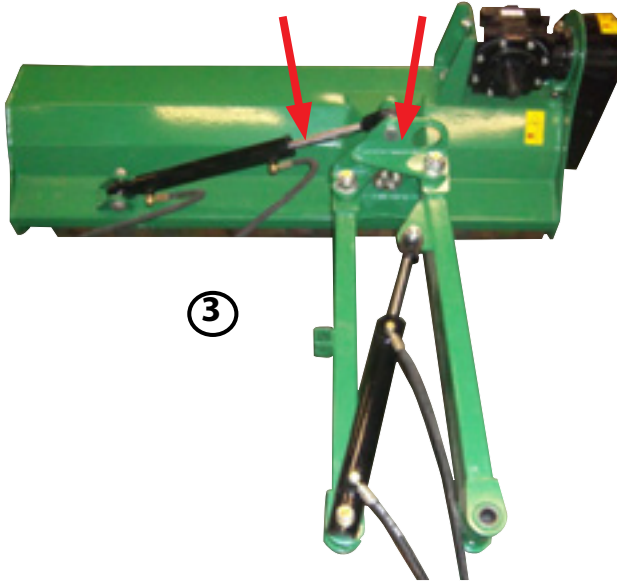


- 2.) Mount the cylinders one on the unit and one on the swing arm.

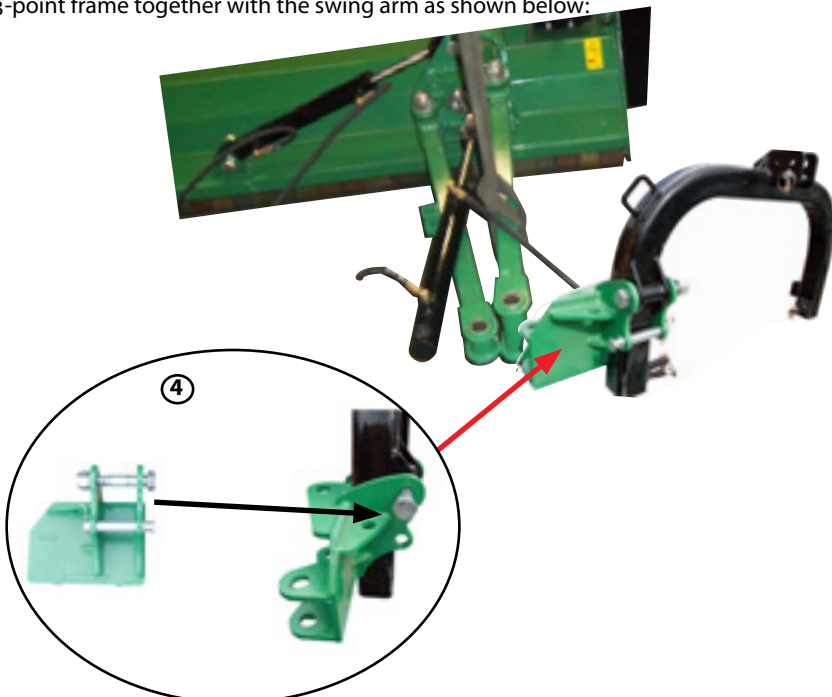


## MACHINE ASSEMBLY II

3.) With help of a lifting device, lift the swing arm and mount it on the cutting unit



4.) Mount the bracket for the folding arm onto the three point frame and finally assemble the 3-point frame together with the swing arm as shown below:





## MACHINE ASSEMBLY III

5.) Pull the hydraulic hoses through the loop on the three-point bracket. Check that the hoses are drawn through the holder and that the hoses are not sharply bend or get squeezed when the mashine is moving.



## INSTRUCTIONS FOR CUTTING PTO SHAFT

Remove the protective cover.



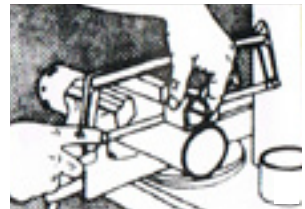
Measure and cut the transmission shaft to the desired length. **NOTE!** The shaft must not be cut more than half the length of the pipe.



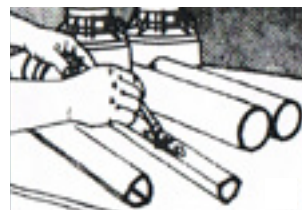
Fill the tube edges.



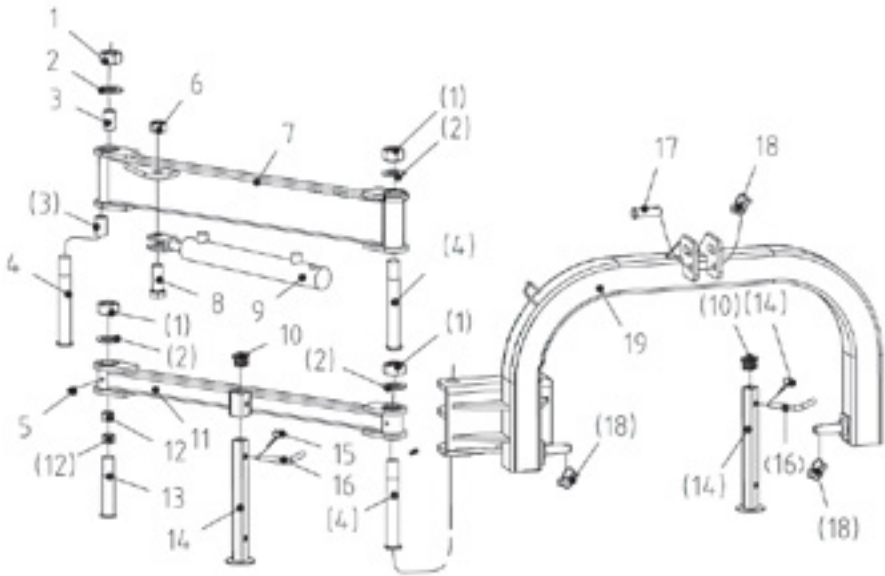
Cut of the protection tube to the same length as transmission shaft.



Lubricate the transmission shaft and mount the protective cover.

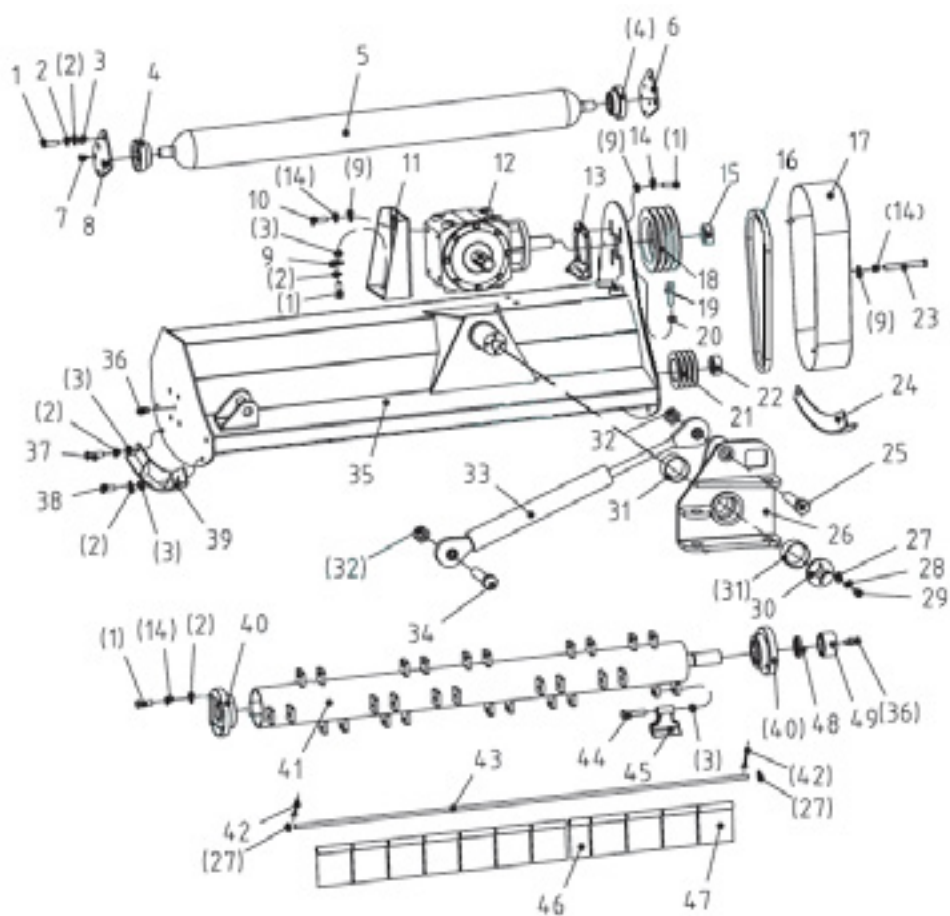


## DRAWING I



POS.No	Specification	Qty
1	Lock nut m30	4
2	Washer	4
3	Bearing 30x34x40	8
4	Steering pin for swing arm	3
5	Grease nipple M8x1	4
6	Locking nut m24	1
7	Swivel arm (large)	1
8	Banjo fitting M24x65	1
9	Swing Cylinder	1
10	Plug	2
11	Swivel arm (small)	1
12	Bearing 30x34x24	4
13	Pin to swing arm	1
14	Support leg	1
15	R - pin	2
16	Pin	2
17	Pin	1
18	Locking pin	3
19	3-point frame	1

## DRAWING II



POS.No	Specification	Qty
1	Bolt M12x35	16
2	Washers	20
3	Lock nut M12	8
4	Ball Bearings (UC205)	2
5	Support roller	1
6	Mounting bracket for the roller (left)	1
7	Countersunk screw M8x20	8
8	Mounting bracket for the roller (right)	1
9	Large washer	10
10	Bolt M12x25	4
11	Mounting bracket - Gearbox	1
12	Gearbox	1
13	Adjustment plate	1
14	Spring washer	17
15	Pulley lock 33x60	1
16	Belt BX965	3
17	Guard for the belt	1
18	Pulley (large)	1
19	Bolt M12x1,25x50	1
20	Bolt M12x1.25	1
21	Pulley (small)	2
22	Pulley calmp bushing 35x60	1
23	Bolt M12x90	1
24	Skid (left)	1
25	Bolt M24x120	1

POS.No	Specification	Qty
26	Attachement bracket 3point frame and swing arm	1
27	Washer	6
28	Spring washer	4
29	Bolt M12x25	4
30	Guard cover	2
31	Bearing 63x68x40	2
32	Lock nut M24	2
33	Swing Cylinder	1
34	Bolt M24x110	1
35	Cover	1
36	Grease nipple	1
37	Bolt M12x40	2
38	Bolt M12x30	2
39	Skid (right)	1
40	Ball bearings UC207	2
41	Roller	1
42	Split pin	2
43	Shaft for mud flap	1
44	Bolt M12x85	
45	H flail	
46	Mud flap (existing)	
47	Mud flap (optional)	
48	Oil seal 55x80x8	1
49	Spacers	1

## SPARE PARTS

Spareparts no.	Specification
R35-SKL145.001	Swing cylinder SKL145
R35-SKL145.002	Seal kit for the swing cylinder SKL145
R35-SKL145.003	Support leg SKL145
R35-SKL145.004	Support roller SKL145
R35-SKL145.005	R10-Uc205 bearing for the roller SKL145
R35-SKL145.006	Hammer flail 80 mm/480 g
R35-SKL145.007	Clamping bush big pulley 33*60 SKL145
R35-SKL145.008	V-belt BX38 Li965
R35-SKL145.009	Seal kit Tipping cylinder SKL145
R35-SKL145.010	Bearing knife cylinder/rotor shaft SKL145
R35-SKL145.011	knife cylinder /rotor shaft SKL145
R35-SKL145.012	guard for the rotor shaftSKL145
R35-SKL145.013	R60-seal kit.035 (55x80x08)
R35-SKL145.014	Right roller holder
R35-SKL145.015	Ledft roller holder
R35-SKL145.016	Hydraulic cylinder tilt
R35-SKL145.017	PTO shaft
R35-SKL145.018	Steering pin for the swing arm
R35-SKL145.019	Three point frame
R35-SKL145.020	Bolt for belt adjustment M12*1,25*30
R35-SKL145.021	Swing arm with support leg holder
R35-SKL145.022	Mounting kit
R35-SKL145.023	Angle bracket for the gearbox

## DEVIATION REQUEST FORM

We are grateful for your help pointing out any inaccuracies in the Kellfri product delivered to you. Before making a complaint please read Kellfri's Purchasing terms in our catalog or Kellfri's website at [www.kellfri.co.uk](http://www.kellfri.co.uk) as well as enclosed User's manual that comes with the machine.

Please fill in the details below and attach photo or other information in order for us to process your case in the best way possible. To get the best information regarding the possible errors in the machine / product we would like to ask you to take 4 pictures of the machine / product - 2 photos on the entire machine from 2 different angles and 2 photos close-ups on the error itself from 2 different angles. We sell our products through selected retailers. Please contact your retailer for the applicable purchase and delivery terms.

Buyer:	Customer no:	
Address:	Invoice no:	
E-mail:	Phone no:	
When was the product delivered?	When was the product taken into operation?	Did the product function as it should upon delivery? Yes      No

Product name or No:
Serial no.:

REASON	YES	REASON	YES
(11) Shipping damage*		(05) Wrong price	
(09) Product reclamation*		(02) Wrong order /Charge-back	
(04) Wrong delivery of product		(99) Other reason *	
(03) Wrong quantity		* Please fill the form below as detailed as possible	

Please provide a description of the defected product/part or what the error is :

Describe event progress:

Other information:

Buyer's signature:	Date:
--------------------	-------

*To be completed by the dealer*

Dealer information:	Invoice no.:
---------------------	--------------

Signature:	Date:
------------	-------

# Kellfri

Send the form and photos to:  
Kellfri AB  
Service department  
Munkatorpsgratan 6  
532 37 Skara

Or e-mail Service  
[service@kellfri.se](mailto:service@kellfri.se)

KELLFRI AB  
Munkatorpsgratan 6  
SE-532 37 SKARA

Phone +46 (0)511-242 50  
Fax +46 (0)511-168 33  
Web: [www.kellfri.se](http://www.kellfri.se)  
E-mail: [info@kellfri.se](mailto:info@kellfri.se)  
Updated: 20181128

## WARRANTY TERMS AND CONDITIONS

Validity of the warranty	- Kellfri's Warranty is valid 12 months from the date of purchase.
This warranty replaces	- Compensation for spare parts after acknowledgment that the fault lies on the material or manufacturing defects.
This guarantee do not cover	<ul style="list-style-type: none"><li>• Labour costs</li><li>• Travel expenses</li><li>• Any modification that the buyer himself has/had made.</li><li>• Any consequential damages that occurred due to damage to the machine.</li><li>• Damage due to normal deterioration of the machine, inadequate: service, user inexperience or use of spare parts which are not original.</li><li>• Wear parts such as hoses, seals, oils, and mechanical belts</li></ul>

## EC-DECLARATION OF CONFORMITY, ORIGINAL



According to 2006/42/EC, Annex 2A  
Kellfri AB  
Munkatorpsgratan 6  
532 37 Skara, Sweden

Declares that the machine

Name: 35-SKL145

Type: Verge Flail Mower

Complies with all applicable provisions of the Machinery Directive 2006/42/EC.  
Other equipment must meet the hardware requirements of the Directive.

Kjell Johansson  
Product Development Manager

## CUSTOMER SERVICE

*You are always welcome to give your feedbacks, reviews or ask us about our equipment and products. Kellfri AB is constantly working on further developing their products and therefore reserves the right to modify, among other things the design and appearance without further notice.*