

35-VKMATVF FLAIL MOWER ATV FRONT MOUNTED



Kellfri

Carefully read the operating instructions
before using the product!
Operating instructions in original

TABLE OF CONTENTS

Introduction	3
Product information	3
Safety instructions	4
Instructions for emergency situations	4
Personal protection	4
Surroundings	5
Before use	5
Environment	5
Use	6
After use	6
Maintenance and service	7
Transportation and set-up	7
Recycling	7
Risks and hazards associated with the use of garden machinery	8 - 9
Warning labels	10
Chemicals	11
Connecting	12
Handle fuel with caution	12
Parts 35-VKMATVF	13
Installation	14 - 15
Exploded diagrams and materials list	16 - 21
Grease points	22
Deviation form	23
Warranty terms and conditions	24

Important! Our machine is suitable for the majority of ATV models, thanks to the universal attachment included. *NOTE: Final adjustment by the customer may be necessary.*

Recommended ATV size: 500 cubic metres and larger.

Clear advantage if ATV has four-wheel drive.

If necessary add counterweight to rear part of ATV and insert front springs*.

Remember that steering ability is affected if ATV does not have servo.

Install cutting unit as close to the machine as possible.

If there are sharp turns during work, the equipment must be raised.

Ground clearance varies among models.

If using side shift adjustment, steer side shift adjustment towards centre when lifting.

****Ask your ATV dealer.***

Kellfri designs and supplies efficient, affordable machinery and components for forestry, agriculture, construction and gardening in Sweden, the rest of the Nordic region and Europe.

We recommend that you always read and follow the safety instructions and the instructions in the machine's instruction manual.

Kellfri is not liable for any errors in this document.

INTRODUCTION

Thank you for choosing a product from Kellfri AB. Compliance with the safety instructions, instruction manual and sound common sense will guarantee many years of enjoyment using the product. Kellfri's equipment and products are aimed at self-employed farmers, horse enthusiasts and other country-dwellers with stringent performance demands.

PRODUCT INFORMATION

In distinction from a flail mower that is rear mounted, with a front mounted flail mower for your ATV you can see what and where you are cutting, and thus reduce the risk of driving over material that can damage the machine.

A major advantage of a front mounted flail mower is that you minimise compressed grass, as the flail mower reaches the grass before you drive over it yourself with your ATV.

This makes cutting more effective.

Moreover, our front mounted flail mower is supplied with side shift adjustment as standard, which enables you to set the flail mower on the left or the right. Positioning the flail mower on the right or the left enables you to simply access fences, trees and posts.

As the flail mower is front mounted and adapted for ATVs, you access places that wouldn't normally be possible with a large, rear mounted flail mower.

Kellfri's front mounted flail mower is supplied with 44 Y-flails which break the grass.

Y-flails are also ideal for occasions when you need to cut coarser material such as saplings.

AREA OF USE

Our front mounted flail mower for ATVs is an excellent alternative if you want to quickly get started on your work. The flail mower is suitable for tasks including cutting pastures, clearing brushwood and mowing grass.

NOTE: The machine is supplied without oil.

Oil is supplied with the machine for filling by the customer.

TECHNICAL DATA	35-VKMATVF
Length	1830 mm
Width	1240 mm
Height	770 mm
Cutting width	1005 mm
Working width	1240 mm (without side shift adjustment fitted) Working width is approx. 300-400 mm wider with side shift adjustment fitted.
Power requirement	15 hp
Engine	Petrol
Flails	44 Y flails
Weight VKM	125 kg
Weight of attachment device	17 kg
Weight of side shift adjustment	13 kg

SAFETY INSTRUCTIONS

Before using the equipment or product, and for the safety of yourself and others, you must read the safety instructions and the instruction manual and understand their contents. Always keep the safety instructions and instruction manual handy for users of the equipment or product. For the safety of both yourself and others, it may be a good idea to read through the safety instructions every now and then. If the safety instructions or the instruction manual are damaged, or become unusable for any other reason, new copies may be ordered from: Kellfri AB, Munkatorpsgratan 6, SE-532 37 SKARA, Sweden. Tel.: +46 511 242 50

The safety instructions can also be downloaded from the Kellfri website: www.kellfri.co.uk
Do not use the equipment or product if you feel ill, tired or are under the influence of alcohol. Do not use the equipment or product if you are taking prescribed medication or drugs, or suffering from severe depression or mental illness. Always comply with general rules of the road and applicable rules stipulated by the Animal Welfare Act. People under the age of 15 are not allowed to use the equipment.



Warning!

The original design of the machine must not, under any circumstances, be modified without the approval of the manufacturer. Unauthorised modifications and/or accessories may cause life-threatening injuries or death to users and others.

Kellfri is not liable for any modifications, changes or rebuilds carried out by customers.

Where the machine is used professionally, employers are responsible for ensuring that users of the machine have theoretical and practical knowledge of the machine and that work is performed in a safe manner. Stay informed by complying with work environment legislation; contact your local work environment authority.

INSTRUCTIONS FOR EMERGENCY SITUATIONS

In case of emergency, call 112.

Always have a mobile phone or emergency phone available when working alone. A first-aid kit and fire extinguisher must be kept in an easily accessible location when carrying out any work, maintenance or service.

PERSONAL PROTECTION

Always use suitable protection equipment. Do not wear loose clothing or jewellery while working with the equipment. Long hair should be tied up when working with equipment that has moving parts. Use protective gloves to avoid the risk of burns if hot surfaces such as exhaust pipes are touched, and to avoid oil and petrol getting in contact with the skin. Ear defenders must be worn whilst the engine is running.



SURROUNDINGS

Check that the work area is free from bystanders and objects before hitching or using the equipment. Otherwise, there is a risk of serious injury. Be extra careful if there are children in the vicinity of the area where the equipment or product is used or stored. Check that there are no low-hanging electrical cables within the work area. Exercise caution when working on slopes and close to ditches.

Always work alone with equipment or products that are made for working alone. Never leave rubbish in the work area, and keep work areas clean. Always respect the equipment's risk zone.



BEFORE USE

Carefully read the safety instructions and the instruction manual. Make sure that you understand the safety instructions, the instruction manual and warning decals. Use common sense and suitable personal protective equipment when using the product. Always check the performance of the machine combination to be used. It is important that these are compatible and work satisfactorily together. This is to ensure that the equipment or product works as expected, and to guarantee the safety of yourself and others. Carry out a visual inspection of the equipment or product before use. Repair or replace damaged or worn parts to reduce the risk of injury. Grease moving parts and check that all nuts and bolts are tightened. Correct if necessary. Learn and remember the correct working method. Beginners must work slowly until they have learned how the machine or product works.

Users/customers are responsible for ensuring users can handle the situation. If a user feels that the machine is dangerous to use, they should not use it until they have received thorough training.



ENVIRONMENT



- Disposal of oil and other waste
- Improper disposal of oil or other waste may be hazardous to the environment.
- When oil is emptied from the machine, it must be poured into a leak-proof container suitable for oil. It is not permissible to store oil in a container used for food or drink, in order to avoid the oil being consumed by mistake and causing serious injury.
- It is prohibited to spill oil on the ground, or pour it into a drain or anywhere leading to a water source.
- Discarded oil, fuel, coolant, brake fluid, filters and batteries must not be thrown away or emptied anyway at all. Contact your local authority for further information.

USE

Only those who understand the safety instructions and the instruction manual may use the equipment or product. Exercise caution and care when working with the equipment or product and only use them in the way described in the instruction manual.

There is a risk of crushing when working with equipment that has moving parts. Exercise caution when working with equipment with hydraulic hoses, as oil under pressure can penetrate the skin. Immediately seek medical attention if this should occur. Always work alone with equipment that is made for working alone.

Respect the equipment's risk zone.



For further information about your machine, read the machine's instruction manual.

Warning symbols identify important safety aspects in this manual in order to help you and others avoid dangers and accidents. When using the machine: Be extremely careful!



DANGER!

This symbol indicates that a serious accident will occur if the directions in the instruction manual are not followed. The accident will lead to serious injury, possibly death, or serious damage.



Warning!

This symbol indicates that an accident will occur if the directions in the manual are not followed. The accident will lead to serious injury or damage.



CAUTION!

This symbol indicates that an accident may occur if the directions are not followed. The accident will lead to injury or damage.

NOTE:

NOTE: indicates the risk of a breakdown if the directions are not followed.

Where the machine is used professionally, employers are responsible for ensuring that users of the machine have theoretical and practical knowledge of the machine and that work is performed in a safe manner. Stay informed by complying with work environment legislation; contact your local work environment authority.

AFTER USE

- Ensure that the equipment/product is standing on level ground when it is disconnected. Use stabilisers, if these are included with the product/tool.
- Wash, rinse with water and dry if necessary.
- Re-lubricate if necessary.

MAINTENANCE AND SERVICE

- Make sure that the equipment is stable and cannot tip over when carrying out maintenance and service work.
- Replace damaged or worn parts to reduce the risk of injuries.
- Carry out maintenance, service and checks in line with recommendations.
- Only use spare parts with equal performance to reduce the risk of injuries and breakdowns.
- All electrical repairs and electrical connections must be carried out by a qualified person.

Check that all nuts and bolts are tightened after maintenance and service work.
Always test the machine before starting work.



IMPORTANT! Check the oil level and lubricate grease points regularly!

IMPORTANT! Avoid over-lubricating. Dirt collects easily on exposed grease and causes increased wear. After lubrication, wipe excess grease off from couplings.



DANGER!

WARNING: Pressurised oil and fuel leaks can penetrate skin and cause serious injuries. Do not use your hands to locate leaks. Use a piece of paper or cardboard to look for leaks.

Kellfri AB has a policy of continuous product development and therefore reserves the right to make modifications, e.g. to the design and appearance of the product, without prior notice.

TRANSPORTATION AND SET-UP

- Check that the work area is free from bystanders, children and objects before driving off.
- Always observe additional caution during transport and moving.
- Ensure that the equipment or product is well anchored and that available transport lashings are fitted.
- Always position the load as low as possible. All protruding loads should be well anchored.
- Respect the risk zones even during transport and moving.
- Do not permit anyone to walk under suspended loads when carrying out lifts.
- Trailers used for transport should have brakes that work.
- An SMV sign must be attached when travelling on public roads.
- Check tyre pressure - see information on tyre pages. Do not exceed the maximum pressure!
- Always store the equipment or product in a dry place, preferably under a roof, when not in use.
- Ensure that the equipment or product is stable and cannot tip over.
- Never permit children to play at the storage site.
- Be aware of the tipping risk!

RECYCLING

For scrapping, the equipment/product must be dismantled and transported to a recycling station designated by your local authority. Any liquids should be collected and transported to a recycling station designated by your local authority. Contact your local authority for further information.



RISKS AND HAZARDS ASSOCIATED WITH THE USE OF GARDEN MACHINERY

Risk of crushing

Observers can be injured when the machine is lowered in the cutting position. Pasture toppers have crushing points around the hinge areas and between the three-point attachment and the main body. Respect the risk zone of 15 m!

Rotating blades

WARNING! Any person can risk injury by putting their hands or feet under the machine when it is lifted from the ground and the blades are still rotating. Nobody is allowed in the vicinity during operation or when the machine is running.

Risk of crushing

This risk is common in mechanical transmission devices such as belt drives, bevel gears and rollers. Ensure that all guards are correctly fitted.



Rotating blades

Risk when disengaging machine

The heavier a rotating part is, the longer it will continue to rotate after the wheel drive has been disconnected. This property is called free-wheeling. Rotating blades and other components such as drive shafts etc. will continue to spin round after the wheel drive has been disconnected. Injuries occur:

- When the operator disconnects the equipment and attempts to clean or adjust the machine before the components have stopped rotating.
- When the shear bolt in the protective device in the power outlet disintegrates and the rotors continue to spin while the power outlet has stopped. The operator's awareness is of key importance for safety around rotating parts. Never raise the machine while the blades are still rotating!

Risk of ejected objects

Machines that cut grass eject material during operation. Foreign objects such as stones, sticks and other debris can find their way under the machine and be ejected at great speed. Metal guards at the sides and front prevent these objects being ejected, but this is no guarantee that they will always capture everything.



Observers or animals standing in the way of an ejected object can suffer serious injury. Never operate the machine when there are observers nearby. **Respect the equipment's risk zone of 15-25 m!**

Noise

Note that the machine is intended for outdoor use and that the operator's position is the driver's seat of the tractor. It is advisable to read the directions given in the tractor manual and maintenance instructions. The sound pressure level during operation exceeds 70 dB. Hearing protection must therefore be worn during operation.

Accidents involving slipping and falling are often a result of:

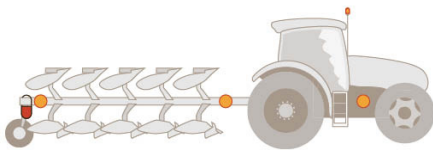
- Slippery surface
- Uneven steps and work platforms.

The risk of slips and falls can be reduced considerably by exercising good judgement.

All unprotected rotating machine parts increase the risk of accidents. Accidents usually occur when loose-fitting clothing or long hair is caught and wrapped around rotating parts, such as PTO shafts or drive shafts on the machine. Ensure that all guards are correctly fitted.

Drive safely on public roads

- Always follow traffic safety rules on public roads, and following the regulations applying to driving a tractor with towed equipment on a public road.
- Check that reflectors, warning signals and/or warning flags indicating protruding equipment are fitted to the machine or tractor. These indicators must be correctly mounted, and must be visible and easy for drivers of other vehicles to see.
- Observers must not lean against or climb onto the machine during transport or during work. NEVER allow anyone to travel on the machine!
- The maximum transportation speed must not exceed 20 km/h
- Brake regulations: If the gross weight of the trailer exceeds the gross weight of the towing vehicle, the trailer must be equipped with a brake. For further information, contact the traffic authorities.
- IMPORTANT! Mark protruding equipment clearly with additional lights or suitable reflectors. It is important that the equipment is visible! If you are driving on a public road, any load or equipment protruding in front of or behind the tractor must be marked. In darkness, at dusk or dawn or in weather with poor visibility, the load must be marked with a white reflector and lantern at the front and a red reflector and lantern at the rear. In daylight you can mark the load with a flag or a piece of fabric in colours which are easy to notice, such as red and yellow.



- Think about front-loaded equipment. As well as marking front-loaded equipment clearly, you can also try to make front-loaded equipment such as a bucket, bale spike or pallet forks less aggressive if another driver should collide with it.
- Before going out onto public roads, it is also always advisable to look over your vehicle and check that the brake system on the following vehicle is working, and that your tow bar eyes are not too worn. A worn-out towing eye can break if subjected to a heavy load, and you can lose your cart.
- It is also advisable to check that the SMV sign is clearly visible from behind. If it is obscured by any equipment or load behind, you must hang an additional one at the rear of the vehicle train.



WARNING LABELS

Make sure warning labels are always visible and clean them when necessary. Do not use a high-pressure washer directly on the warning label. If a part with a decal is replaced, or the decal becomes worn or in any other way unusable, order a new set of decals.

SYMBOL	EXPLANATION
 	Read the operating manual! Before carrying out work.
 	WARNING! Rotating machine parts. WARNING! Crushing risk! Never use the machine without all guards correctly mounted. Do not put your hand or any other part of your body into the machine while it is running.
 	Ejection warning! Risk area 25 metres. Respect the machine's risk zone!
 	- Lubrication - Tighten all bolts, nuts and couplings before use.
	The machine is for individual work only. Nobody is allowed in the vicinity during operation.
 	Warning! Keep off the machine! Warning! Accident risk for children! Children are not allowed in the vicinity of the machine.
	Warning! Be aware that parts of the machine may be hot after use! Risk of burns.
  	Warning for inhalation of toxic gases. Fumes contain toxic substances. The fuel is highly flammable. It can cause injury, death or damage to property. Fire - smoking is prohibited in the vicinity of the machine.
	Always store the machine on a dry surface, preferably under a roof, when not in use.
	The product is CE labelled

CHEMICALS

To maximise the service life of a product/equipment, maintenance - and not least preventive maintenance - is important, and this is largely what greases and oils do. Carefully read the instruction manuals for your new products or equipment to ensure correct maintenance and service life and that the warranty remains valid!

Lubricating greases

First aid measures.

Inhalation - In the event of unintended inhalation of fumes, move the injured person into fresh air.

Skin contact - Wash with soap and water. Contact a doctor in the event of eczema or skin complaints.

Eye contact - Remove contact lenses, if any, before rinsing. Rinse thoroughly with large amounts of water, including under the eyelids. Contact a doctor if discomfort remains.

Ingestion - DO NOT induce vomiting. Drink water in small quantities. In the event of ingestion or discomfort, contact the poison information service or a doctor.

Hand protection - Wear protective gloves.

Eye protection - Avoid contact with eyes. Wear approved protective goggles.

Body protection - Suitable protective clothing.

Respiratory protection - No protection is necessary during normal handling.

Greases should be stored well-sealed in a cool place in a well-ventilated area. Storage temperature must not exceed 45°C. Keep away from heat, flames and sparks. The function and strength of materials such as steel, plastic, oils, grease etc. deteriorate considerably at very low temperatures (-20 to -30°C).



Keep chemicals out of the reach of children and animals.

Degreasing

To ensure the best lubricating effect, you need to clean parts of the product or equipment from time to time. We recommend degreasing to achieve thorough cleaning and to remove all residues of old lubricant, which may contain destructive particles.

The degreasing agent we supply at Kellfri is OKQ8, in a 20-litre can.



CONNECTING

- Reduce speed when working on slopes and uneven ground.
- Be aware that various parts of the machine can be hot after use.
- Follow the guidelines specified by the ATV manufacturer with regard to towing/pulling of equipment.
- Exercise caution when filling the tank with fuel, particularly if any parts are hot.

Ear defenders must be used during operation.

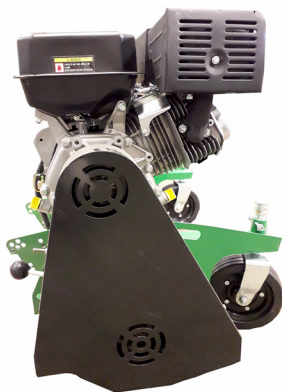


Warning!

Altering the accelerator setting to increase rpm above the recommendations given can invalidate the warranty. Cutting performance will be reduced, fuel consumption will increase and substantial vibrations may occur, which leads to a risk for the user and equipment.

HANDLE FUEL WITH CAUTION

- Use only approved fuel containers.
- Never fill the engine with petrol while it is running.
- Fill the petrol tank outdoors and with caution. Never fill the engine with fuel outdoors.
- Replace the fuel cap securely and wipe off any spilt fuel.



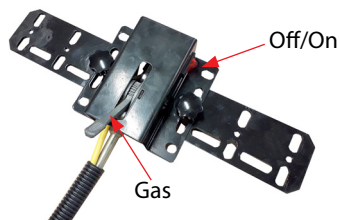
Flail mower from side



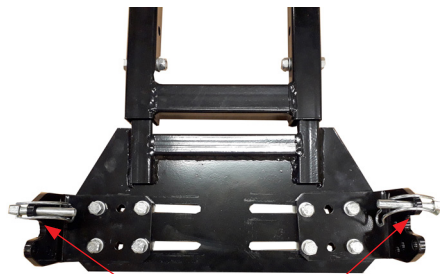
Flail mower towards ATV



Flail mower front



PARTS 35-VKMATVF

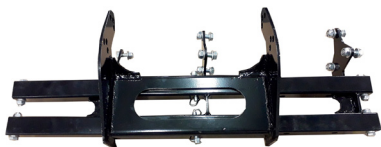


Pins.

Used for attaching the attachment device to the ATV.

Attachment device.

Screws and nuts are fitted to the attachment device on delivery.



The images show the side shift adjustment from various angles.



Side shift adjustment seen from above.

Important! Our machine is suitable for the majority of ATV models, thanks to the universal attachment included. *NOTE: Final adjustment by the customer may be necessary.*

Recommended ATV size: 500 cubic metres and larger.

Clear advantage if ATV has four-wheel drive.

If necessary add counterweight to rear part of ATV and insert front springs*.

Remember that steering ability is affected if ATV does not have servo.

Install cutting unit as close to the machine as possible.

If there are sharp turns during work, the equipment must be raised.

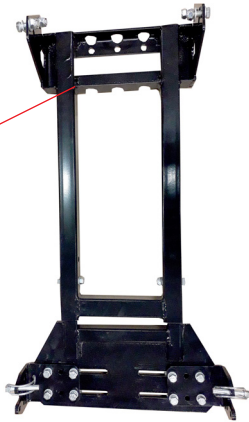
Ground clearance varies among models.

If using side shift adjustment, steer side shift adjustment towards centre when lifting.

****Ask your ATV dealer.***

INSTALLATION

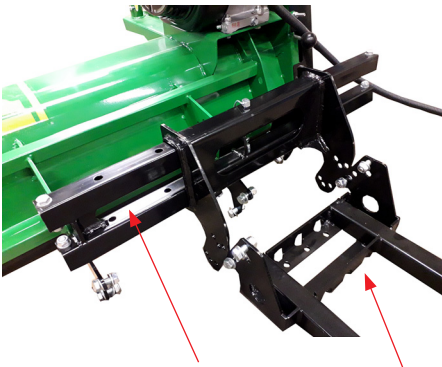
- Installation of attachment device.



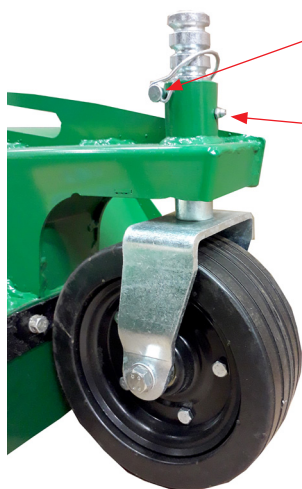
- Installation of side shift adjustment.



- Select left or right installation.



- Installation of side shift adjustment and attachment device.



Adjustment of wheel height.

Remove the pin for adjustment. Re-install the pins to lock the wheel in position.

Grease nipple



Up - On

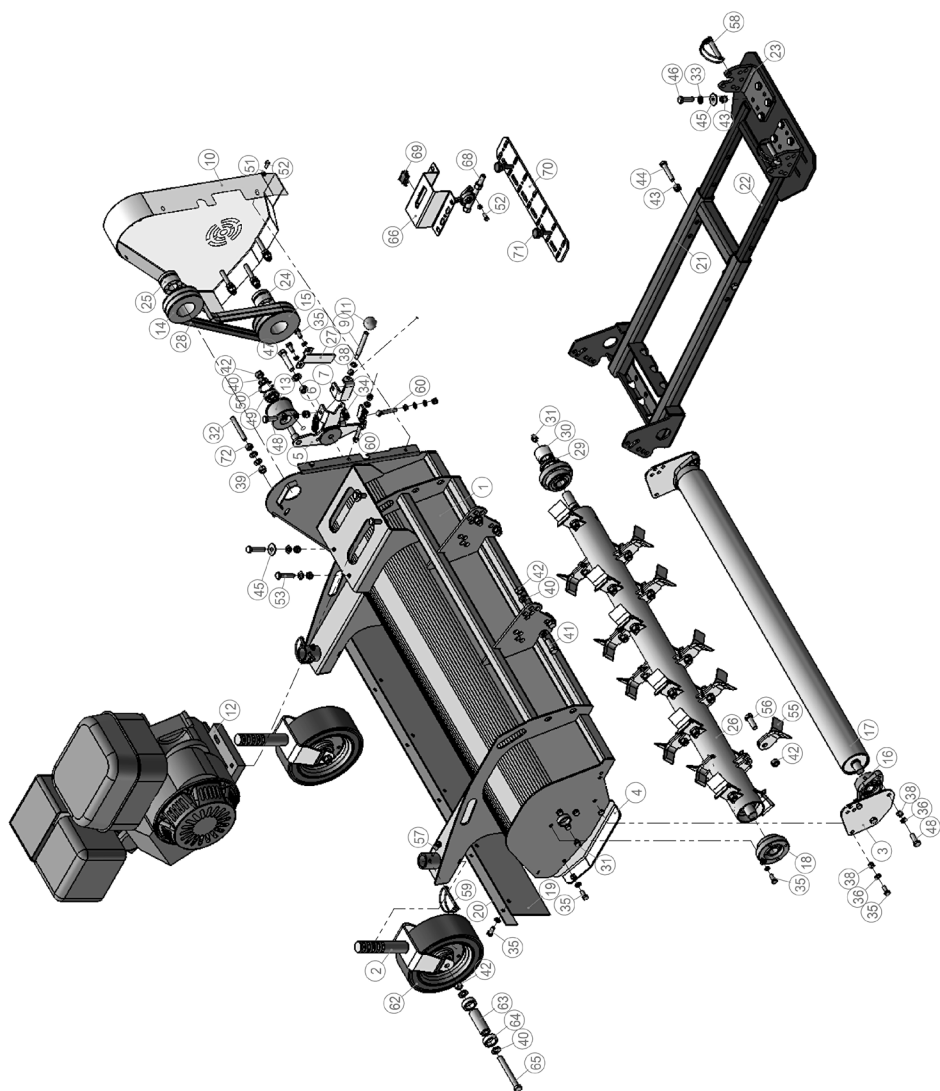
**Operating lever
roller**



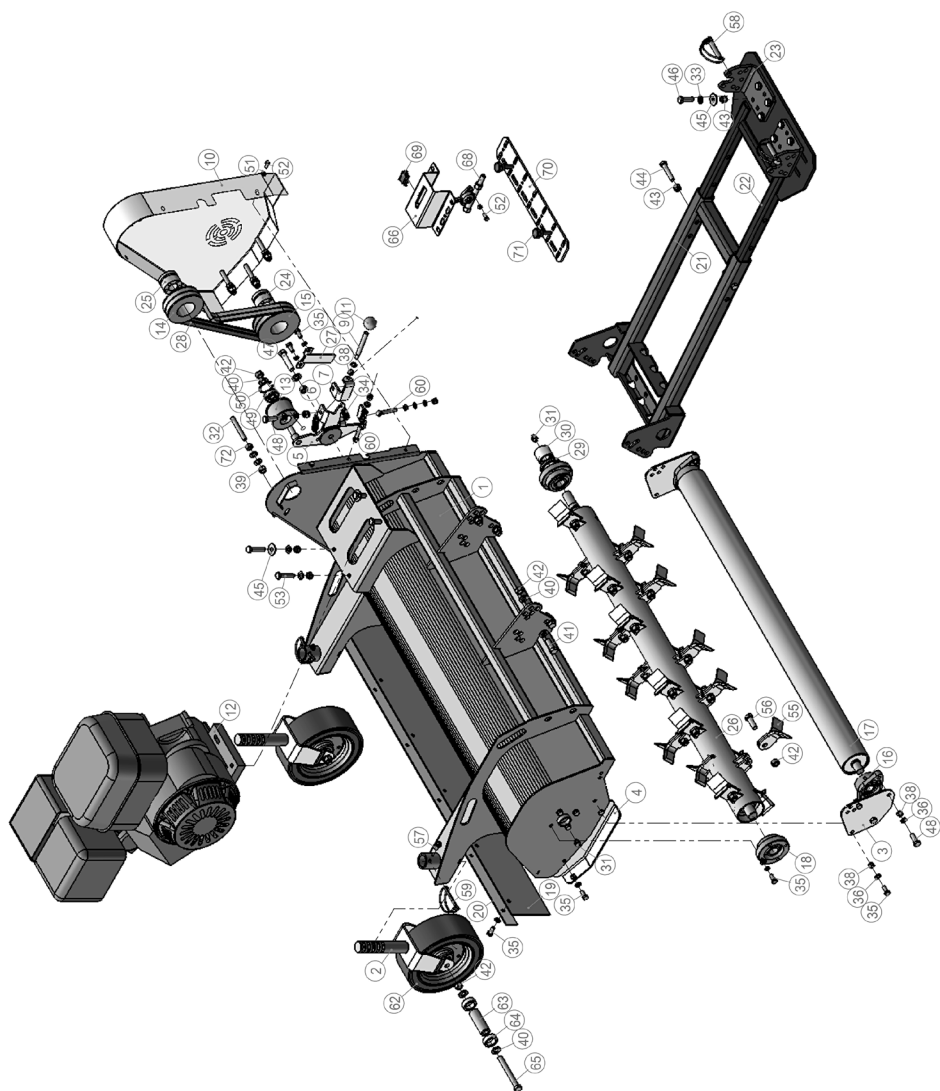
Down - Off



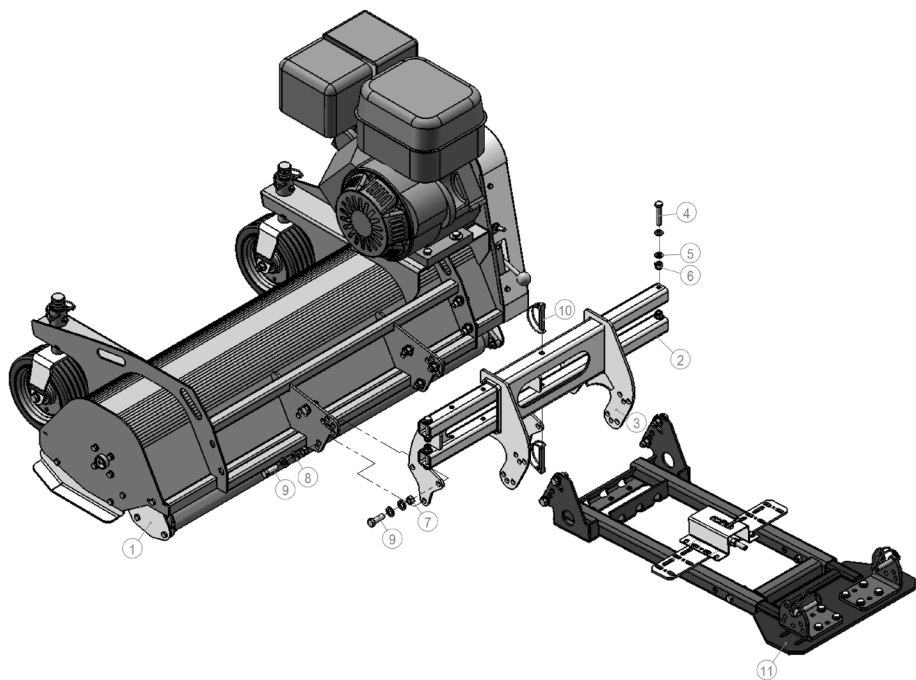
Y flails, 44 pcs



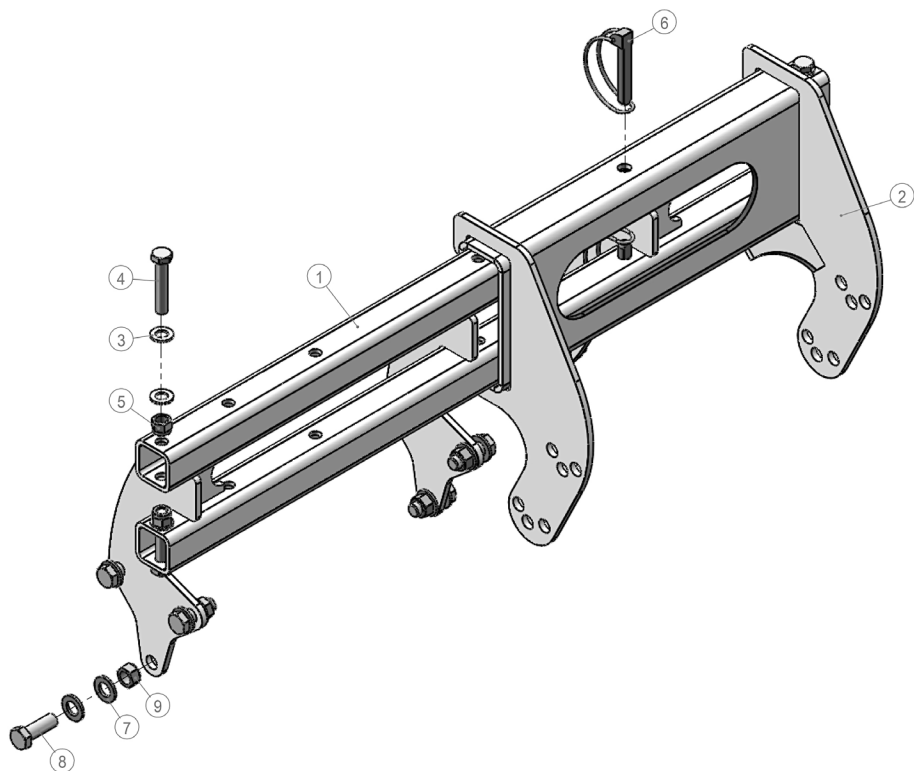
ITEM NO.	DESIGNATION	QUANTITY
1	Protective cover	1
2	Axle	2
3	Mounting plate	2
4	Slide rail	1
5	Pressure plate	1
6	Connection pressure plate	1
7	Tension regulator	1
8	Skid shoe, right	1
9	Operating arm	1
10	Protective cover	1
11	Ball button M10	1
12	Engine 15 hp	1
13	Tension wheel	1
14	Pulley, small	1
15	Pulley, large	1
16	Bearing UCFLU204	2
17	Roller	1
18	Bearing UC205	2
19	Rubber plate	1
20	Rubber strip	1
21	Attachment device, adjust length	1
22	Adjustable fastener	1
23	Angle iron	2
24	Bushing 22x47x34	1
25	Bushing 25.4x50x34	1
26	Blade shaft	1
27	Throttle	1
28	Belt AX39	2
29	Sealing ring 55x40x8	1
30	Oil sealing sleeve	1
31	Nipple M8-1	2
32	Pin	4
33	10 Flat washer	22
34	Tension spring	2
35	Hex key M8x22	22
36	8 Flat washer	29



ITEM NO.	DESIGNATION	QUANTITY
37	Spring washer 8	8
38	Hex lock nut M8	15
39	Hex lock nut M10	8
40	Flat washer 12	14
41	Hex key M12x35	4
42	Hex lock nut M12	30
43	Hex lock nut M10	7
44	Hex key M10x55	2
45	10 Washer	10
46	Hex key M10x35	8
47	Hex key M12x60	1
48	Hex key M10x30	5
49	Bearing 6301-2Z	1
50	Clamp ring 37	1
51	6 Flat washer	4
52	Hex key M6x16	6
53	Hex key M10x45	4
54	Hex lock nut M10	4
55	Y-flail	44
56	Hex key M12x35	22
57	Nipple M6	2
58	Arch with pin 10	2
59	Arch with pin 6x70	2
60	Bolt tension spring M8x50	2
61	Hex lock nut M8	2
62	Tyres	2
63	Axle Ø25	2
64	Spacer	4
65	Hex key M12x110	2
66	Mounting bracket for accelerator	1
67	Hex lock nut M6	2
68	Mounting cable accelerator	1
69	Switch	1
70	Control panel	1
71	Bolt M8x25 (bakelite)	2
72	Hex nut M10	4

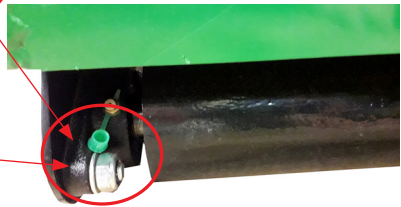
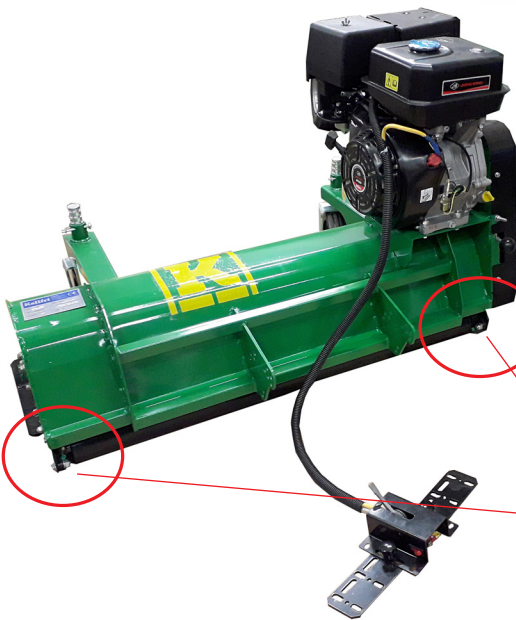
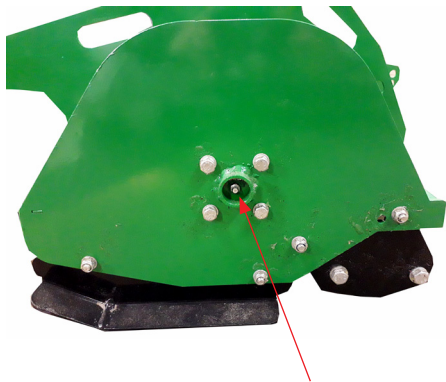


ITEM NO.	DESIGNATION	QUANTITY
1	Front installation	
2	Side shift adjustment, front installation	1
3	Side shift adjustment, rear installation	1
4	Hex key M10x55	4
5	10 Flat washer	8
6	Hex lock nut M10	4
7	Hex lock nut M12	8
8	Flat washer 12	16
9	Hex key M12x35	8
10	Arch with pin 10x60	2
11	Installation, rear	1



ITEM NO.	DESIGNATION	QUANTITY
1	Side shift adjustment, front installation	1
2	Side shift adjustment, rear installation	1
3	10 Flat washer	8
4	Hex key M10x55	4
5	Hex lock nut M10	4
6	Pin 10x60	2
7	Flat washer 12	16
8	Hex key M12x35	8
9	Hex lock nut M12	8

GREASE POINTS



DEVIATION FORM

We are grateful for your help in pointing out any defects in the product supplied to you by Kellfri. Before making a claim, read Kellfri's general purchase terms and conditions in our catalogue or on our website www.kellfri.co.uk, and in the operating manual if supplied. The manual can also be downloaded from manual.kellfri.co.uk

Please fill in the details below and attach photos as documentation so that we can process your case optimally. In order for us to obtain as good an understanding as possible of any faults, please take at least four photos of the defective parts of the machine/equipment; two of the entire equipment from two different angles and two close-ups of the actual damage from two different angles. (Feel free to attach photos on the next page.)

If the product was purchased from a dealer, please contact the dealer in the first instance.

Purchaser**:	Customer number**:
Address**:	Invoice number:
Email**:	Daytime telephone**:

When was the product supplied?	When was the product put into operation?	Was the product working on delivery? YES NO
--------------------------------	--	---

Product name/article number**:

Serial number:

CAUSE	YES
(11) Transport damage*	
(09) Product complaint*	
(04) Wrong goods delivered	
(03) Wrong number	

CAUSE	YES
(05) Wrong price	
(02) Ordered by mistake/ Charge-back	
(99) Other reason*	

* Fill in form below

Required fields**

Description of fault**:

Describe the course of events:

Miscellaneous:

Customer's signature:	Date:
-----------------------	-------

To be filled in by dealer

Dealer:	Invoice number.:
---------	------------------

Signature:	Date:
------------	-------

Kellfri

Send the claim form and photographs to:
Kellfri AB
Service department
Munkatorpsgratan 6
SE-532 37 Skara, Sweden

Or e-mail Service:
service@kellfri.co.uk

KELLFRI AB
Munkatorpsgratan 6
SE-532 37 SKARA,
SWEDEN

Tel. +46 511 242 50
Fax: +46 511 168 33
Web: www.kellfri.co.uk
E-mail: info@kellfri.co.uk
Edition: 28 November 2018

WARRANTY TERMS AND CONDITIONS

- The warranty's validity - Kellfri's warranty is valid for 12 months from the date of purchase
- The warranty covers - Reimbursement for parts replaced after verified material or manufacturing defect.
- The warranty does not cover
- Labour costs
 - Travel costs
 - Machines on which the purchaser has made/commissioned modifications.
 - Any additional costs arising as a result of damage to the machine.
 - Damaged due to normal wear and tear of the machine, substandard servicing, the user's inexperience or use of spare parts that are not original.
 - Wear parts such as hoses, seals, oil and belts.

EC DECLARATION OF CONFORMITY FOR MACHINERY, ORIGINAL



In accordance with 2006/42/EC, Appendix 2A
Kellfri AB
Munkatorpsgratan 6
SE-532 37 Skara, Sweden

Hereby declares that the machine

Name: 35-VKMATVF

Type: Flail mower ATV, front mounted

Conforms with all applicable requirements in the Machinery Directive 2006/42/EC.
Other equipment must comply with the Machinery Directive's requirements.

Kjell Johansson
Product Development Manager

CUSTOMER SERVICE

You are always welcome to give feedback or ask us about our equipment and products. Kellfri AB has a policy of continuous product development and therefore reserves the right to make modifications, e.g. to the design and appearance of the product, without prior notice.

05 June 2019

Kellfri

Kellfri AB
Phone: +46 0511 242 50
Email: info@kellfri.co.uk