



Kellfri[®]

27-HTFL HEDGE TRIMMERS



**READ THIS MANUAL CAREFULLY BEFORE USING THE PRODUCT !!!
INSTRUCTION TRANSLATED FROM THE ORIGINAL**

TABLE OF CONTENTS

Introduction	3
Product information	3
Safety instructions	4
Productsafety information	5
Instruction for emergencies	6
Personal protective equipment	6
Surroundings	6
Warning labels	7
Before using	8
Use	8
Safety in use	8
Machine in different modes	9
After use	9
Transport and storing	10
Maintenance and service	11-13
Hydraulic diagram	14
Installation instructions	15
Exploded diagram of 27-HTFL	16-17
Complaint form	19
Warranty and EC declaration	20

INTRODUCTION

Thank you for choosing a product from Kellfri AB. By following general safety information, operating instructions and common sense, you will have many years of enjoyable use of the product. Kellfris equipment and products are aimed to be use by active farmers with high demands on functionality.

PRODUCT INFORMATION

Powerful hydraulic hedge trimmer for mounting on frontloaders. Kellfri’s hedge trimmer is an efficient tool for trimming trees and bushes. The hedge trimmer has hydraulic angling of the arm and cuts branches up to 3.5 cm. Finger space of 7.5 cm. All blades are fitted with bolts, which makes it easy to replace them.

Mounting requires a double-acting hydraulic outlet for 12 V electric valve, one for the cylinder and one for the cutting bar (hydraulic motor).

Supplied with hydraulic ½ inch, quick coupling male hoses and Euro attachment as standard

TECHNICAL DATA	27-HTFL
Length	3079 mm
Width	706 mm
Height	545 mm
Hydraulic cylinder	40/20-200
Working width	1400 mm
Cuts branches	Up till 35 mm
Weight	115 kg
Working angle min. / Max	-30 °/100°

SAFETY INSTRUCTIONS

Before using the equipment or product, and for the safety of yourself and others, you must read the safety instructions and the instruction manual and understand its contents. Always keep the safety instructions and instruction manual handy for users of the equipment or product. For the safety of both yourself and others, it may be a good idea to read through the safety instructions every now and then.

If the safety instructions or instruction manual gets damaged or in any other way cannot be used, new copies may be ordered from:

Kellfri AB, Munkatorpsgratan 6, 532 37 SKARA

Sweden. Tel.: +46 (0)511 242 50 (Pls. contact the retailer) <https://www.kellfri.co.uk/>

Do not use the equipment or product if you feel ill, tired or are under the influence of alcohol. Do not use the equipment or product if you are taking prescribed medication or drugs. Always comply with general rules of the road and applicable rules stipulated by the Swedish Protection of Animals Act. People under the age of 15 are not allowed to use the equipment.



The product must not in any circumstances be modified without permission from the manufacturer. Unauthorized modification of the machine and/or accessories can cause fatal injuries or death to operator or others.

Warning!

PRODUCT SAFETY INFORMATION

- Read the instruction manual carefully before using the machine.
- Keep the area free from other people. Moving parts increases the risk of accidents. Respect the danger zone of the machine! Only the operator should stand near the machine during operation.
- Children must never be present within the work area, never let children play with the machine.
- The tool works best and safest when it is used in that capacity it is meant for, do not try by various means to increase machine capacity.
- Never leave the machine unattended while it is running. Turn off the tractor engine and apply the parking brake whenever you leave, even for a short while.
- Never leave the machine up-lifted. The hydraulic can lose pressure and cause the equipment to fall down.
- Ensure that all guards are always mounted and can not come off after use. The machine may only be used in the manner described in this manual. Do not try to use and cut other materials such as metal and hard plastic.
- Run the new machine at low speed the first few hours, not high speed and full load.
- Avoid getting oil on the skin. If this occurs, rinse thoroughly with water.
- Only you who uses the machine should stand near the machine during operation.
- Do not use the machine without all guards are fitted correctly.
- Check and clear the work area of harmful objects like large stones, large branches, etc.. before starting work to avoid accidents.
- Do not run the machine if excessive vibration occurs, stop the machine immediately and rectify the fault.
- Do not use the machine in bad weather or poor visibility, eg in heavy fog.
- Be careful when working near power lines and / or telephone lines.
- NEVER try to remove things that stuck in hedge trimmer whilst it is running!
- Ensure that the tool has stopped before any action is taken.



The machine's original design may not under any circumstances be changed without the permission of the manufacturer. Non-authorized modifications and / or accessories can result in life-threatening or fatal injury to the operator or others.

IMPORTANT!

INSTRUCTION FOR EMERGENCIES

In case of an emergency please dial 112.

Keep cell phone or emergency phone available specially when working alone. First aid kit and fire extinguishers must be kept easily accessible during all work, maintenance and service.

PERSONAL PROTECTIVE EQUIPMENT

Always use suitable protection equipment. Do not wear loose clothing or jewellery while working with the equipment. Long hair should be tied up when working equipment that has moving parts. Use protective gloves as there is a risk of burns if any hot surfaces are touched such as exhaust pipes, and avoid getting oil and petrol on skin. Ear defenders must be worn whilst the engine is running. A helmet and face shield is recommended to use when using the machine.



SURROUNDINGS

Check and make sure that the area is clear of people, children and objects before switching on or using the equipment. Risk of serious personal injury. Be especially careful if children are in the area where the equipment is being use or stored. Check that there are no low-hanging power lines within the work area. Be careful when working on slopes and near ditches.



Children in the area should be supervised.

DANGER!

WARNING LABELS

Make sure that the warning labels are always visible, clean the warning labels if necessary. Do not wash with high pressure washer directly on the warning label. If any part of the decal is worn or label becomes frayed or otherwise unreadable, order new decals..

SYMBOL	EXPLANATION
	Risk zone 15 m
	Warning ejection! Keep distance!
	Warning—Rotating PTO
	Prohibition to stay on the machine
	Warning! Keep off the machine!
	The product is CE marked
	Do not permit anyone to stand under suspended loads

BEFORE USE

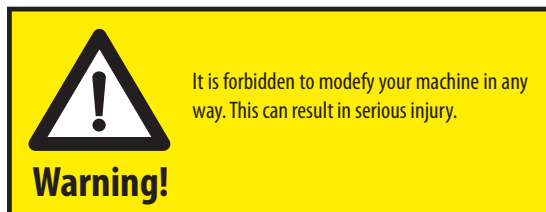
Read the instruction manual carefully. Be sure that you understand the safety information, instruction manual and warning labels. Use common sense when using and use the appropriate personal protective equipment

Always check the performance of the machine combination to be used. Importantly, these harmonize and match in a satisfactory manner. This is to ensure the implement function and your and others' safety.

Visually inspect the gear or the product before use. Fix or replace damaged and worn parts immediately to reduce the risk of injury. Lubricate moving parts and check that all screw-nuts and bolts are tightened. Clearing when necessary.

Learn and remember the correct working methods. Beginners should always keep a low speed, use extreme caution before routine and product knowledge is achieved. The user/customer is responsible to handle the situation correctly. The product should not be taken into use unless it can be done in a safe way for the user.

- Make sure the equipment is correctly mounted and does not come loose.
- Check the work area before starting the operation and remove the underlying objects that may cause any accident.
- Check that all bolts are tight before starting the machine.
- Check all hoses and connections so that they do not leak.



USE / OPERATION

Only people who understand the safety information and instructions in this manual may operate the equipment. Be alert and careful when working with the machine and only use the tool or product in the manner described in this manual. When working with equipment that has moving parts, there is always the risk of injury. Be careful when working with equipment equipped with hydraulic hoses, oil under pressure can penetrate the skin. Seek medical attention immediately if this occurs. Always work alone with the tools that are defined as single purpose tools. Respect the equipment's danger zone.



SAFETY PRECAUTIONS WHEN USING

- It is forbidden to use the machine as a lifting tool.
- It's not allowed to be used for any excavation of some kind or cut other materials that are not described in this manual.
- When working in the dark, the vehicle used must be equipped with rotating warning light and the workplace should be well lit.
- Outriggers should always be installed on the machine when not in use.
- Always check that there are no persons or animals nearby before operating.
- In under no circumstances should anyone be near the machine during operation!
- Adjust speed of the tractor when cutting different materials. The recommended speed when trimming the hedge is 1.5 - 2 km / h.

The mower can be used in different modes:

- Lateral- to cut the side of the hedge
- Lower position for cutting of high or dry grass
- The trimmer can be rotated 180 degrees to cut the other side of the hedge
- Up-lift position for cutting above the hedge.

AFTER USE

- Turn off the trimmer, ensure that the blades have stopped before disconnecting the machine
- Set the machine on the ground, mount outriggers
- Make sure there is no pressure in the system before disconnecting the hydraulic hoses.
- Turn off the tractor and pull the handbrake.
- Unplug the machine from the tractor, make sure that it can not overturn.
- Rinse with water if necessary, but make sure to lubricate all bearings and knives afterwards.

TRANSPORT AND STORING

Make sure there are no people, children and foreign objects around the area before transporting the machine. Always take an extra caution during the transport. Ensure that the product is well secured and that transport brackets are mounted. Always place the load as low as possible. Respect the danger zone even during transport. When lifting the equipment, never go underneath suspended loads. Trailer used for transport should have working brakes.

Always store the machine in a dry place preferably underneath a cover when not in use. Ensure that the product is stable and not likely to tip over. Never let children play where the machine is being stored. Always keep in mind the risk of tipping!

- When storing the machine, it should be cleaned and all bearings and knives lubricated.
- The knife guard should always be fitted when the machine is not in use.

MAINTENANCE AND SERVICE

Ensure that the unit is stable and cannot tip over during maintenance and service. Replace damaged or worn parts immediately to reduce the risk of abrasion. Always perform maintenance, service and inspection, as recommended. Use only original replacement parts or spare parts with equivalent performance to reduce the risk of damage.

- Check all nuts and bolts are tightened after performing maintenance and service. Always test the machine before work is started.
- Always check the condition of the accessories that must be connected to the machine.
- For spare parts: Contact Kellfri Service

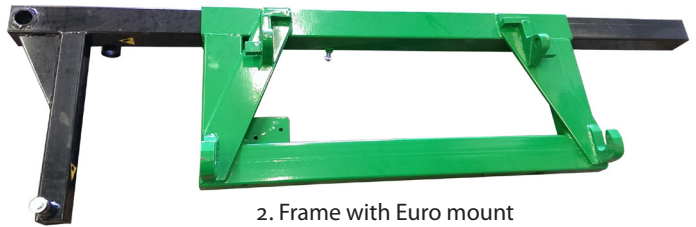
RECYCLING

Disposal of the product, disassemble and transport to the municipality's recycling station. Contact your local authority for further information.

INSTALLATION:



1. Knife boom



2. Frame with Euro mount
for front loader



3. Shaft with cylinder at-
tachment



4. Cylinder



5. Electric valve



6. Switch



7. Hydraulic cylinder



8. Support legs



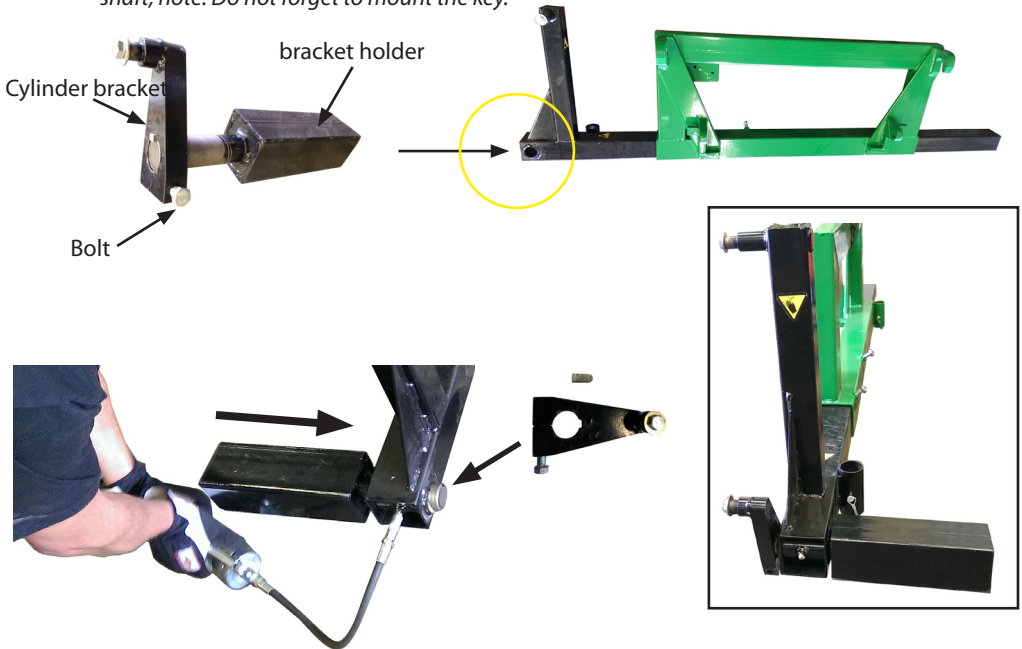
9. Nylon roll



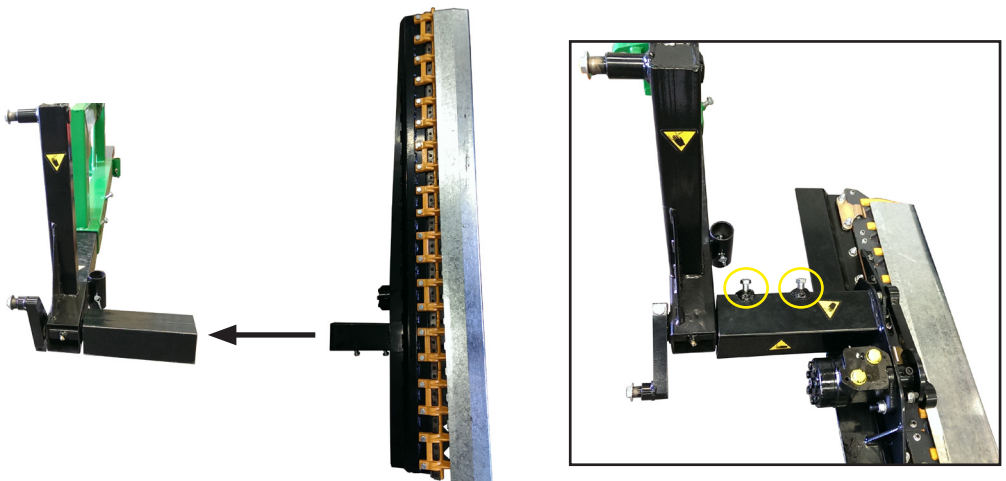
10. Rubber link

Warning! Risk of crushing! Ensure that the machine can not tip over during installation!

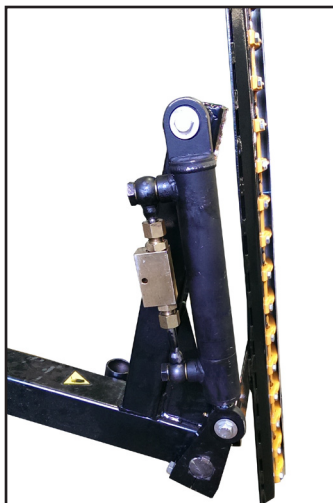
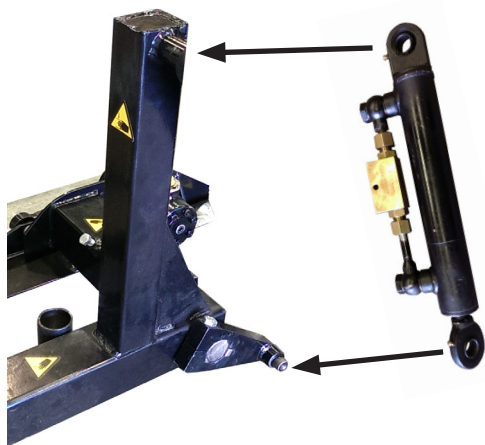
1. *Assembling the knife holder and the cylinder bracket: Loosen the bolt and remove the cylinder bracket from the beam (see photos below), mount the shaft onto the frame, lubricate the bearings to make the assembling of the shaft easier. Then mount the cylinder clamp on the shaft, note: Do not forget to mount the key.*



2. *Knife assembly: Attach the cutting head on the shaft, then tighten all bolts.*



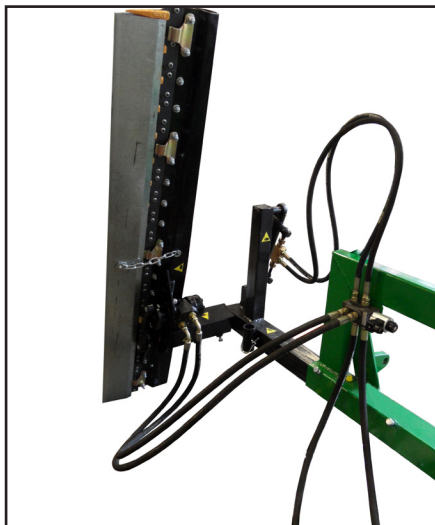
3. *Installation of cylinder: The piston rod is mounted on the bottom bracket.*

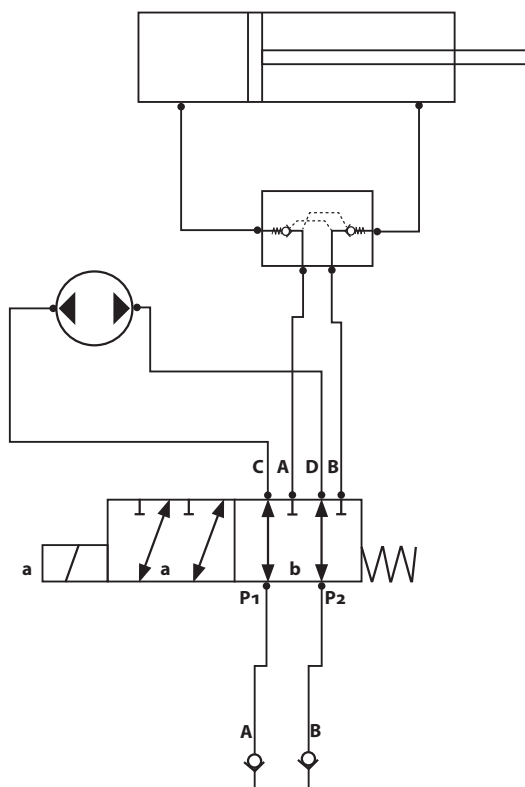
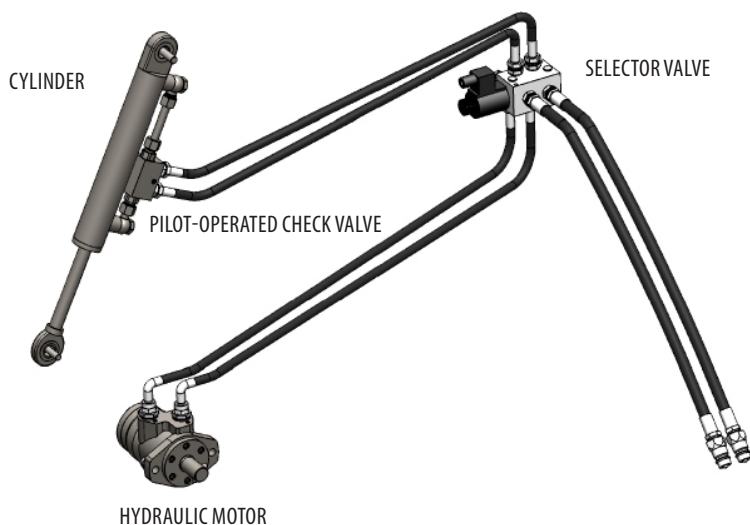


4. *Mount the electric valve to the frame.*



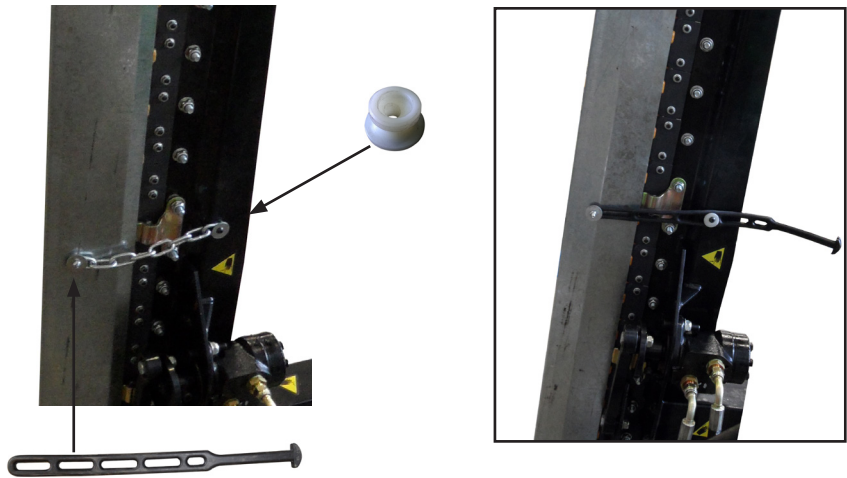
5. *Connect hoses: The hydraulic coupling with 90 degree angle is to be mounted onto the hydraulic motor. Attach the hydraulic hoses according to the diagram.*



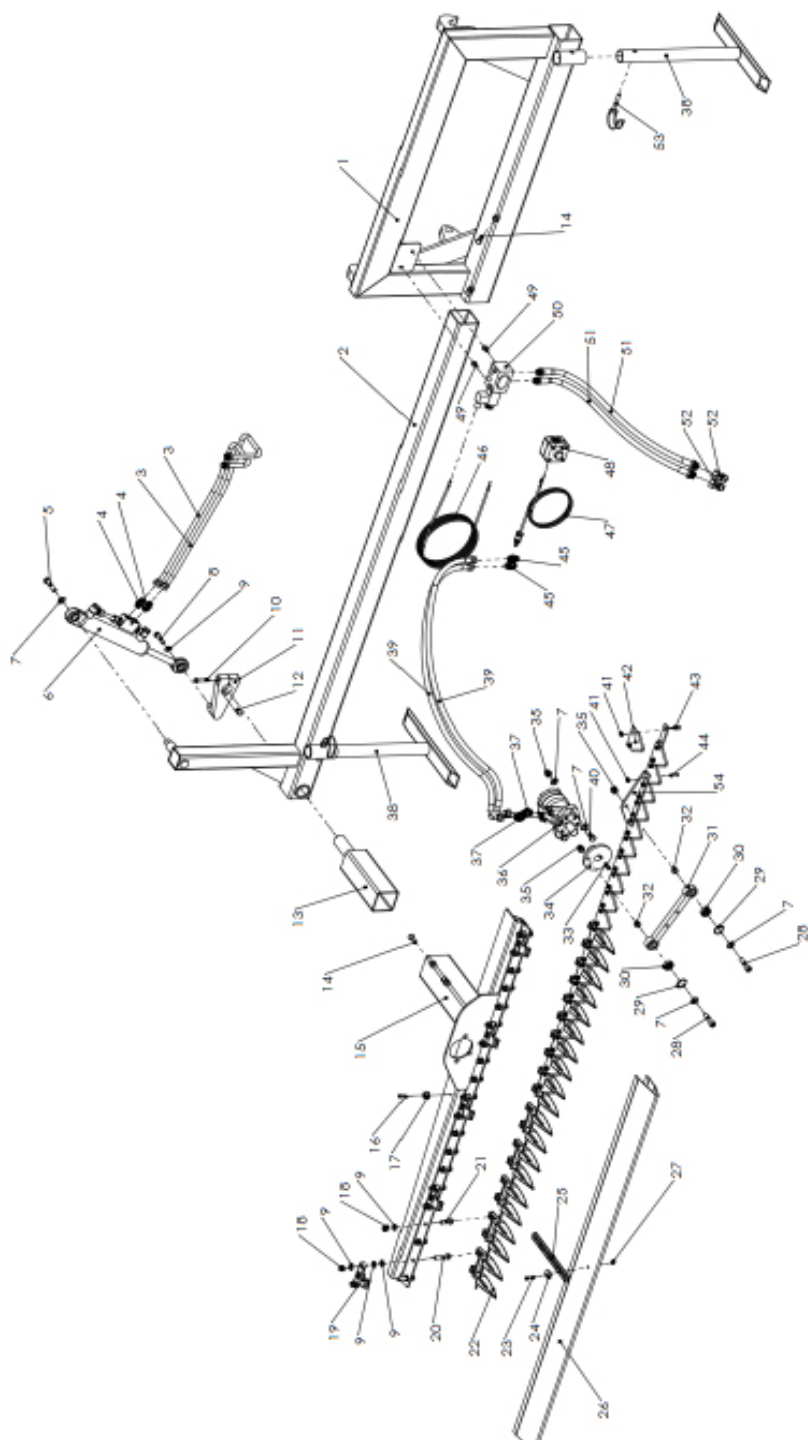


HYDRAULIC CIRCUIT 27-HTFL

6. The blade guard is secured with chains for transportation purposes. Remove the chain and then install a rubber link on the blade guard. Nylon roller mounted on the knife beam.



7. Check all bolts and fittings are tightened. Lubricate all lubrication points with grease; spherical bearings on the cylinder and cylinder bracket.
8. Connect the power cord for the start button on the tractor and test run before the operation begins.
9. Tighten all bolts after one hour of driving!



NO.	DESIGNATION	QTY.	NO.	DESIGNATION	QTY.
1	Frame	1	28	Insexbult M12x50	2
2	Beam	1	29	Snap ring 34.4	1
3	Hydraulic hose - cylinder	2	30	Bearing 6201	2
4	Cylinder koppling	2	31	Shaft - hydraulic motor	1
5	Bolt M12x45	1	32	Bushing	2
6	Cylinder	1	33	Key 8x7x28	1
7	Washer 12	7	34	Wheel	1
8	Bolt M10x45	1	35	Nylock M12	4
9	Washer 12	45	36	Hydraulic engine	1
10	Bolt M12x65	1	37	Coupling	2
11	Cylinder bracket	1	38	Support legs	2
12	Key 10x8x22	1	39	Hydraulic hose - engine	2
13	Square Bars	1	40	Bolt M12x40	2
14	Bolt M10x30	4	41	Flange Nut M6	40
15	Knife boom	1	42	Knife	20
16	Insexbult M6x16	1	43	Insexbult M6x16	34
17	Tensioner -plastic	1	44	Insexbult M6x25	6
18	Nylock M10	20	45	Adapter	2
19	Knife bracket	5	46	Wire the solenoid valve	1
20	Bolt M10x50	10	47	Electric cable	1
21	Bolt M10x35	10	48	Switches	1
22	Knife protection	10	49	Bolt M6x16	2
23	M6x45	1	50	Solenoid Valve	1
24	Large flat washer 10	1	51	Hydraulic Hose	2
25	Rubber link	1	52	Quick Coupling	2
26	Knife protection - steel	1	53	Clamp	2
27	Nylock M6	1	54	Mounting plate	1

SPARE PARTS

ARTIKELNR.	DESIGNATION
R27-HTFL.001	Selector Valve 41427 3/42
R27-HTFL.002	Contact - solenoid valve
R27-HTFL.003	Fixed knife
R27-HTFL.004	Knife
R27-HTFL.005	Knife holder
R27-HTFL.007	Hydraulic engine
R27-HTFL.008	Flywheel for hydraulic motor
R27-HTFL.011	Hydraulic cylinder

We are grateful for your help pointing out any inaccuracies in the Kellfri product delivered to you. Before making a complaint read Kellfris general warranty and sales conditions in our catalog as well as the enclosed User's manual that comes with the machine.

Please fill in the details below and attach photo and other information in order to process your request.

Buyer:	Customer number:
Adress:	Invoice number:
E-mail:	Phone nr:

When was the product delivered?	When was the product taken into operation?	Did the product functioned as it should upon the first operation?
--	---	--

Defect product / part:

.....

Problem description:

.....

.....

Describe the sequence of events:

.....

.....

.....

.....

.....

.....

Other:

.....

.....

Submit Complaint form and photo to:

Kellfri AB

Division of Services : Contact Kellfri retailer

Munkatorpsgratan 6

532 37 Skara

Or e-mail service.

info@kellfri.se

Signature:	Date:
-------------------	--------------

KELLFRI AB

Munkatorpsgratan 6

SE-532 37 SKARA

Phone: +46 (0)511-242 50

Fax: +46 (0)511-168 33

Web

www.kellfri.se

E-mail

info@kellfri.se

Issue: 2014-01-01

WARRANTY TERMS AND CONDITIONS

- | | |
|-----------------------------|--|
| Validity of the warranty | - Kelifri's Warranty is valid 12 months from the date of purchase |
| This warranty replaces | - Compensation for spare parts after acknowledgment that the fault lies on the material or manufacturing defects. |
| This guarantee do not cover | <ul style="list-style-type: none">• Labour costs• Travel expenses• Any modification that the buyer himself has/had made.• Any consequential damages that occurred out of damage to the machine.• Damage due to normal deterioration of the machine, inadequate: service, user inexperience or use of spare parts which are not original.• Wear parts such as hoses, seals, oils, and mechanical belts |

EG-FÖRSÄKRAN OM MASKINENS ÖVERENSTÄMMELSE, ORIGINAL

EC-DECLARATION OF CONFORMITY

According to 2006/42/EC, Annex 2A

Kelifri AB

Munkatorpsgratan 6

532 37 Skara, Sweden

Declares that the machine

Name: Hedge cutter

Type: 27-HTFL

Complies with all applicable provisions of the Machinery Directive 2006/42/EC.

Other equipment must meet the hardware requirements of the Directive



Tina Baudtler, VD
Skara, 2014-08-15

Kelifri AB is constantly working on further developing their products and therefore reserves the right to modify, among other things the design and appearance without notice

Latest version 2015-09-24

CUSTOMER SERVICE

You are always welcome to give your feedbacks, reviews or ask us about our tools and products.

Kelifri AB

Telefon: 0046 (0)511 - 242 50

Fax: 0046 (0)511 - 168 33

E-post: info@kelifri.se



Kelifri®