



Kellfri[®]

23-TV07K TIPPING TRAILER



**CAREFULLY READ THE OPERATING INSTRUCTIONS BEFORE USING THE PRODUCT!
OPERATING INSTRUCTIONS TRANSLATED FROM ORIGINAL**

INTRODUCTION

Thank you for choosing a product from Kellfri AB. Compliance with the general safety instructions, instruction manual and sound common sense will guarantee many years of enjoyment using the product. Kellfri's equipment and products are aimed at self-employed farmers who have stringent performance demands.

PRODUCT DETAILS

A combined forestry and tipping trailer for your ATV. This is the ideal choice for those looking for a trailer that can be used in the forest as well as for transporting items. The length of the trailer can be adjusted and it has removable sides, bogie and mesh headboard. The trailer is supplied with removable bolsters for easier loading and unloading, can be fitted with a tiltable galvanised floor and has a fold-down tailgate and headboard. Galvanised frame, crane and boom. Climbing bogie. The crane boom is adjustable with crane and winch in standard versions. Forestry trailer V07 – trailer without wire crane and winch

AREA OF USE

Intended for transporting timber, but can also be used to transport loose materials such as hay, leaves, single items, earth, etc. in compliance with set load-bearing capability, safety regulations and recommendations.

TECHNICAL DATA	23-TV07K
Width	1,100 mm
Headboard height	550 mm
Weight	283 kg
Length	2,600-3,500 mm
Load capacity	700 kg
Central beam	60 x 60 mm
Wheels	22 x 11-10
Ground clearance	300 mm
Tow bar	50 mm ball
Floor: Length and width (inner dimensions)	2,000 mm x 1,160/570 mm
Delivered with wire crane	Yes

SAFETY INSTRUCTIONS

Before using the equipment or product, and for the safety of yourself and others, you must read the safety instructions and instruction manual and understand their contents. Always make the safety instructions and the instruction manual easily accessible to users of the equipment or product. It is a good idea to read the safety instructions from time to time, both for your own safety and that of others. If the safety instructions or instruction manual gets damaged or in any other way cannot be used, new copies may be ordered from:

Kellfri AB, Munkatorpsgratan 6, SE-532 37 SKARA, Sweden. Tel.: +46 (0)511 242 50

Do not use the equipment or product if you feel ill, tired or are under the influence of alcohol. Do not use the equipment or product if you are taking prescribed medication or drugs, or suffering from severe depression or mental illness. Always comply with general rules of the road and applicable rules stipulated by the Animal Welfare Act. People under the age of 15 and those suffering from mental illness are not allowed to use the equipment.



PRODUCT SAFETY INSTRUCTIONS

Carefully read the instruction manual before using the product.

Compliance with the safety instructions requires that the forestry trailer/tipping trailer is only used as described in these instructions. It is the user's responsibility to read through the instructions and comply with them.

- Read the operating manual for the quad.
- Always check that the performance of the machine combination to be used with the trailer guarantees safety and functionality.
- Never overload the trailer
- Never leave the driver's seat until the brakes on the towing vehicle have been applied.
- The risk area is 15 metres. Only the operator is allowed to be within the risk area while the trailer is in use.
- Under any circumstances are operators allowed to stand under suspended loads.
- Do not leave a loaded trailer parked unsupervised.
- When unhitching the trailer, it must be empty and on a level surface with the trailer wheels secured using suitable brake blocks.
- To stop the trailer moving in the event of an emergency, engage the brakes on the quad.
- Be aware of the crush risk when carrying out winching work.
- As the trailer is not fitted with lights, fit a magnetic rear light or similar where required.
- An SMV sign must be attached when travelling on roads.
- The trailer is fitted with a ball coupling for a 50 mm tow bar eye. Max. pulling force 1,000 kg. Replace the ball coupling after excess wear.
- EU regulations stipulate how fast a rig with a non-brake trailer is allowed to go. Take care to comply with these regulations.

Kellfri is not liable for any modifications, changes or rebuilds carried out by customers!

INSTRUCTIONS FOR EMERGENCY SITUATIONS

In case of emergency, call 112.

Always have a mobile phone or emergency phone available when working alone. A first aid kit and fire extinguisher must be kept in an easily accessible location when carrying out any work, maintenance and service. To perform an emergency stop, turn off the tractor.

PERSONAL PROTECTION

Always use suitable protection equipment. Do not wear loose clothing or jewellery while working with the equipment. Long hair should be tied up when working with equipment that has moving parts. Use protective gloves as there is a risk of burns if any hot surfaces such as exhaust pipes are touched, and avoid getting oil and petrol on skin. Ear defenders must be worn whilst the engine is running. Helmets with ear defenders must be used while working to prevent knocks from the cabin sides and suchlike in uneven terrain. Wear protective boots with anti-slip soles.



WARNING DECALS

Make sure warning decals are always visible and clean them when necessary. Do not use a high-pressure washer directly on the warning decal. If a decal becomes worn or in any other way unusable, order a new set of decals. An SMV sign must be visible and mounted when travelling on public roads.

The forestry trailer is fitted with the following decals:

SYMBOL	EXPLANATION
	Read the operating manual! Before carrying out work Warning! Before maintenance, servicing, connecting and disconnecting the machine, the tractor must be turned off and the ignition key removed.
	Risk zone 15 m Respect the equipment's risk zone! Warning! Risk of crushing! Do not permit anyone to stand under suspended loads.
	Greasing after 10 hours of operation Always use stabilisers—loading/unloading Retighten all bolts and connections
	Warning! Keep off the machine! Warning! Accident risk for children! Children are not allowed in the vicinity of the machine
	The product is CE marked

SURROUNDINGS

Check that the work area is free from bystanders, children and objects before hitching or using the trailer. There is a risk of serious bodily harm. Be extra careful if there are children in the vicinity of the area where the equipment or product is used or stored. Check that there are no low-hanging electrical cables within the work area. Exercise caution when working on slopes and close to ditches. Always work alone with equipment or products that are made for working alone. Remove all rubbish from your work area. Keep work areas clean. Always respect the equipment risk zone.



STEPS TO TAKE BEFORE USE

Carefully read the safety instructions and the operating instructions. Make sure that you understand the safety instructions, operating instructions and warning decals. Use common sense when using the product and suitable personal protective equipment. Always check the performance of the machine combination to be used. It is important that these are in harmony and work satisfactorily together. This is done to ensure the equipment or product work as expected, and to guarantee the safety of yourself and others. Carry out a visual inspection of the equipment or product before use. Repair or replace damaged or worn parts to reduce the risk of injury.

Grease moving parts and check that all nuts and bolts are tightened. Correct if necessary. Learn and remember the correct working method. Beginners must work slowly until they have learned how the machine or product works. Users/customers are responsible for ensuring users can handle the situation. If users feel that the machine is dangerous to use, it should not be used.

Warning! Risk of crushing due to moving parts!

HITCHING THE TRAILER

- Read through the operating manual in its entirety.
- Check the ball coupling on the trailer. Then hitch the trailer onto the towing vehicle.
- Operate and carefully check movements of the equipment. Check the air pressure in the tyres.
Max. air pressure 1.5 bar.



USE

Only those who understand the safety instructions and the operating instructions may use the equipment or product. Exercise caution and care when working with the equipment and only use it in the way described in the operating instructions. There is a risk of crushing when working with equipment that has moving parts. Exercise caution when working with equipment with hydraulic hoses as oil under pressure can penetrate the skin. Immediately seek medical attention if this should occur.

Always work alone with equipment that is made for working alone. Never overload the equipment and respect its risk zone.

Check that the trailer is undamaged before connecting it to the vehicle.

- Loads must be spread evenly across the trailer. Loads sticking out must be well anchored.
- Place the stabilisers on the ground for increased stability when loading.
- Loads sticking out must be well anchored.
- The brakes on the ATV must be engaged when loading and unloading.
- Point the crane arm in the same direction as the wire has to work.
- Calmly and methodically practise the movements used for handling the wire crane.

NOTE: Only tip the trailer on an even surface.

AFTER USE

Wash down the forestry trailer when required.



TRANSPORTATION AND STORAGE

Check that the work area is free from bystanders, children and objects before driving off. Always observe additional caution during transport and moving. Ensure that the equipment or product is well anchored and existing transport lashings are fitted. Always position the load as low as possible. Respect the risk zone even during transport and moving. Do not permit anyone to walk under suspended loads when carrying out lifts. Trailers used for transport should have brakes that work. Always keep the equipment or product on a dry surface, preferably under a roof when not in use. Ensure that the equipment or product is stable and cannot fall over. Never permit children to play at the storage site. Be aware of the tipping risk!

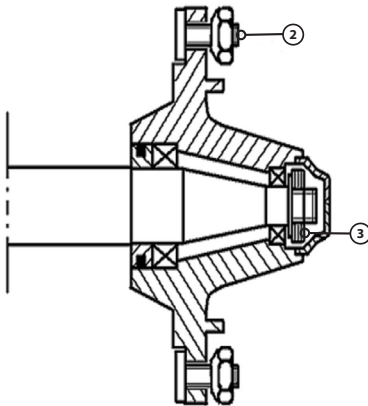
MAINTENANCE AND SERVICE

Make sure the trailer is stable and cannot tip over when carrying out maintenance and service work. Replace damaged or worn parts to reduce the risk of injuries. Carry out maintenance, service and checks in line with recommendations. Only use spare parts with equal performance to reduce the risk of injuries and breakdowns. All repair work and electrical connections must be carried out by a qualified technician.

Check that all nuts and bolts are tightened after maintenance and service work. Contact Kellfri for spare parts. Regularly check the condition of the rig. If cracks, twists, bends, gaps or fatigue are discovered, stop using the equipment and rectify the fault. Worn parts must be replaced.

Never perform welding on the tow bar eye as this may affect its durability.

Service	Interval	Measure
Tyres	Before each use	Check the air pressure in the tyres. It must always at least be the recommended pressure, 0.8 kg
Max. 1.6 bar	Before each use	Check that all cables and hoses are intact.
Wheel nuts	Perform an initial check after 2-3 hours of operation, and subsequently 2-3 times a year.	Retighten all the wheel nuts, 80 Nm
Trailer parts	Regularly, at least 3 times a year,	check by performing a visual inspection of any brakes, lights, SMV signs, tow bar eyes, axles, bogie eyes, hinges and turntable bearings (if installed). Replace worn and damaged parts.
Trailer	After each use	Wash down with clean water if necessary.



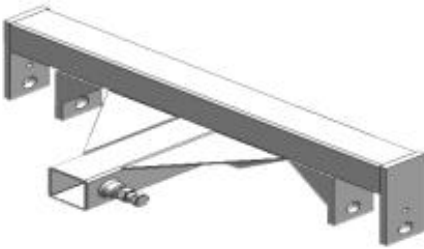
CARE INSTRUCTIONS

- 1. Do not overload the tractor and trailer!
- 2. After wheel replacement, check that the wheel nuts are tightened and repeat after a stable period of operation. The tightening torque must not exceed 80Nm. Use a torque wrench if possible.
- 3. Check that the bearing setting is correct to prevent bearing play and abnormal bearing wear. The bearing setting should preferably be too loose than too tight.

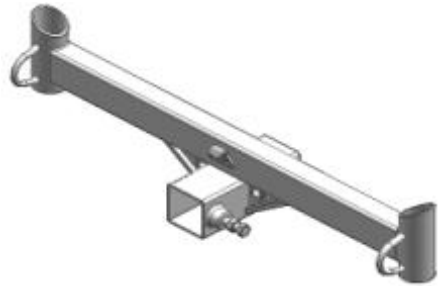
RECYCLING

When scrapping, the equipment should be dismantled and transported to a designated recycling station. Contact your municipality for further information.

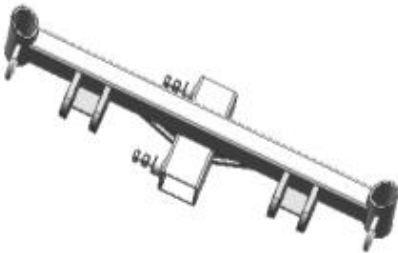
PARTS 23-TV07



Frame (1)



Beam (front) (1)



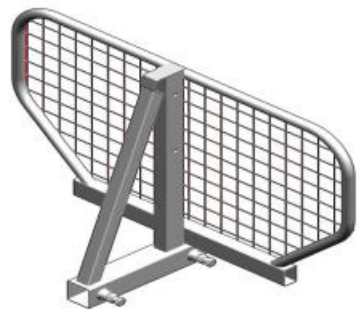
Beam (rear) (1)



Holders (bolsters) (4)



Bolsters (4)



Headboard (1)

PARTS 23-TV07



Bogie axle (2)



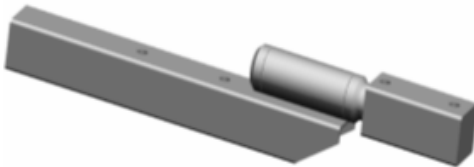
Bogie axle pin (2)



Wheel hub (4)



Axle extension (1)



Tow bar (1)



Ball coupling (1)

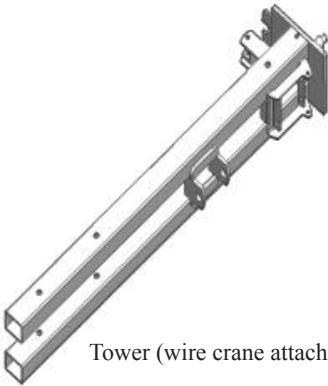
PARTS 23-TV07



Wheels (4)



Hubcaps (4)



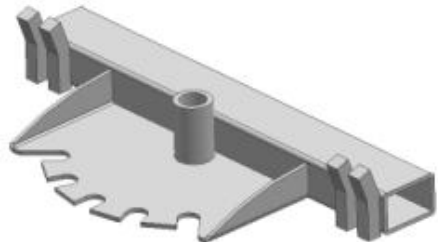
Tower (wire crane attachment) (1)



Lock handle (1)



Wire roll holder (1)



Wire locking hardware (1)

PARTS 23-TV07



Articulated bracket (crane) (1)



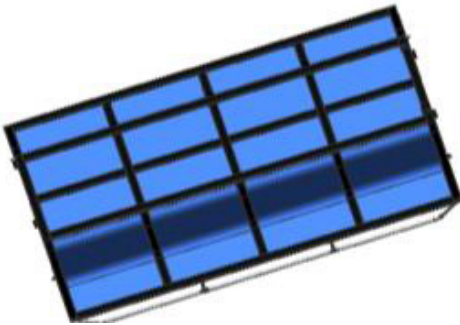
Boom extension (inner) (1)



Link chain (2)



Boom extension (outer) (1)



Floor (1)

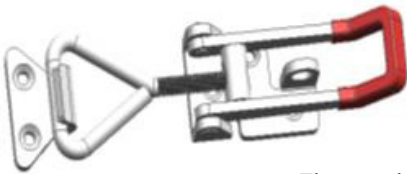


Side (front and rear) (2)

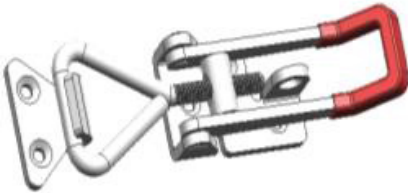
PARTS 23-TV07



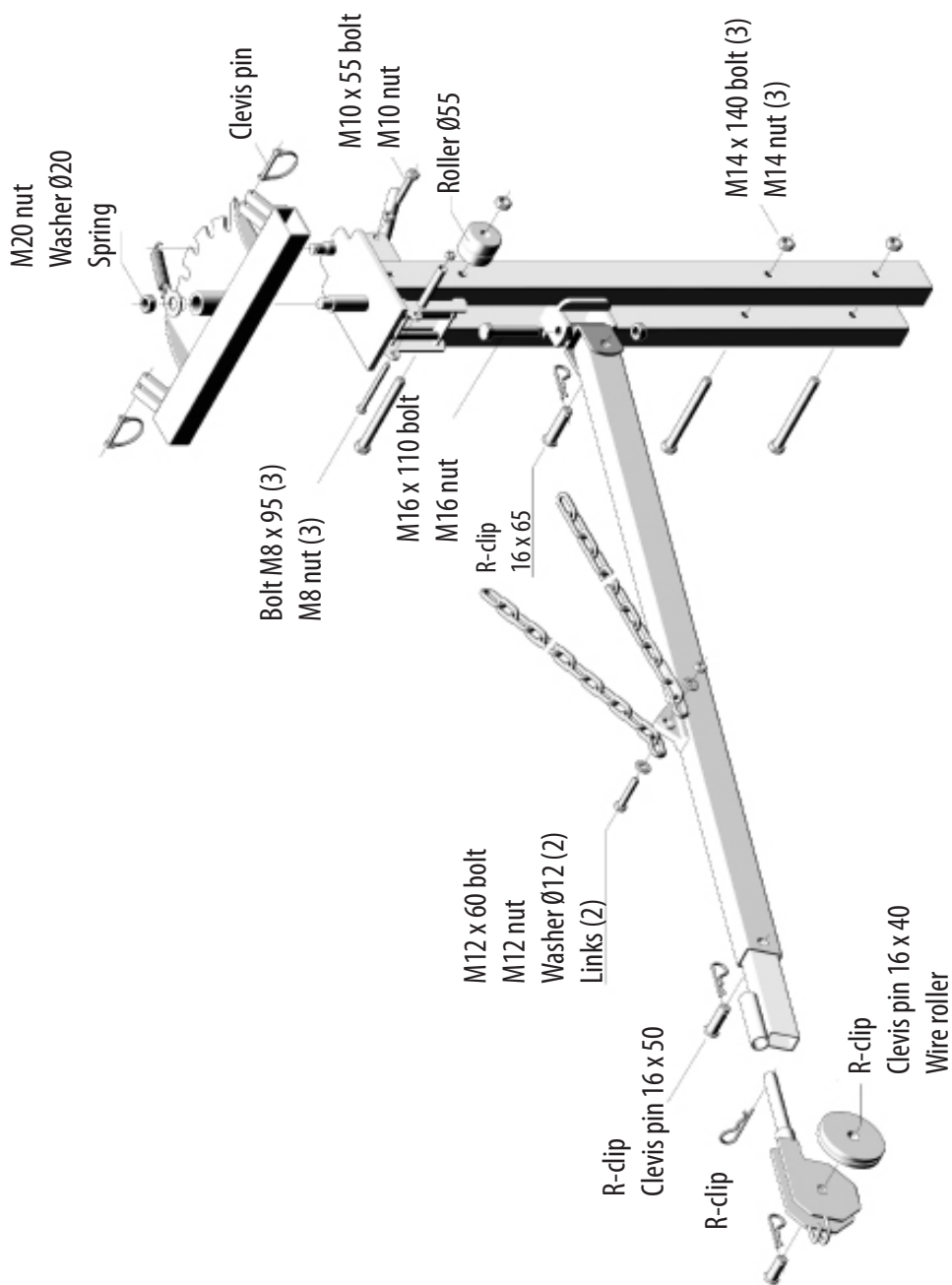
Hinges (2)



Floor catch (small) (4)

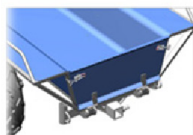


Floor catch (large) (1)



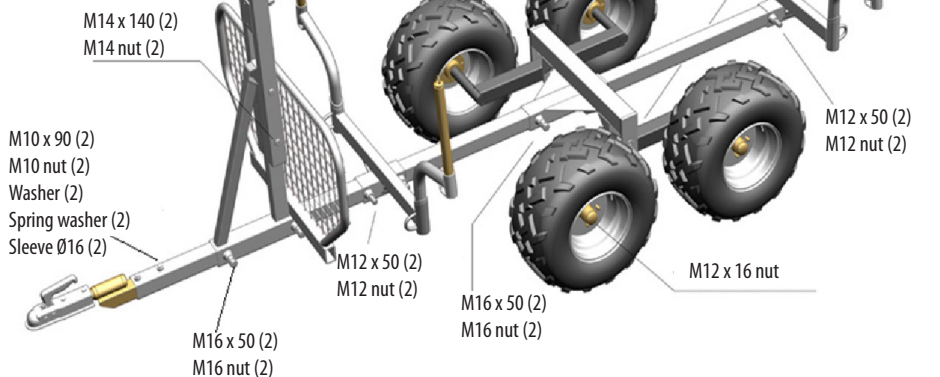


Assemble the trailer as in the illustration.
Warning for risk of crushing!



The trailer floor is fitted as
in the illustration below.

M8 x 30 (2)
M8 nut (2)
Washer (2)
Spring washer (2)
Pin Ø5 x 50 (2)



We are grateful for your help in pointing out any defects in the product supplied to you by Kellfri. Before making a claim read Kellfri's general purchase terms and conditions in our catalogue or on our website www.kellfri.se, as well as in the instruction manual if supplied.

Please provide the details below and append photos as documentation so that we can process your case.

Purchaser:	Customer number:	
Address:	Invoice number:	
E-mail:	Telephone daytime:	

When was the product supplied?	When was the product put into operation?	Was the product working on delivery?
---------------------------------------	---	---

Product/part for which a claim is being made:

Description of fault:

Describe the course of events:

Miscellaneous:

Send the claim form and a photograph to:

Kellfri AB
Service department
Munkatorpsgratan 6
SE-532 37 Skara, Sweden

Or e-mail Service.

info@kellfri.se

Signature:	Date:
-------------------	--------------

WARRANTY TERMS AND CONDITIONS

- | | |
|-----------------------------|---|
| The warranty's validity | - Kellfri's warranty is valid for 12 months from the date of purchase |
| The warranty covers | - Reimbursement for parts replaced after verified material or manufacturing defect. |
| The warranty does not cover | <ul style="list-style-type: none">- Labour costs- Travel costs- Machines on which the purchaser has made/ commissioned modifications.- Any additional costs arising as a result of damage to the machine.- Damage due to normal wear and tear of the machine, substandard servicing, the user's inexperience or use of spare parts that are not original.- Wear parts such as hoses, seals, oil and belts. |

EC DECLARATION OF CONFORMITY FOR MACHINERY, ORIGINAL

In accordance with 2006/42/EG, Appendix 2A

Kellfri AB

Munkatorpsgatan 6

SE-532 37 Skara, Sweden

Hereby declares that the machine

Name: 23-TV07

Type: COMBINED FORESTRY TRAILER AND TIPPING TRAILER

Conforms with all applicable requirements in the Machinery Directive 2006/42/EC.

Other equipment must comply with the Machinery Directive's requirements.



Tina Baudtler, CEO 19 November 2012

Kellfri AB has a policy of continuous product development and therefore reserves the right to make modifications, e.g. to the design and appearance of the product, without prior notice.

CUSTOMER SERVICE

You are always welcome to give feedback or ask us about our equipment and products.

Kellfri AB

Phone: +46 (0)511 - 242 50

Fax: +46 (0)511 - 168 33

E-mail: info@kellfri.se



Latest version: 09 December 2015