

27-HRT160 HEDGE TRIMMER



Kellfri

Read this manual carefully
before using the product!
Translated from the original

INTRODUCTION

Thank you for choosing a product from Kellfri AB. By following general safety information, operating instructions and common sense, you will have many years of enjoyable use of the product. Kellfris equipment and products are aimed to be use by active farmers with high demands on functionality.

PRODUCT INFORMATION

Hedge trimmer with arm for mounting on the tractor’s three-point linkage or for frontloader with pallet forks

you can use the hedge trimmer for trimming hedges, clearing saplings from roadsides and removing protruding branches from trees, for example along field edges where branches can scratch tractors and equipment.

The hedge trimmer is supplied complete with tank, pump and valve block package, plus lever kit with Teleflex wire for controlling the hedge trimmer from inside the cab.

The ‘lever kit’ that you lift into the cab is small and flexible, as the valve is on the hedge trimmer and is controlled by Teleflex wire, which is connected to the valve block package from the levers. The length of the wire is 3 metres, so that it will work on the frontloader or three-point linkage.

The hedge trimmer’s hydraulics are operated by a pump positioned on the tractor’s power take-off. Working speed of the pump is 540 rpm. This means that there is no need for large flows from the tractor, the hedge trimmer is suitable for those with a small tractor with a PTO. When using this hedge trimmer, it is important to remember to adjust the operation to the weight of the tractor. We recommend the use of a *tractor weighing about 1500 kg* so that you can operate the crane in its outermost positions.

The crane and the arm on which the cutting unit sits reach 5.5 metres up into the air and 4.8 metres horizontally outwards from the tractor.

TECHNICAL DATA	27-HRT160
Length	440 mm
Width	1300 mm
Height	2540 mm
Reach	height: 550 cm / horizontal: 480 cm
Working width	1 600 mm
Weight	223 kg
Power requirements	25-40 hk
Recommended driving speed	3-8 km/h
Recommended rpm	540 rpm
Oil volume (tank)	20 L



IMPORTANT! BEFORE USING THE MACHINE
Check and tighten all bolts, nuts and all connections.
Lubricate all lubrication points and check the oil level in the tank as well as if there is any leakage in the hydraulic system before operation.

SAFETY INFORMATION

Before using the product, please read the safety information and instruction manual and understand its contents for your own and others' safety. Always keep the safety information and instruction manual easily accessible to the user of the product. Remember that it may be good for your own and others' safety to read the safety information every now and then. If the instructions manual is damaged or otherwise unusable, please contact and order a new one from: Your retailer

The general safety instruction is also available from Kellfris website: www.kellfri.co.uk

Do not use this equipment if you are feeling sick, tired or in influence of alcohol. Nor if you are under the influence of strong medications or drugs, suffering from strong depression or severe mental illness. Always follow the general traffic rules and regulations and the rules of the Animal Welfare Act. Persons under 15 years old and people with mental illness may not use these product.



WARNING!

The machine's original design must not under any circumstances be changed without the permission of the manufacturer. Unauthorized modifications and / or accessories can result in life-threatening or fatal injury to the operator or others.

PRODUCT SAFETY INFORMATION

Kellfris pasture topper is designed to operate efficiently at 540 rpm. Make sure the PTO is set to 540 rpm. The machine may only be used to cut hedges, bushes and grass. In addition, the machine should only be used with a suitable tractor (see product information) and operated by a suitable PTO shaft. All other use is strictly prohibited.

The user of the machine should understand the contents of this manual before use, service and installation of equipment to the tractor and all other relevant measures. Never wear jewelry, loose clothing, ties, scarves, belts, unbuttoned jackets that can get caught in moving parts.

Always wear approved clothing that complies with the provisions of accident prevention purposes, such as non-slip shoes, hearing protection, goggles and gloves. Wear a jacket with reflective stickers on the equipment used near public roads.

Contact your dealer, health authority or the nearest equivalent authority for information about the current safety regulations and special provisions to guarantee the personal security.



Always disengage the PTO shaft, Turn off the tractor engine and apply the parking brake before adjustment is performed on the machine.



Never put your hands or feet near the machine without stopping the implement and the tractor engine. The rotors may continue to rotate for up to 1 minute



WARNING!

Never use a tool or product with defective safety equipment.

- Never leave the equipment with the tractor engine running. Turn off the engine and apply the parking brake when you leave the piece of equipment, even for a short while.
- Never leave the gear retracted. The hydraulics can lose pressure and cause the implement to fall down.
- Make sure that all guards are fitted correctly and cannot come loose.
- The PTO shaft must be protected throughout its length. Make sure to anchor the safety chain well.
- Only you who is driving the tractor shall be in the vicinity of the machine during work. No one is allowed to stand underneath a suspended load
- Check before driving that no rocks are sticking up on the field, or lying objects that can be thrown out while operating.

Warning symbols identify important safety aspects in this manual to help you and others avoid hazards and accidents. When using the machine: Take extreme caution!



Danger!

This symbol indicates that a serious accident will occur if the instructions in the manual is not followed. The accident resulting in serious injury, possibly death or serious property damage.



Warning!

This symbol indicates that an accident will occur if the instructions in the manual is not followed. The accident resulting in serious injury or property damage.



careful!

This symbol indicates that an accident could occur if the directions is not followed. The accident resulting in personal injury or property damage.

NB!

NB! indicates the potential for the breakdown of the regulations is not followed.

When using the machine in a company, the employer has the responsibility to ensure the user of the machine has theoretical and practical knowledge of the machine and the operation is done safely. Follow the country's Health and Safety regulation. For more information, contact your Health and Safety Executive.

PERSONAL PROTECTION

Always wear suitable clothing and footwear. Do not wear loose clothing or jewelry when using the machine. Remember to put up long hair when operating rotating machines. Wear protective gloves, to prevent risking burns on contact with hot surfaces such as exhaust system, and to avoid oil and gasoline on the skin. Hearing protection should be used when the engine is running.



SURROUNDINGS

Make sure your working area is clear from people, children and objects before installing and using the machine. Risk of serious injuries can occur during operation.

Take an extra caution when children are in the area where the equipment/ product is being use or stored. Check the area for low hanging electrical wires. Be careful when working on slopes and near ditches.

Always work alone with single - purpose equipments/products. Never have junk lying in your area. Keep working areas clean. Always respect the risk zone.



IN CASE OF EMERGENCIES

In case of an emergency please dial 112.

Keep cell phone or emergency phone available specially when working alone. First aid kit and fire extinguishers must be kept easily accessible during all work, maintenance and service.

WARNING LABELS

Make sure that the warning labels are always visible, clean the warning labels if necessary. Do not wash with high pressure washer directly on the warning label. If any part of the decal is worn or label becomes frayed or otherwise unreadable, order new decals.

SYMBOL	EXPLANATION
	Read the instruction manual! Before starting the operation.
	Caution! Before maintenance, service, connection and disconnection of the machine, the tractor engine must be switched off and the ignition key removed. Risk zone 15 m. Warning ejection! Keep distance!
	Rotating Blades
	- Warning leaking hydraulic fluid!!
	- Prohibition to be on the machine - Warning! Risk of crushing behind the tractor when connecting and disconnecting the implement. No person is allowed nearby when connecting and disconnecting the machine.
	- Tighten all bolts, nuts and fittings before use. - Lubrication
	The equipment is CE-marked
	- Warning! No one is allowed to stand under suspended load - Keep away
	NEVER allow anyone to be on the machine! The machine is designed for solitary work

BEFORE USE

Read the safety information and instruction manual carefully. Be sure you understand the safety measures, instruction manual and warning labels. Use common sense when operating the machine and use appropriate personal protective equipment.

Always check the performance and the machine combination that are used. It's highly important these matches in a satisfactory manner. This is to ensure the product or the function and most important yours and others safety. Do visual inspection of equipment or product before use. Fix or replace damaged or worn parts immediately to reduce the risk of injury. Lubricate moving parts and check that all screw-nuts and bolts are tightened.



Warning!

For safety, this product should only be used in the manner described in this manual. The user is responsible for the instruction to be read through and followed.

Learn and remember the correct working methods. Beginners should always keep a low speed, use extreme caution before routine and product knowledge is achieved. The user/customer is responsible to handle the situation correctly. The product should not be taken into use unless it can be done in a safe way for the user.

Read the tractor's manual before connecting machine.

WORKSTATION: The driver must remain in the driver's seat during the the entire operation. If the operator need to leave the tractor, the PTO must be disengaged, the tractor engine shut off and the parking handbrake must be applied.



NEVER RUN THE HYDRAULICS WHEN THE TRACTOR IS TURNED OFF

What to consider when operating a machine with the PTO shaft

The transmission gearbox is protected by both the drive shaft and the shear bolt. All protection should be effective and in good condition. If protections condition is poor or worn, the protection should be replaced before implement is used.



If the PTO shaft is not properly protected, this can cause death because it can catch parts of the body or clothing and cause life-threatening injuries.

Make sure the safety chain is properly anchored to the PTO-shaft and that the PTO shaft is protected over its entire length. Ensure that PTO shaft spins easily inside the protective tube. Hold the spline groove clean and well lubricated so that the drive shaft can be connected easily.

Read PTO shaft manual adjustment and use of PTO shaft.

RISK RISKS AND HAZARDS OF USE OF MOWING MACHINE

Risk of crushing

Bystanders may be injured when the machine is lowered to the cutting position. The machine has crushing points around the hinge areas and between the three-point hitch mount and the main body.

Rotating blades

All persons will be at risk of injury if they stick out their hands or feet under the machine when it is lifted from the ground and the blades are rotating.

Risk of pinching or risk of trapping body parts

This risk is common in transmission devices such as belt drives, gears and rollers. Ensure that all guards are fitted correctly.

Risk during disengaging of the machine

The heavier the rotating part is, the longer it will continue to rotate after the drive has been switched off. This feature is called "free-wheeling". Rotating blades and other components, such as drive shafts, etc. will continue to spin after the drive has been disconnected. Damages:

- When the operator releases the equipment, and try to clean or adjust the machine before the components have stopped rotating.
- When the shear bolt in the protective device in the power take breaks and rotors still spinning while the PTO has stopped. Operator's awareness is the key to safety around rotating parts. Do not raise the machine while the blades are rotating.

Risk of ejecting objects

Machines that mows throws out material while driving. Foreign objects such as rocks, sticks and other debris can get into the machine and ejected with tremendous speed. Cover the sides and the front prevents these objects to be thrown out but it does not always guarantee that the guards catch everything that is thrown out.

Bystanders or animals that stand in the way of the projected object can be seriously damaged. Never bystanders within the vicinity of the machine. Respect the machine's danger zone.

Danger zone 15m!

Noise

Please note that the machine is normally used outdoors and that the position of the operator is in the driving seat of the tractor. It is advisable to read the regulations specified in the tractor manual and maintenance instructions.

The sound pressure level exceeds 70 dB during operation. Hearing protection should be used while driving.

Accidents involving slips and falls

Accidents involving slips and falls often happens as the result of:

- Slippery surface
- Uneven steps and platforms

The potential for slip-and-fall accidents can be significantly reduced by using good judgment. All unprotected rotating machinery is a potential for accidents. Damage usually occurs when loose clothing or long hair caught and wrapped around rotating parts such as transmission shafts or drive shafts on the machine. Make sure all guards are fitted.

Drive safely on public roads

Always follow traffic safety on public roads and follow the rules applies for driving tractor with towed equipment gear on public road.

Make sure reflectors, warning and / or warning flag that indicates protruding equipment is mounted on the machine or tractor. These indicators must be installed properly and must be visible and easily seen by the driver of the second vehicle.

Spectators must not lean on or climb on the machine during transport or during work.

NEVER allow anyone to ride on the machine!

The maximum transport speed should not exceed 20km /h

OPERATION

Only people who understand the safety information and instructions in this manual may operate the equipment. Be alert and careful when working with the machine and only use the equipment or product in the manner described in this manual. When working with equipment that has moving parts, there is always the risk of injury. Be careful when working with equipment equipped with hydraulic hoses ,oil under pressure can penetrate the skin. Seek medical attention immediately if this occurs. Always work alone with the equipments that are defined as single purpose equipment. Never overload the implement. Respect the equipment's danger zone.



SAFETY PRECAUTIONS DURING OPERATION

- It is forbidden to use the machine as a lifting instrument.
- It should not be used for excavation of any kind or cutting other materials than described in this manual.
- Before operation, make sure that the PTO shaft is correctly mounted and cannot come loose during operation.
- When working in the dark, the vehicle used must be equipped with a rotating warning lamp and the workplace must be well lit.
- Support legs must be use when the machine is parked or not in use.
- Always check that there are no people or animal nearby before operating the machine
- Under no circumstances may anyone be in the vicinity of the machine during operation!
- Adjust the speed of the tractor when cutting different materials. Recommended speed when cutting a hedge is 1.5 - 2km / h.
- Using the machine or a long period of time can lead to accidents due to the operator losing concentration. Take regular breaks to prevent fatigue and thus accidents.
- The machine is wider than the tractor when the arm is folded out, be precocious when driving on a public road.
- Never let an inexperienced person handle the machine without supervision. Make sure that the person driving the machine is aware of all safety measures and risks during operation and when connecting and disconnecting the machine
- Do not connect the machine unto the tractor if the tractor is not working properly.
- Only connect the machine to a tractor with approved rollover protection
- The machine should be use during daytime when you have a clear overview of your work area
- Adapt the driving speed during operation, drive at the speed you feel you have control over the machine.
- Always stop the machine when passersby is closer than 20m.
- Inspect the work area carefully prior to driving. High grass / weeds can hide or cover junk or other debris.
- Do not make sharp turns, turn off the knives when turning and the arm is in the highest position.
- The field of vision deteriorates when an implement is connected to a tractor. Set all mirrors so that you have a good overview of your work area.
- Use ballast if necessary to move the center of gravity in the center.
- **WARNING!** Make sure there is enough swing space for the machine when the arm is to be folded out or when turning the arm.
- When the pallet fork brackets are used during operation, ensure that the machine is stable on the pallet forks and can not come loose while driving. Tighten out the pallet forks so that it does not tip back and forth or laterally.

USE

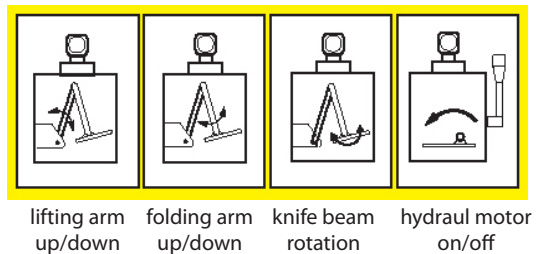
Attach the machine to the tractor's 3-point lift, make sure it is well-attached
Connect the pump to the PTO, make sure it can not loosen and all the hoses are not bent or caught in any rotating parts of the tractor or machine.

The 'lever kit' that you lift into the cab is small and flexible, as the valve is on the hedge trimmer and is controlled by Teleflex wire, which is connected to the valve block package from the levers. The length of the wire is 3 metres, so that it will work on the front loader or three-point linkage.

When using the hedge trimmer, it is important to adapt the driving speed according to the weight of the tractor. It is recommended that the machine should be connected to a tractor weighing approximately 1500 kg in order to be able to operate the crane in its outermost positions.



LEVER FEATURES



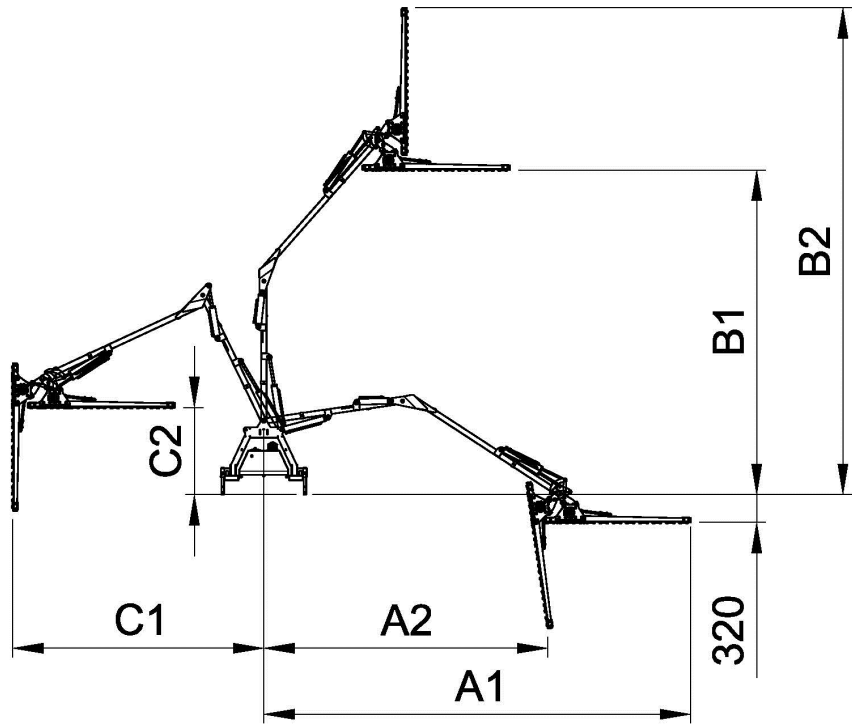
The mower can be used in different modes:

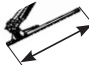





- Sideways - to cut the side of the hedge
- Lower position for cutting high or dry grass
- The mower can be rotated 180 degrees to cut the other side of the hedge
- Above mode to cut above the hedge.

AFTER USE

Switch off the trimmer, ensure that the knives have stopped before disconnecting the machine. Set the machine to the ground, mount the support legs. Make sure there is no pressure left in the hydraulic system before disconnecting hydraulic hoses. Switch off tractor and pull the handbrake. Disconnect the machine from the tractor, making sure it can not overturn. Rinse off with water if necessary, but make sure to lubricate all layers and knives afterwards.

35-HTR160 TECHNICAL DATA



						A1	A2	B1	B2	C1	C2	
CM	MIN.	MAX.	KGS	L	RPM	°	°	°	CM	CM	CM	KGS
160	25	40	1500	20	540	480	320	370	550	280	100	300

TRANSPORT AND STORAGE

Check that the area is free of persons, children and objects prior transportation. Always take precaution when transporting and moving the machine. Make sure that the implement or product is well anchored and that existing transport safety lock are fitted. Always place the load as low as possible. Always have the risk zone in mind when transporting and moving the machine. In case of lifting, nobody is allowed to stand under suspended load. Trailers used for transport should have functional brakes.

Always store the machine or product in a dry place, preferably under roof when not in use. Make sure that the implement or product is standing steady and there is no risk for it to tip over. Never allow children to play where the machine is stored. Keep in mind the risk of tipping! When storing a machine, it should be cleaned and all bearings and knives are lubricated.

MAINTENANCE AND SERVICE

Make sure the implement is stable and there's no risk of falling over during maintenance and service. Replace damaged and worn parts immediately to reduce the risk of machine failure and injuries. Perform maintenance, service and inspections as recommended. Use only spare parts with equivalent performance to reduce the risk of damage and failure.

Regularly check the condition of the machine. Retighten bolts and other nuts as needed. If cracks, twisting, bending or wear are detected, stop the operation and rectify the error. Avoid using the machine at lower temperatures more than -20°C and higher temperatures than $+30^{\circ}\text{C}$. Check that all bolts and nuts are tightened after maintenance and service. Always test the machine before starting the operation. Take great care when repairing a machine. If the ladder is to be used for repair or maintenance, ensure that it is stable.

Avoid burns, wait until the machine has cooled enough before repair or maintenance is carried out, wear protective gloves.

Make sure there is no pressure left in the system before repair or maintenance is performed on the machine.

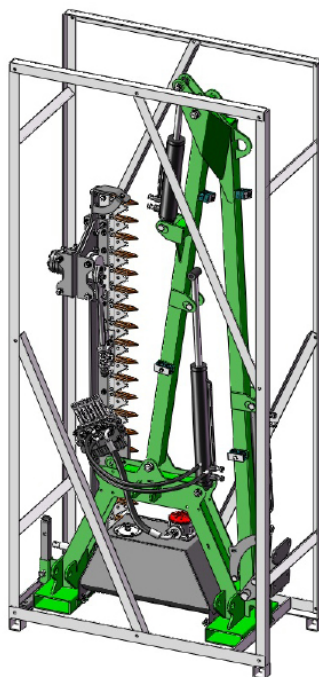
OIL
First oil change after 30 hours
There after once a year
OIL FILTER
New machine - Replace after 30 hours
After every 100 hours or every time the oil is changed once a year
LUBRICATION OF JOINTS
Lubricate regularly, at least 2 times a year or every time service / maintenance is performed

For ordering spare parts : *Contact Kellfri Service*

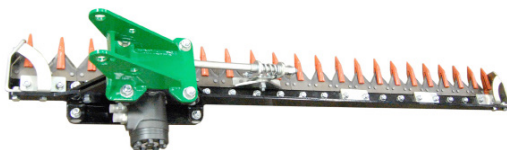
RECYCLING

Disposal of the product, disassemble and transport to the municipality's recycling station. Contact your local authority for further information

ASSEMBLY

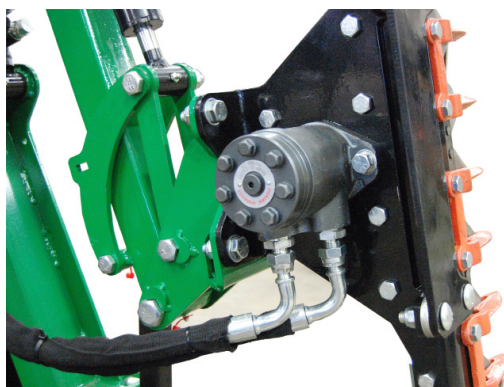
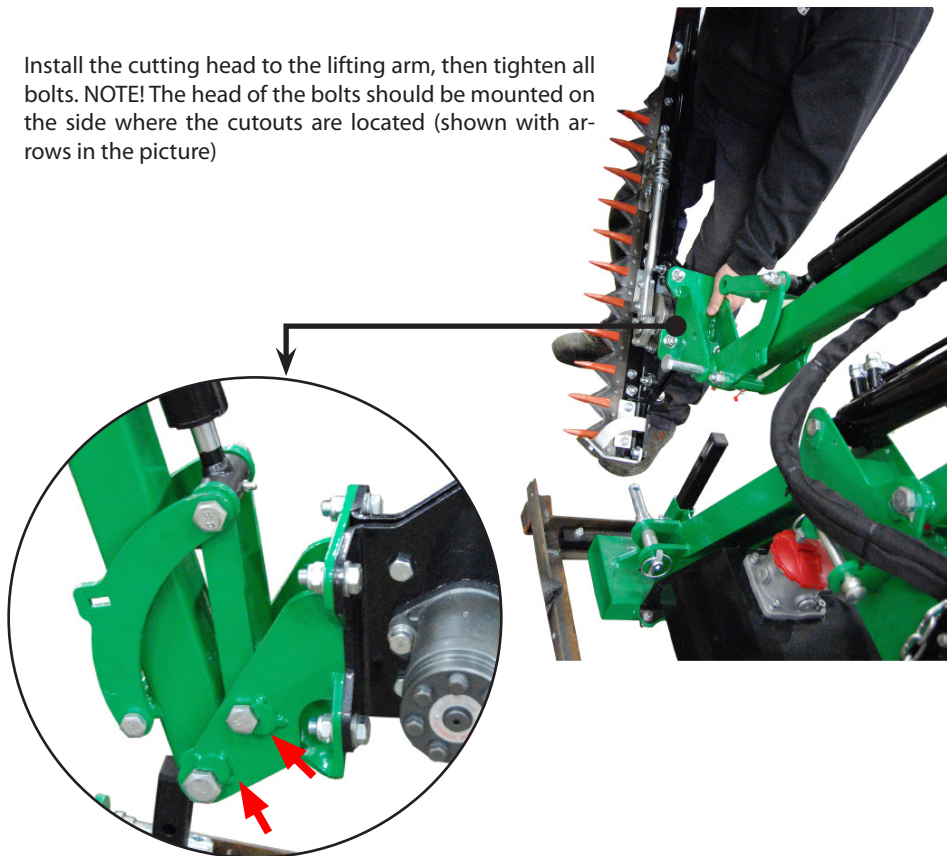


Packaging measurement: LxWxH
1100x540x2440 mm



Warning! Risk of crushing! Make sure that the machine does not tip over during assembly! The machine is delivered partly assembled. Use appropriate lifting instrument when lifting the machine from its packaging box. make sure that the machine is steady and cannot tip over. Remove all packaging material and transport locks and prepare all parts for assembly

Install the cutting head to the lifting arm, then tighten all bolts. NOTE! The head of the bolts should be mounted on the side where the cutouts are located (shown with arrows in the picture)



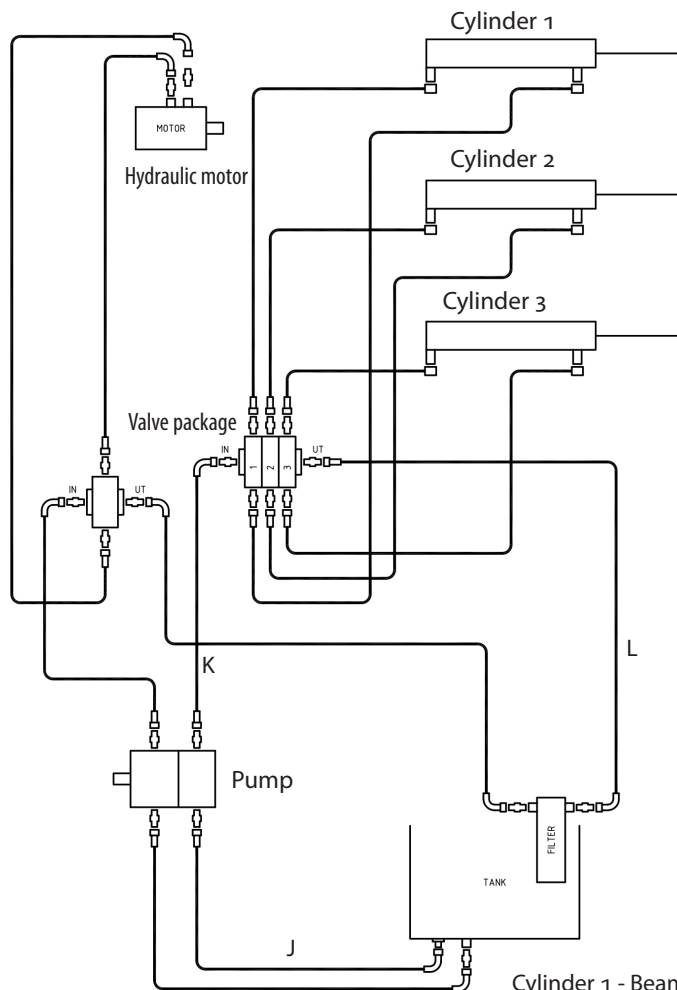
Then connect the hydraulic hoses on the hydraulic motor



Check that all hydraulic couplings and hydraulic hoses are intact, tighten the connections if necessary. Fill the oil tank with hydraulic oil approximately 20L.

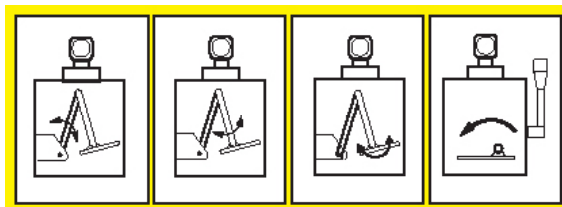
Attach the machine to the tractor's three point hitch and connect the pump to the PTO. Turn on the machine and run all cylinders to its end positions. Check the oil level in the tank and top up if needed.

HYDRAULIC DIAGRAM



Cylinder 1 - Beam (R35-HRT160.081)
 Cylinder 2 - Folding arm (R35-HRT160.087)
 Cylinder 3 - Bom cylinder (R35-HRT160.075)
 Hydraulic motor
 Hydraulic tubes - J,K,L

LEVER FEATURES



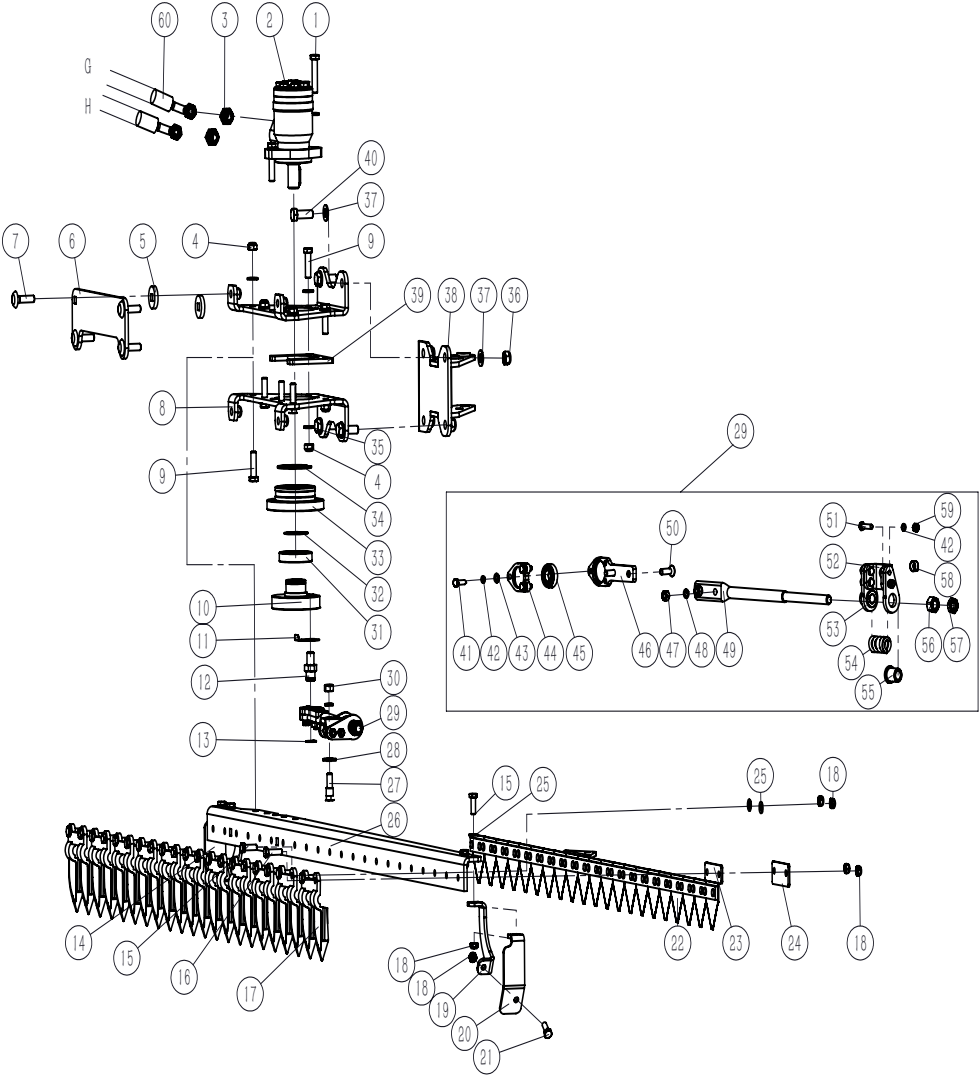
lifting arm
up/down

folding arm
up/down

knife beam
rotation

hydraulic motor
on/off

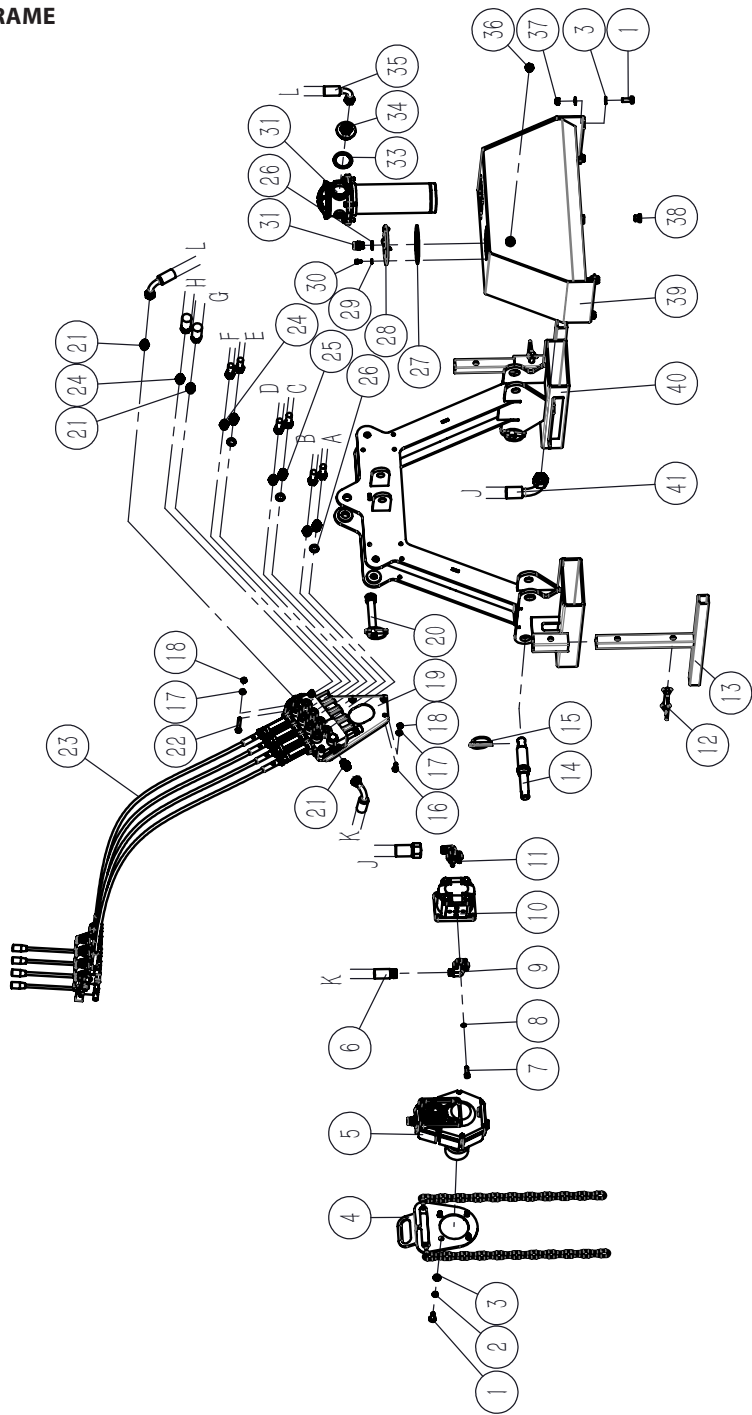
CUTTING HEAD



No	Description	Qty
1	Bolt M12x60	2
2	Hydraulic motor (<i>BMP502AD</i>)	1
3	Oil pipe connector	2
4	Nut M12	10
5	Square hole washer	2
6	Connection plate	1
7	Bolt M12x45	4
8	Hydraulic motor support plate	2
9	Bolt M12x45	6
10	Flywheel	1
11	Locking washer	1
12	connecting rod shafts	1
13	Ring 20	1
14	Protection palte (L)	1
15	Bolt M10x30	16
16	Bolt M10x35	10
17	Knife guard	11
18	Nut M10	32
19	Reinforcing plate	2
20	Protection palte (R)	1
21	Bolt M10x25	10
22	Knife set	1
23	Base plate	5
24	Press plate	5
25	Washer10	28
26	Knife guard fixing plate	1
27	Hinge pin	1
28	Washer 16	8
29	Connecting rod combination	1
30	Nut M12	1

No	Description	Qty
31	Bearing 6009	1
32	Ring 45	1
33	Bearing seat	1
34	Ring 75	1
35	Washer 12	16
36	Nut M14	5
37	Washer 14	9
38	Hitch frame	1
39	Seperator	1
40	Bolt M14x40	4
41	Bolt M8x25	6
42	Spring washer 8	17
43	Washer 8	12
44	Connecting rod end cover	1
45	Bearing 6004	1
46	Connecting rod end	1
47	Nut M10	2
48	Spring washer 10	6
49	Connecting rod	1
50	Screw M10x35	2
51	Bolt M 8x30	4
52	Hinged joint folded plate	1
53	Side plate	2
54	compressed spring	1
55	Flange	2
56	Nut M16	1
57	Nut M16	1
58	Wrapped bushesP18×16×10	1
59	Nut M8	4
60	Oil hose(Valve to motor)	2

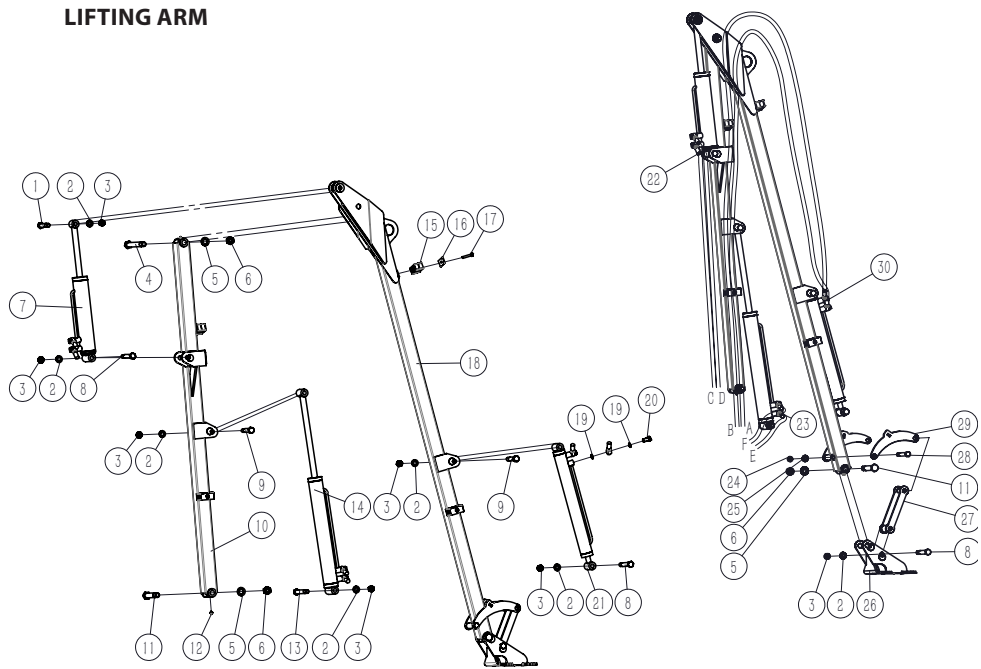
BASE FRAME



No	Description	Qty
1	Bolt M10x25	10
2	Spring washer 10	6
3	Washer 10	28
4	Chain hanging plate	1
5	step-up gear box	1
6	Oil hose (pump to valve)	1
7	Screw M8x25	6
8	Spring wahse 8	17
9	Motor connector for oil in-out	1
10	Gear pump	1
11	Gear pump connector for oil in-out	1
12	D-square cotter 12x70	2
13	Supporting leg	2
14	Lower suspension pin shaft	2
15	Lock pin $\Phi 12$	3
16	Bolt M8x25	6
17	Washer 8	15
18	Nut M8	6
19	Valve supporting plate	1
20	Upper suspension shaft	1
21	Oil hose connector	4
22	Bolt M8x60	3
23	Quadruple remote control	1
24	Oil hose connector	4
25	throttle joint	2
26	bonded washer 3/8	3
27	Rubber gasket	1

No	Description	Qty
28	Oil tank cover	1
29	Washer 6	4
30	Screw M6x10	4
31	Air plug G 3/8	1
32	Return oil filter	1
33	bonded washer 42	1
34	Oil filter connector	1
35	Oil hose (valve to oil filter)	1
36	Oil level A10	1
37	Nut M10	32
38	Plug	1
39	Oil tank	1
40	Base frame	1
41	Oil hose(oil tank to pump)	1

LIFTING ARM



No	Description	Qty
1	Bolt M16x90	1
2	Washer16	8
3	Nut M16	7
4	BOLT M20X190	1
5	Washer20	3
6	Nut M20	3
7	Cylinder for small arm	1
8	Bolt M16x120	3
9	Bolt M16x100	2
10	Big arm	1
11	Bolt M20x130	2
12	Oil cup M6	4
13	Bolt M16x130	1
14	Cylinder for big arm	1
15	Double pipe clamp	4

No	Description	Qty
16	Presson plate	4
17	Bolt M 8x45	4
18	Small arm	1
19	bonded washer 14	12
20	Hinged boltsM14x1.5	6
21	Swing arm cylinder	1
22	Oil hose(valve to small arm)	2
23	Oil hose(valve to big arm)	2
24	Nut M14	5
25	Washer 14	9
26	Hitching frame	1
27	push-pull rod	1
28	Bolt M14x120	1
29	Swing arm	1
30	Oil hose(valve to swing arm)	2

We are grateful for your help pointing out any inaccuracies in the Kellfri product delivered to you. Before making a complaint read Kellfris general warranty and sales conditions in our catalog as well as the enclosed User's manual that comes with the machine.

Please fill in the details below and attach photo and other information in order to process your request.

Buyer:	Customer number:	
Adress:	Invoice number:	
E-mail:	Phone nr:	

When was the product delivered?	When was the product taken into operation?	Did the product functioned as it should upon the first operation?
--	---	--

Defect product / part:

.....

Problem description:

.....

Describe the sequence of events:

.....

.....

.....

.....

.....

.....

.....

Other:

.....

.....

Submit Complaint form and photo to:

Kellfri AB

Division of Services : Contact Kellfri retailer

Or e-mail service.

info@kellfri.se

Signature:	Date:
-------------------	--------------

KELLFRI AB
Munkatorpsgatan 6
SE-532 37 SKARA
Phone: +46 (0)511-242 50
Fax: +46 (0)511-168 33

Web
www.kellfri.se
E-mail
info@kellfri.se
Utgåva: 2014-01-01

WARRANTY TERMS AND CONDITIONS

Validity of the warranty	- Kellfri's Warranty is valid 12 months from the date of purchase.
This warranty replaces	- Compensation for spare parts after acknowledgment that the fault lies on the material or manufacturing defects.
This guarantee do not cover	<ul style="list-style-type: none">• Labour costs• Travel expenses• Any modification that the buyer himself has/had made.• Any consequential damages that occurred due to damage to the machine.• Damage due to normal deterioration of the machine, inadequate: service, user inexperience or use of spare parts which are not original.• Wear parts such as hoses, seals, oils, and mechanical belts

EC-DECLARATION OF CONFORMITY, ORIGINAL



According to 2006/42/EC, Annex 2A
Kellfri AB
Munkatorpsgratan 6
532 37 Skara, Sweden

Declares that the machine

Name: 35-HRT160

Type: Hedge trimmer

Complies with all applicable provisions of the Machinery Directive 2006/42/EC.
Other equipment must meet the hardware requirements of the Directive.

Tina Baudtler, Representant
2018.08.14

CUSTOMER SERVICE

*You are always welcome to give your feedbacks, reviews or ask us about our equipment and products.
Kellfri AB is constantly working on further developing their products and therefore reserves the right to modify, among other things the design and appearance without further notice.*

Kellfri

KELLFRI AB
Phone no: +46 (0)511 - 242 50
Fax: +46 (0)511 - 168 33
E-post: info@kellfri.se