

# **Kellfri®**

## **27-PD83 POSTDRIVER**



**READ THIS MANUAL CAREFULLY BEFORE USING THE PRODUCT !!!**

**TRANSLATED FROM THE ORIGINAL**

**TABLE OF CONTENTS****PAGE**

---

Introduction	3
Product information	3
Technical data	3
Basic Safety Information	4
Product safety information	4
In case of emergency	5
Personal protection	5
Warning labels	6
Before use	7
Information about the machine - Safety	8
Introduction	8
Safety when using the machine	9
Gasoline & Exhaust System	9
Personal protective gear	9
Warning about vibration	10
Warning during maintenance	10
Instructions for use of the machine	11
Before Use	11
Machine safety	12
Engine restart	12
Operating the machine	12-13
Maintenance	14-18
Troubleshooting	19
Exploded diagram of the machine	20-21
Complaint form	23
Warranty and EC-declaration of conformity	24

### INTRODUCTION

Thank you for choosing a product from Kellfri AB. By following general safety information, operating instructions and common sense, you will have many years of enjoyable use of the product. Kellfris equipment and products are aimed to be use by active farmers with high demands on functionality.

### PRODUCT INFORMATION

- Efficient
- Gentle on posts
- Dependable 4-stroke engine
- Fuel-efficient
- Low engine noise

An excellent tool for fencing with posts. Easy to start and simple to operate. Its own weight of 18.4 kg plus the power from the 4-stroke motor make it easy to carefully knock posts into the ground. A 83 mm collar protects the top of the post as it is driven in. The vibration-resistant handles ensure a good working environment. With a large transparent tank and an extra handle on the top making it easy to move the machine.

### INTENDED USE

The machine is used to push poles into the ground.

ART. NO	27-PD83
Engine Size	36 cc 4 stroke petrol
Effect	1,0 kW (1,3 hp)
Fuel consumption	0,65L/h vid 7000 RPM
Pole-size capacity	Max diameter: 83 mm
Start	Pull Start
Weight	18,4 kg
Noise level	>90dB Hearing protection is a requirement
Capacity	Striking power 34 joule, 1,720 strikes/minute

## BASIC SAFETY INSTRUCTIONS

Before using the product, please read the safety information and instruction manual and understand its contents for your own and others' safety. Always keep the safety information and instruction manual easily accessible to the user of the product. Remember that it may be good for your own and others' safety to read the safety information every now and then. If the instructions manual is damaged or otherwise unusable, please contact and order a new one from: Your retailer

The general safety instruction is also available from Kellfri's website: [www.kellfri.co.uk](http://www.kellfri.co.uk)

Do not use this equipment if you are feeling sick, tired or in influence of alcohol. Nor if you are under the influence of strong medications or drugs, suffering from strong depression or severe mental illness. Always follow the general traffic rules and regulations and the rules of the Animal Welfare Act. Persons under 15 years old and people with mental illness may not use these products.



- Read the instruction manual carefully before using the machine!
- Do not run the engine in a confined space, exhaust fumes contain carbon monoxide, which is deadly if inhaled. Not intended for use indoors.
- The machine may only be used in the manner described in this manual.
- Risk of burns upon contact with hot surfaces such as the exhaust system.
- Run the new machine at low speed the first few hours, not high speed and full load.
- Avoid getting gasoline / oil on the skin. If this happens, rinse carefully with water.
- Avoid inhaling gasoline fumes while refueling. Tighten fuel cap securely.
- Do not have fuel or other explosive substances close during use of the machine. Store fuel only in containers intended for this purpose.
- Refuelling is not allowed indoors and when the engine is running.
- Never leave the machine with the engine running. Turn off the engine when leaving the machine, even for a short while.
- Only you operating the machine is allowed to be in the vicinity of the machine during work.
- Do not use the machine without all guards are fitted correctly.
- Check and clean the work area from harmful objects such as large rocks, branches etc. before starting the operation to avoid accidents.
- Do not alter the engine settings unless it is told by the engine manufacturer. The engine speed must never exceed the value indicated on the sign
- Do not use the machine during bad weather or poor visibility, e.g. in thick fog.
- Be careful when working close underground to power lines. Review the work area before starting the operation.

## INCASE OF EMERGENCIES

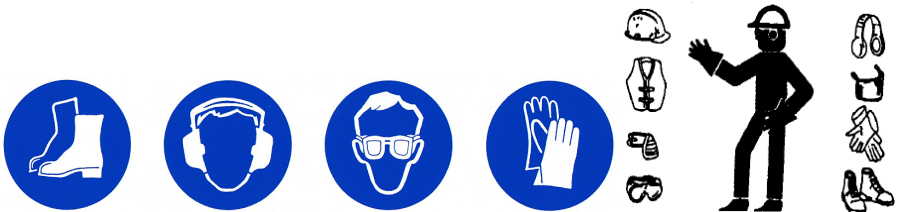
In case of an emergency please dial 112.

Keep cell phone or emergency phone available specially when working alone. First aid kit and fire extinguishers must be kept easily accesable during all work, maintenance and service.



## PERSONAL PROTECTION

Always use suitable protection equipment. Do not wear loose clothing or jewellery while working with the equipment. Long hair should be tied up when working equipment that has moving parts. Use protective gloves as there is a risk of burns if any hot surfaces are touched such as exhaust pipes, and avoid getting oil and petrol on skin. Ear defenders must be worn whilst the engine is running.



## SURROUNDINGS




Make sure your working area is clear from people, children and objects before installing and using the machine. Risk of serious injuries can occur during operation. Take an extra caution when children are in the area where the equipment/ product is being use or stored. Check the area for low hanging electrical wires. Be careful when working on slopes and near ditches.


Always work alone with single - purpose tools/products. Never have junk lying in your area. Keep working areas clean. Always respect the risk zone.



**WARNING LABELS**

Make sure that the warning labels are always visible, clean the warning labels if necessary. Do not wash with high pressure washer directly on the warning label. If any part of the decal is worn or label becomes frayed or otherwise unreadable, order new decals.

SYMBOL	EXPLANATION
	Danger zone 5 m
	Warning! Accident risk for children!
	The equipment is CE-marked



**NOTE!**

The product must not in any circumstances be modified without permission from the manufacturer. Unauthorized modification of the machine and/or accessories can cause greaseal injuries or death to operator or others.

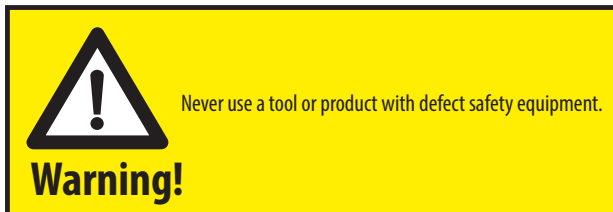
## STEPS BEFORE USE

Carefully read the safety instructions and the operating instructions. Make sure that you understand the safety instructions, operating instructions and warning decals. Use common sense when using the product and suitable personal protective equipment. Always check the performance of the machine combination to be used. It is important that these are in harmony and work satisfactorily. This is done to ensure the equipment or product work as expected, and to guarantee the safety of yourself and others. Carry out a visual inspection of the equipment or product before use. Repair or replace damaged or worn parts to reduce the risk of injury.

Grease moving parts and check that all nuts and bolts are tightened. Correct if necessary. Learn and remember the correct working method. Beginners must work slowly until they have learned how the machine or product works. Users/customers are responsible for ensuring users can handle the situation. If users feel that the machine is dangerous to use, it should not be used.

Learn and remember the correct working methods. Beginners should always keep a low speed, use extreme caution before routine and product knowledge is achieved. The user/customer is responsible to handle the situation correctly. The product should not be taken into use unless it can be done in a safe way for the user.

- Refuel
- Check the work area before starting work and remove objects that can cause accidents. Make sure that there are no buried power lines or water pipes where you're going to drive a post.



## **GASOLINE POWERED POST DRIVER : OPERATOR SAFETY AND USER MANUAL**

Reference: For the optimal use and to avoid dry firing or misfiring of the engine, follow the instructions below:

Always keep 4.5 kg to 5.5 kg pressing force during operation

1. Keep the machine straight to the post during operation
  2. Do not allow the machine pipe to come in contact with the ground
  3. Do not press the trigger until the barrel is loaded and the anvil / hammer is resting against the post
- The post driver is supplied with oil in the engine from the test run; check the level before use, do not fill any extra oil until it is needed. Always keep the unit upright when checking the oil level.
  - The machine is delivered with grease in the crankcase; check the level before use, do not add any extra grease until needed. Check the grease in the crankcase approximately every 3 months.
  - In case of dry firing or misfiring; lift the machine from the post and put it back with a certain pressure.
  - Continuous dry ignition or misfire will cause damage to the machine that is not covered by warranty.



## **INTRODUCTION**

Congratulations on your choice of Kellfri gasoline postdriver. We are sure that you will be satisfied with your purchase. The performance of this tool depends on your knowledge of the information in this manual and your understanding of the operation and maintenance of the engine installed on your postdriver.

The machine is powered by a 4-stroke engine. The engine has a separate manual that includes all aspects of operation and maintenance. The manual delivered to you along with this manual. Keep both manuals together with the machine for reference by all operators. Follow all recommended maintenance points for both the hammer and the engine.

Your postdriver comes with a one year warranty on parts (see warranty conditions attached). We suggest you read the warranty information in full and understand its coverage and your responsibilities of ownership.

You will find the warranty included with the manual.



## **SAFETY WARNINGS WHEN USING THE MACHINE**

The purpose of this section is to give you the knowledge of how to use the machine in an efficient and safe manner. Take security seriously; You must read and understand all safety warnings before using the machine for the first time.

The postdriver is intended to be used by knowledgeable adult. Never let children or ignorant people use this machine. Never leave the machine running when it is unattended, turn it off when not in use to prevent unauthorized persons from using it.

Do not use the postdriver for any other purpose more than to hammer down poles in the ground. Misuse can lead to serious injury to yourself or others, as well as causing damage to the machine or other property.

## **UNDERGROUND POWER LINES**

Before operation, always check the location of power lines, contact certified location services to locate them. It can be extremely dangerous if you hit an underground powerline in the ground while working.

Severe injury and or property damage can occur, be absolutely sure you know where underground power lines are located. Underground items that may be present include, but are not limited to: electricity, gas, telephone, water, sewer, cable TV, etc.

## **GASOLINE & EXHAUST SYSTEM**

Gasoline is highly flammable and explosive if handled incorrectly. Storage of gasoline can seriously injure you if not done right. Always use approved containers for fuel. Never attempt to refill the machine with fuel when the engine is hot or running, since there is a risk that fumes might ignite, causing serious injury and damage to the machine.

Never use the machine inside a building or in poor ventilated areas. Exhaust contains toxic gas (carbon monoxide) that can build up to dangerous levels in closed areas. These fumes can cause unconsciousness or death.

## **PERSONAL PROTECTION**

Always use approved safety equipment. Operators and all other persons in the working area must wear protective equipment. Keep in mind that the machine during operation emits sound level that can reach over 100 dB which can also harm others nearby. Personal protective equipment is recommended, but not limited to :

- Hearing protection with minimum grade 4 - more than 22 dB attenuation
- Impact-resistant goggles with side protection
- Gloves and safety boots



## **VIBRATION WARNING**

Extensive use of a engine powered tool exposes the user to vibrations that can cause white finger and carpal tunnel syndrome. These conditions reduce the hands the ability to feel and regulate normal temperature, produce numbness and burning sensations and may cause nerve and circulation damage. If numbness, tingling, pain, clumsiness, weakened grip, whitening the color of the skin, or any other symptoms that occur at any time when using the machine, or when not in use; immediately stop using it and contact a doctor. Continued use of the machine after the occurrence of such symptoms may increase the risk of symptoms becoming more severe and / or becomes permanent.

- The machine is equipped with inner spring dampened handle to reduce vibration transmitted to the operator.
- Use gloves for comfort and grip. Keep your hands warm during operation.
- Check the machine for loose connectors / components, as these can lead to increased levels of vibration.
- Keep a firm grip on the handles at all times, but do not squeeze the handles too tightly.

## **WARNING DURING MAINTENANCE**

If the warning label on your machine is illegible, replace it immediately. Contact your local dealer.

Regular maintenance is essential to keep the machine safe and efficient. Follow all operating instructions carefully. Any damage or defects caused by unauthorized use, parts or modifications to the machine will not be covered by warranty

- Replace damaged parts immediately.
- Replace worn components as soon as they are discovered.
- When using cleaners on the mechanical parts, be sure to follow health and safety regulations, and ensure that you have adequate ventilation.
- Maintenance of the motor must be carried out according to the specifications contained in the attached manual. The operator must understand all the warnings and dangers which are also outlined in the engine manual
- For larger service / repairs on the machine, contact Kellfri.

A page in this manual is intentionally left blank for documentation of maintenance and service records.

## USER MANUAL FOR YOUR POSTDRIVER

Your machine is designed to work as effective and efficient as possible, while being extremely powerful and easy. It is very important to understand that the machine is a powerful tool. With proper use and maintenance, your machine will give you many years of enjoyable use.

To reduce the risk of serious injury or death to yourself or others; You must read and understand the safety and operating instructions. Every new user who uses this machine must be trained and fully understand the instructions. Never allow anyone inexperienced person to use the pole driver.

- This gasoline postdriver is 100 percent independent; no other power sources: such as hydraulic or air compressors required.
- Fitted with special centering sleeve fits most types of entries / posts
- Be sure to read and understand the instructions for the engine.
- Your engine is "skewed," meaning that it is designed to work in all angles.
- For optimal performance, the machine is designed to be used with grease low degree viscosity; we recommend Mobilux EP0. Other types of grease may damage the performance of the machine.

## BEFORE STARTING

### FOLLOW THESE GUIDELINES WHENEVER YOU USE YOUR MACHINE!

Check the engine oil \*

NOTE! The motor is filled with oil at the factory! See engine manual for oil levels.

\* Use 10W-30 oil.

**IMPORTANT!** Do not overfill the oil when refueling. Keep the machine upright when checking the oil level!

The correct oil level is essential for the proper operation of the machine. Overflow of the oil will result loss of power and can cause permanent damage to the engine

- Check the fuel level, only use regular unleaded gasoline.
- Visually check the hammer and barrel; look up into the pipe and check the junk or foreign objects.
- Check all fittings and tighten if necessary.
- Do not use the machine if there is any damage or wear on any of the control devices or safety devices.
- Be sure to use all the recommended personal protective equipment.

**IMPORTANT!** While operating the machine, it is important to always check that the hammer moves freely. Grease the tube before starting the operation and then grease it every second hours of operation. If the machine is going to be use for a longer period of time, the tube should be controlled so that it is adequately lubricated. Check the tube every time you refill the fuel.

## MACHINE SAFETY

- Place the machine on a solid surface in an open area. Maintain a good safe posture and balance. DO NOT start the machine anywhere, only in an open, well-ventilated place. It is recommended never to use the machine in a closed building.

**IMPORTANT!** When you pull the starter grip, do not wrap the starter cord around your hand or wrist. Do not release the starter handle, rather guide the starter rope slowly back to permit the rope to rewind properly. Do not pull the starter rope to its full length. Failure to follow this procedure can result in serious injury to the hand or fingers, or may damage the starter.

- Move the red button on the throttle to “ON” position (if the engine is cold, close the choke).
- Press the priming b until fuel is visible in the fuel line.
- Pull the starter grip to start the engine, gently return the starter handle to starter position.

## Restarting a hot engine

If the engine is running at a high temperature in a long time, and then is switched off to let it cool down, it may not start on the first draft.

**Note!** If necessary, follow the following procedure; Failure to do so could result in personal injury!

- Switch to “OFF” position; this will prevent the engine from running at maximum speed.
- Move choke to “OPEN”.
- Hold the throttle in maximum speed mode.
- Pull the starter handle three to five times.
- Follow the “safe start” procedures set out above and start the engine with the choke lever in the “OPEN” position.

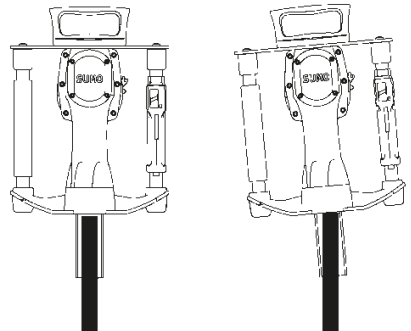
## Hammer down the posts into the ground

- Start the engine in a safe manner as described above
- Use personal protective equipment as described in the previous pages
- Stand firmly with your weight evenly distributed on both feet. Stand with your feet apart flat on the ground at least a shoulder width.

**Note!** Stand firmly with good balance while driving the post / pole

Lift the machine and place it on the pole, make sure the post is centered inside the sleeve.

**Warning! If the post is not properly centered, there may be damage to the machine or the post.**  
**See pictures:**



Press the machine's handle and apply a pressure of about 4-5 kg in order to keep the internal hammer mechanism in the correct position. When you are sure that the machine stands leveled and the post is centered; gently push the throttle until you feel the hammer mechanics running.

- When you are sure that the post goes into the ground easily, press the throttle button completely and push down the pole to the desired height

**Warning!** Always hold the machine with both hands and maintain pressure while pushing the post into the ground.

- Make sure the machine's pipe does not come in contact with the ground; This will bring down the pressure on the machine that can cause unnecessary damage to the machine.
- When the pole reaches the desired depth, trailing throttle completely and carefully lift the machine from the pole, go to the next item and repeat the above procedure.

**Warning!** Always disconnect the throttle fully to stop the hammer mechanics before taking the machine off the post, you can leave the engine idling, there is no need to repeatedly turning the engine on and av.

### Refueling

- Shut off the engine "OFF" and leave enough time to allow it to cool before refueling. Use only regular unleaded gasoline

**WARNING!** Never refuel your machine when the engine is hot or running.

- Fill the tank on level ground and avoid spilling fuel on the engine. Always allow spilled fuel evaporate before starting the engine.
- Make sure the fuel cap is tight enough before starting the engine.

**WARNING!** Fuel fumes are highly flammable and can cause serious injury or death if ignited by a spark or heat from a hot engine.

### MAINTENANCE AND SERVICE

The Postdriver has been manufactured and designed to give you years of trouble-free use. Always refer to the engine manual for service and maintenance guidelines for your engine. The following guidelines maintenance will keep your machine in top performance condition. Always be sure to store your machine correctly. Set the machine horizontally or resting on the engine. The recommended method for storing in upright position, if this is not possible, set the machine on a flat surface with the barrel and brush cover supports the machine at an angle, so that the upper handle is in the highest position.

*If you experience a problem with the engine, contact the dealer for service and / or parts.*

**Every use:**

- Check the engine oil level by keeping the machine upright. Lying machine causes the control to give a false indication. Use SAE 10W-30, fill if necessary.
- Check the engine air filter, clean or replace if necessary.
- Check all screws and attachments, tighten if necessary. If you choose to tighten all the bolts with Loctite; you must clean the bolt and bolt hole with cleaning agents to remove any grease remains, Loctite will not be effective if there is grease left.
- Visually inspect the inside of the barrel and hammer, remove junk or foreign objects.

**The first 10 hours of use:**

- Change the engine oil by following the guidelines in the engine manual. Follow the laws and regulations regarding disposal of oil.

**Warning!** Do not overfill; always check the oil level holding the machine upright!

Check the engine and postdriver bolts and attachments, tighten if necessary. If you choose to replace or install some bolts with Loctite, follow the above guidelines regarding Loctite.

**Every three months or 25 hours of use:**

- Change the engine oil following the guidelines in the engine manual. Follow the laws and regulations regarding disposal of oil.
- Replace the air filter. This should be done more often if your machine is used in dusty conditions.
- Check the engine and postdriver bolts and attachments, tighten if necessary. If you choose to replace or install some bolts with Loctite, follow the above guidelines regarding Loctite.

**Every four months or 50 hours of use:**

- Remove the crankcase cover to check the grease level (EP0). The area around the crank must be clean and grease should be visible around the piston. There should be a ring of grease around the wall of the crankcase.
- If the grease around the crankcase is less than 0.5 cm, this is an indication of the grease level is low. Add no more than a couple of tablespoons EP0 grease, do not fill the crankcase with too much grease.

**WARNING!** Do not fill the crankcase with more grease than necessary; This can damage the machine and engine! See Picture 2



Picture 2

- If the grease is very dark or black in color, or is full of junk, this requires additional maintenance, as described in the “service of the hammer.”
- If the old grease is removed completely, the level of new grease should be to the bottom of the crank pin (about 3 or 4 tablespoons) See Picture3 below



Picture 3

**Every 12 months or 250 hours of use:**

- Follow the above regular maintenance instructions for each 3rd month or 25 hours of use.
- Follow the above instructions for regular maintenance every 4th month or 50 hours of use.
- Remove and service the hammer and clean according to the guidelines in the “maintenance of hammers”
- Replace all O-rings and seals. Get renovation kit containing all O-rings.

**Note!** The amount and type of grease used in the machine is critical to the performance and lifetime. Insufficient grease will cause errors, and too much grease will weigh down the piston and affect the power. Use only approved EP0 grease, which is available from your local supplier.

**Note!** ALWAYS reassemble unit attached dressing with Loctite BLUE 243. Clean all bolts and holes with cleaning agent to remove all traces of grease, otherwise Loctite WILL NOT BE EFFECTIVE!

If you experience performance problems with your postdriver, see the troubleshooting section of this guide for possible solutions or contact your local service provider for help.

## Maintenance and cleaning of your machine

### Impact hammer

- Loosen and remove the 6 screws in the lower part of the machine. Be aware that the handle has anti-vibration springs installed under tension. The washer in the suspension dampening device usually settles in the lower part of the drive unit. Check the damper and inspect the O-rings and metal components for wear or dirt.

**IMPORTANT!** Remember the correct mounting arrangement of the parts of the suspension device, because they must be assembled in the same order when the parts are reassembled.

- Remove the piston (the hammer that hits the post) and remove the O-ring and replace it. The hammer is made of high quality hardened steel and should not show any signs of wear. Clean the hammer carefully.

Picture 4 och 5



Picture 4, Bottom view



Picture 5, Suspension device, top and bottom hammer

**IMPORTANT!** While operating the machine, it is important to always check that the hammer moves freely. Grease the tube before starting the operation and then grease it every second hours of operation. If the machine is going to be used for a longer period of time, the tube should be controlled so that it is adequately lubricated. Check the tube every time you refill the fuel.



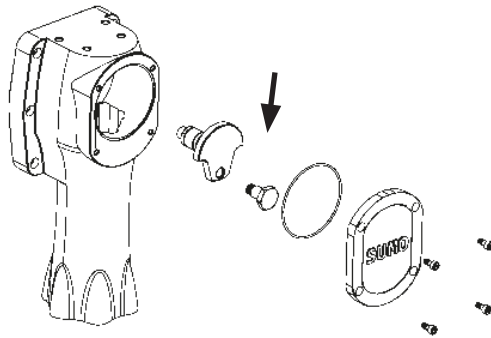
### The upper part of the hammer

- To remove the upper hammer, gently tap the house, keep the machine vertically on a bench, the upper hammer should slide out of the cylinder without any problem. Remove the O-ring and replace it with a new one. Upper striker hammer is made of high quality hardened steel and should not show any signs of wear. Clean the hammer carefully.
- In order to remove the piston and the drive shaft, you must remove the left-hand drive pin from the handle and gently press the piston through the bottom of the casing. To access the crank pin, see the guidelines set out above in the section entitled "Service crankcase".

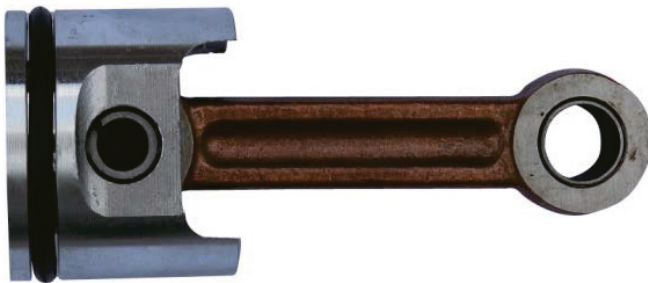
**IMPORTANT!** Be careful when you hold the crankshaft and the drive shaft to prevent damage to these components.

- Clean and inspect the piston and connecting rod. Insert the crank pin into the bearing of the crankshaft to check the gap, if there is excessive gap or looseness in the lateral (side to side movement), it is possible that you may need to replace the drive pin. Check the layer's movement in the piston side, if there is a large gap the crankshaft must be replaced. Locate the O-ring and replace it at this location.

Picture 6 &7



Picture 6. Position of of the left-hand crank pin



Picture 7. The piston connecting rod in place

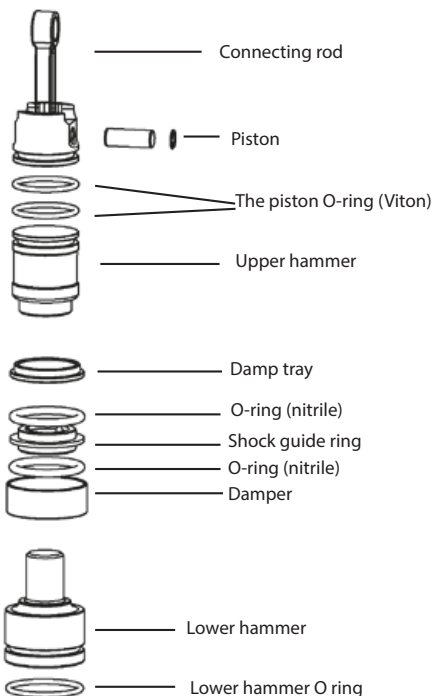
- Clean and inspect the cylinder and crankcase for wear or damage. Replace damaged or worn parts.
- Remove the handle's internal spring, clean and lubricate them. Check the handle holder for damage and or wear, clean and grease the top and bottom of the handle.

## Assembly of postdriver

After cleaning and drying the components and the cylinder thoroughly you can begin to reassemble the machine.

1. Apply a small amount of grease EP0 around the O-ring and outside the piston and gently push it back into the housing with the help of a rubber hammer.
2. Add a small amount of EPo grease on the crank pin and reassemble it. REMEMBER! This is left threaded! Tighten the crank pin with torque (228tun / Pounds) approximately 25Nm do not tighten too hard!
3. Lubricate the outside of the hammer with EPo grease and press it gently into the house with the O-ring on top.
4. For the lower hammer section, lubricate it with a small amount EPo and press the lower hammer into the guide tube.
5. Assemble the damping device, use EPo grease to all components.

NOTE! The hammer " Guide ring" should be fitted properly so that the side with the large beveling (Slightly rounded edge) is facing down towards the lower hammer.



**Picture 8**

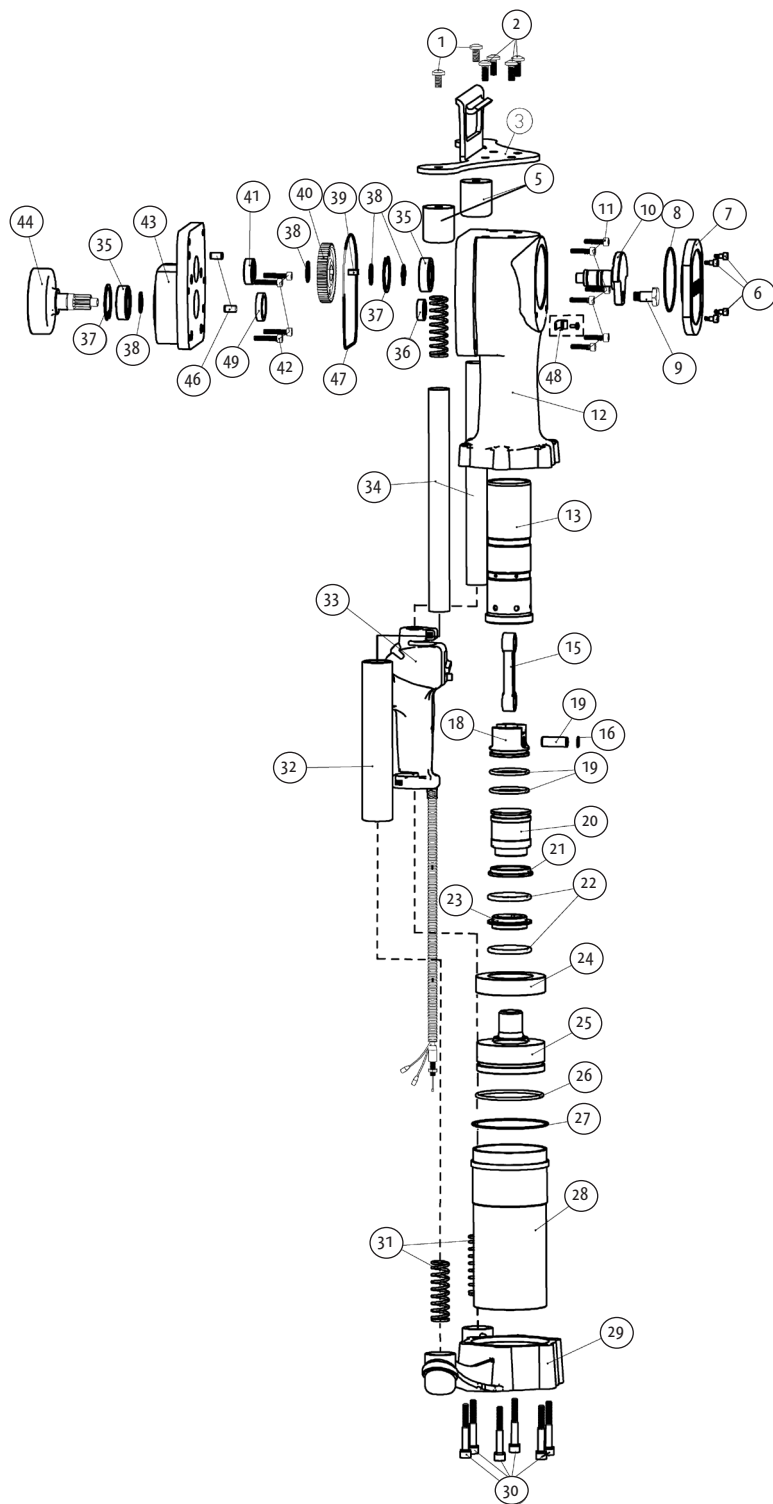
6. Re-install the spring washer on the upper side of the lower hammer.
7. Remount the bottom of the control section of the house do not forget to mount the lower O-ring
8. Put vibration springs back in the handlebar and install the upper and lower handle sleeve. When the parts are assembled correctly, there will be resistance from the springs, this is normal.
9. Replace the the lower bolts apply Loctite; you must clean the bolt and bolt holes with celaning agent to remove any grease, otherwise Loctite will not be effective if the grease is still present. Tighten the bolts is about 15 Nm (132 inch / pounds)
10. Add about 4 tablespoons EPo grease on the crankcase and install the cap and apply Loc-tite on all the bolts: clean the bolts thoroughly

**IMPORTANT!** All bolts should be tightened correctly in an alternating pattern, machine damage occurs from loose bolts or lost bolts due to improper installation.

Please contact the dealer directly if you have any service questions or need parts.

## TROUBLESHOOTING THE MACHINE

- If the machine sounds normal, but the hammer does not strike as it should. Check and make sure the hammer is fully engaged. There is a security measure that frees the hammer in the event of dry ignition or misfire in the engine. To resume work, simply lift up the driver above the pole and then re-place it with a bit of force to put down the hammer towards the pole. Avoid repeated misfiring and maintain 4-5kg pressure at all times!
- Check the type of grease in the crankcase; Use only the grease EPO as recommended! EPO is low viscosity grease for machines with fast moving parts that provide a lot of friction. If you use another type of grease, it will lower the performance of your machine and possibly damage it or your engine. If you have greased the driver with the wrong grease, you must follow the instructions in the maintenance section to replace grease in the crankcase.
- Check the amount of grease in the crankcase. If the machine is over lubricated, it will cause a reduced performance and put unnecessary stress on the motor and to the piston. It should be about 4 to 5 tablespoons of visible grease in the crankcase. There should be room for the moving parts to move.
- If the machine is low on grease, it will reduce the performance of the machine. Open the crankcase cover, visually check the amount of grease in the driver. You should always see a bit of grease in the machine. When you see the grease left on the posts, this is a good sign; This means that your machine is self-lubricating.
- If you feel that the hammer is not moving as freely as it should, you can spray WD-40 up into the cylinder to lubricate and clean this area. Sometimes you get pieces of junk coming from the posts and get up into the cylinder.
- If the engine seems to overheat and do not function properly, the problem could occur because it does not receive enough air or too much pressure has built up. You can easily fix this by puncturing holes in the tank vent hose. Unscrew the cap and remove the black plastic top to access the rubber gasket in the white lining of the gas cap. Use a paper clip or similar tiny sharp object to puncture a hole in the rubber in the middle of the vent hose, reinstall the black plastic top lid and screw the gas cap in place.
  - In the event that the post cracks and gets stuck in the barrel follow this procedure:
  - Remove 6x bolts in the lower part of the hammer and separate the bottom portion from the top of the machine
  - Slide the bottom to expose the pole. By using an appropriate tool, cut the pole exactly where the crack is
  - When the pole piece is removed, reassemble the parts. Follow the tightening of bolts as described in the "Service".



NO.	DESCRIPTION	QTY.
1	Bolt m8x15	2
2	Bolt M8x20	4
3	Bracket	1
5	Handle sleeve	2
6	M5x15 Hex Head Bolt	4
7	Crankcase cover	1
8	O ring 76 x 2.65	1
9	Crankpin	1
10	Crankshaft	1
11	M6x30 Hex Head Bolt	6
12	Body	2
13	Cylinder	1
15	Connecting rod	1
16	Locking ring 12	1
17	Pin 12 x 32	1
18	Piston	1
19	O ring 42.5 x 3.8	2
20	Hammer	1
21	Shock Washer	1
22	O ring 44 x 5.3	2
23	Shock guide ring	1
24	Shock absorber sleeve	1
25	Lower-Hammer	1

NO.	DESCRIPTION	QTY.
26	O ring 78 x 3.8	1
27	O-ring 92 x 2.65	1
28	Pipe	1
29	Lower part	1
30	M8x60 Hex Head Bolt	6
31	Anti-vibration spring	4
32	Dampers - handle	1
33	Switches	1
34	Handle shaft	2
35	Bearing 6004-2RS	2
36	Bearing 6000-2RS	1
37	Locking ring 42	2
38	Locking ring 20	4
39	Wedge 6x6x12	1
40	Gear	1
41	Bearing 6201-2RS	1
42	M6x30 Hex Head Bolt	4
43	Coupling housing	1
44	Clutch drum	1
46	Guide pins	1
47	Gasket	1
48	Clamp	1
49	Oil seal	1



We are grateful for your help pointing out any inaccuracies in the Kellfri product delivered to you. Before making a complaint read Kellfris general warranty and sales conditions in our catalog as well as the enclosed User’s manual that comes with the machine.

Please fill in the details below and attach photo and other information in order to process your request.

Buyer:	Customer number:
Adress:	Invoice number:
E-mail:	Phone nr:

When was the product delivered?	When was the product taken into operation?	Did the product functioned as it should upon the first operation?
---------------------------------	--	---

Defect product / part:  
.....

Problem description:  
.....  
.....

Describe the sequence of events:  
.....  
.....  
.....  
.....  
.....  
.....  
.....

Other:  
.....  
.....

Submit Complaint form and photo to:  
Kellfri AB  
Division of Services : Contact Kellfri retailer  
Or e-mail service.  
info@kellfri.se

Signature:	Date:
------------	-------

## WARRANTY TERMS AND CONDITIONS

Validity of the warranty - Kelifri's Warranty is valid 12 months from the date of purchase.

This warranty replaces - Compensation for spare parts after acknowledgment that the fault lies on the material or manugreaseuring deffects.

This guarantee do not cover

- Labour costs
- Travel expenses
- Any modification that the buyer himself has/had made.
- Any consequential damages that occured due to damage to the machine.
- Damage due to normal deterioration of the machine, inadequate: service, user inexperience or use of spare parts which are not original.
- Wear parts such as hoses, seals, oils, and mechanical belts



## EG-FÖRSÄKRAN OM MASKINENS ÖVERENSTÄMMELSE, ORIGINAL

EC-DECLARATION OF CONFORMITY

According to 2006/42/EC, Annex 2A

Kelfri AB

Munkatorpsgratan 6

532 37 Skara, Sweden

Declares that the machine

Name: 27-PD83

Type: Postdriver

Complies with all applicable provisions of the Machinery Directive 2006/42/EC.  
Other equipment must meet the hardware requirements of the Directive.

Tina Baudtler, CEO 2015-09-08

*Kelfri AB is constantly working on further developing their products and therefore reserves the right to modify, among other things the design and appearance without further notice.*

## CUSTOMER SERVICE

You are always welcome to give your feedbacks, reviews or ask us about our tools and products.

Kelfri AB

Phone: 0046 (0)511 - 242 50

Fax: 0046 (0)511 - 168 33

E-mail: [info@kelfri.se](mailto:info@kelfri.se)

**Kelfri®**