

23-TV07PRO

TIPPING AND FORESTRY TRAILER ATV PRO



NOTE! The winch is sold separately

Kellfri

Read this manual carefully
before using the product!
Translated from the original

INTRODUCTION

Thank you for choosing a product from Kellfri AB. Compliance with the general safety instructions, instruction manual and sound common sense will guarantee many years of enjoyment using the product. Kellfri’s equipment and products are aimed at self-employed farmers who have stringent performance demands.

PRODUCT DETAILS

- Removable insert floor with 2 mm tread plate
- Powder coated
- 4 x fold-down bolsters
- 2 adjustable side stabilisers for use during loading
- 1 parking jack for tow bar, adjustable by means of crank
- Crane tower attachment can be adjusted

Removable insert floor

With the floor fitted, you can transport loose material. The floor has a 2 mm tread plate. The sheet metal pattern gives extra carrying capacity with low dead weight. Patterned sheet metal provides better protection against slipping, better water run-off than smooth sheet metal and it is more resistant to pointed loads. Attach the winch to the eyelet in the front edge of the floor to tip it. Front side and tailgate are removable.

Technical Specification	23-TV0PRO
Width	1250 mm
Weight	320 kg
Length	3400 mm
Max load	700 kg
Wheel	22 x 11-10
Ground clearance	300 mm
Tow coupling	50 mm

SAFETY INSTRUCTIONS

Before using the equipment or product, and for the safety of yourself and others, you must read the safety instructions and instruction manual and understand their contents. Always make the safety instructions and the instruction manual easily accessible to users of the equipment or product. It is a good idea to read the safety instructions from time to time, both for your own safety and that of others. If the safety instructions or instruction manual gets damaged or in any other way cannot be used, new copies may be ordered from:

Kellfri AB, Munkatorpsgratan 6, SE-532 37 SKARA, Sweden. Tel.: +46 (0)511 242 50

Do not use the equipment or product if you feel ill, tired or are under the influence of alcohol. Do not use the equipment or product if you are taking prescribed medication or drugs, or suffering from severe depression or mental illness. Always comply with general rules of the road and applicable rules stipulated by the Animal Welfare Act. People under the age of 15 and those suffering from mental illness are not allowed to use the equipment.



Warning!

The original design of the trailer must not, under any circumstances, be modified without the approval of the manufacturer. Unauthorized modifications and/or accessories may cause life-threatening injuries or death to users and others.

PRODUCT SAFETY INSTRUCTIONS

Carefully read the instruction manual before using the product.

Compliance with the safety instructions requires that the forestry trailer/tipping trailer is only used as described in these instructions. It is the user's responsibility to read through the instructions and comply with them.

- Read the operating manual of the towing vehicle to be used.
- Always check that the performance of the machine combination to be used with the trailer guarantees safety and functionality.
- Never overload the trailer
- Never leave the driver's seat until the brakes on the towing vehicle have been applied.
- The risk area is 15 metres. Only the operator is allowed to be within the risk area while the trailer is in use.
- Under no circumstances are operators allowed to stand underneath suspended loads.
- Do not leave a loaded trailer parked unsupervised.
- When unhitching the trailer, it must be empty and on a level surface with the trailer wheels secured using suitable brake blocks.
- To stop the trailers movement in the event of an emergency, engage the brakes on the towing vehicle.
- Be aware of the risk of crushing when carrying out winching work.
- As the trailer is not fitted with lights, fit a magnetic rear light or similar when required.
- An SMV (slow moving vehicle) sign must be attached when travelling on public roads.
- The trailer is fitted with a ball coupling for a 50 mm tow bar eye. Max. pulling force is 1,000 kg. Replace the ball coupling if any excess wear is detected
- EU regulations stipulate how fast a vehicle with a non-brake trailer is allowed to drive. Always comply with these regulations.

Kellfri is not liable for any modifications, changes or rebuilds carried out by customers!

INSTRUCTIONS FOR EMERGENCY SITUATIONS

In case of emergency, call 112.

Always have a mobile phone or emergency phone available when working alone. A first aid kit and fire extinguisher must be kept in an easily accessible location when carrying out any work, maintenance and service. To perform an emergency stop, turn off the tractor.

PERSONAL PROTECTION

Always use suitable protection equipment. Do not wear loose clothing or jewellery while working with the equipment. Long hair should be tied up when working with equipment that has moving parts. Use protective gloves as there is a risk of burns if any hot surfaces such as exhaust pipes are touched, and avoid getting oil and petrol on skin. Ear defenders must be worn whilst the engine is running. Helmets with ear defenders must be used while working to prevent knocks from the cabin sides and suchlike in uneven terrain. Wear protective boots with anti-slip soles.



WARNING DECALS

Make sure warning decals are always visible and clean them when necessary. Do not use a high-pressure washer directly on the warning decal. If a decal becomes worn or in any other way unusable, order a new set of decals. An SMV sign must be visible and mounted when travelling on public roads.

The forestry trailer is fitted with the following decals:

SYMBOL	EXPLANATION
	Read the operating manual! Before carrying out work Warning! Before maintenance, servicing, connecting and disconnecting the machine, the tractor/ATV must be turned off and the ignition key removed.
	Risk zone 15 m Respect the equipment's risk zone! Warning! Risk of crushing! Do not permit anyone to stand under suspended loads.
	Greasing after 10 hours of operation Always use stabilisers—loading/unloading Retighten all bolts and connections
	Warning! Keep off the machine! Warning! Accident risk for children! Children are not allowed in the vicinity of the machine
	The product is CE marked

SURROUNDINGS

Check that the work area is free from bystanders, children and objects before hitching or using the trailer. There is a risk of serious bodily harm. Be extra careful if there are children in the vicinity of the area where the equipment or product is used or stored. Check that there are no low-hanging electrical cables within the work area. Exercise caution when working on slopes and close to ditches. Always work alone with equipment or products that are made for working alone. Remove all rubbish from your work area. Keep work areas clean. Always respect the equipment risk zone.



DANGER!

Children must not be left unsupervised in the area

STEPS TO TAKE BEFORE USE

Carefully read the safety instructions and the operating instructions. Make sure that you understand the safety instructions, operating instructions and warning decals. Use common sense when using the product and suitable personal protective equipment. Always check the performance of the machine combination to be used. It is important that these are in harmony and work satisfactorily together. This is done to ensure the equipment or product work as expected, and to guarantee the safety of yourself and others. Carry out a visual inspection of the equipment or product before use. Repair or replace damaged or worn parts to reduce the risk of injury.

Grease moving parts and check that all nuts and bolts are tightened. Correct if necessary. Learn and remember the correct working method. Beginners must work slowly until they have learned how the machine or product works. Users/customers are responsible for ensuring users can handle the situation. If users feel that the machine is dangerous to use, it should not be used.

Warning! Risk of crushing due to moving parts!

Connecting the trailer

- Read through the operating manual
- Check the ball coupling before connecting on the trailer. Then hitch the trailer onto the towing vehicle.
- Operate and carefully check the trailers movements. Check the tire pressure. Max. air pressure 1.5 bar.



Warning!

Never use equipment or products that have defective safety components.

USE

Only those who understand the safety instructions and the operating instructions may use the equipment or product. Take caution and care when working with the equipment and only use it in the way described in the operating instructions. There is a risk of crushing when working with equipment that has moving parts. Be cautious when working with equipment with hydraulic hoses as oil under pressure can penetrate the skin. Immediately seek medical attention if this should occur.

Always work alone with single - purpose tools/ products. Never overload the equipment and respect the risk zone.

Check that the trailer is undamaged before connecting it to the vehicle.

- Loads must be spread evenly across the trailer. Loads sticking out must be well anchored.
- Place the stabilisers on the ground for increased stability when loading.
- The brakes on the ATV/tractor must be engaged when loading and unloading.
- Point the crane arm in the same direction as the wire has to work.
- Calmly and methodically practise the movements used for handling the wire crane.

IMPORTANT: Only tip the trailer on an even surface.

AFTER USE

Wash down the forestry trailer when required.



Warning!

Compliance with the safety instructions requires that the product is only used as described in these instructions. It is the user's responsibility to read through the instructions and comply with them.

TRANSPORTATION AND STORAGE

Check that the work area is free from bystanders, children and objects before driving off. Always observe additional caution during transport and moving. Ensure that the equipment or product is well anchored and existing transport lashings are fitted. Always position the load as low as possible. Respect the risk zone even during transport and moving. Do not permit anyone to walk under suspended loads when carrying out lifts. Trailers used for transport should have brakes that work. Always keep the equipment or product on a dry surface, preferably under a roof when not in use. Ensure that the equipment or product is stable and cannot fall over. Never permit children to play at the storage site. Be aware of the tipping risk!

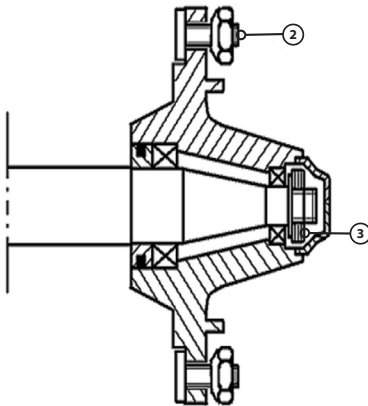
MAINTENANCE AND SERVICE

Make sure the trailer is stable and cannot tip over when carrying out maintenance and service work. Replace damaged or worn parts to reduce the risk of injuries. Carry out maintenance, service and checks in line with recommendations. Only use spare parts with equal performance to reduce the risk of injuries and breakdowns. All repair work and electrical connections must be carried out by a qualified technician.

Check that all nuts and bolts are tightened after maintenance and service work. Contact Kellfri for spare parts. Regularly check the condition of the product. If cracks, twists, bends, gaps or wear are discovered, stop using the equipment and rectify the fault. Worn parts must be replaced.

Never perform welding on the tow bar eye as this may affect its durability.

Service	Interval	Measure
Tyres	Before each use	Check the air pressure in the tyres. It must always at least be the recommended pressure, max 1,6 bar
	Before each use	Check that all cables and hoses are intact.
Wheel nuts	Perform an initial check after 2-3 hours of operation, and subsequently 2-3 times a year.	Retighten all the wheel nuts, 80 Nm
Trailer parts	Regularly, at least 3 times a year,	check by performing a visual inspection of any brakes, lights, SMV signs, tow bar eyes, axles, bogie eyes, hinges and turntable bearings (if installed). Replace worn and damaged parts.
Trailer	After each use	Wash down with clean water if necessary.



CARE INSTRUCTIONS

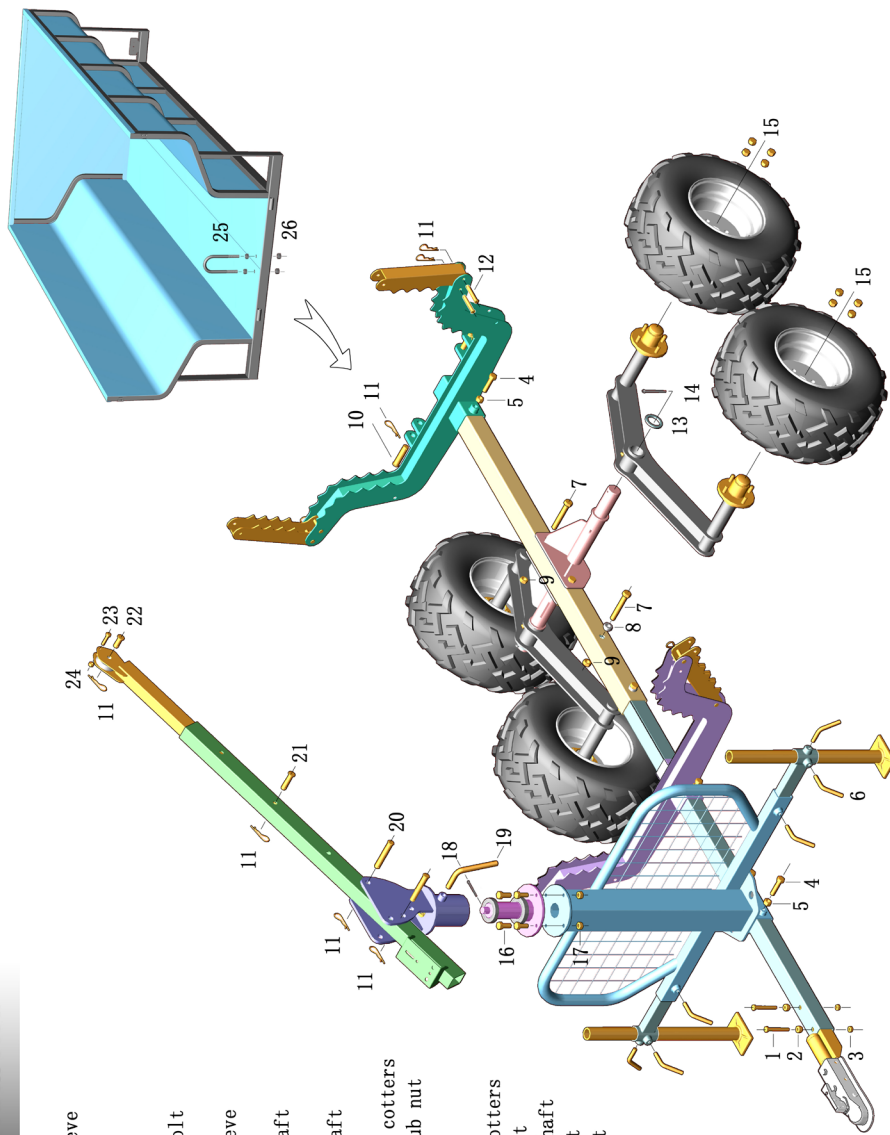
- 1. Do not overload the tractor and trailer!
- 2. After wheel replacement, check that the wheel nuts are tightened and repeat after a stable period of operation. The tightening torque must not exceed 80Nm. Use a torque wrench if possible.
- 3. Check that the bearing setting is correct to prevent bearing play and abnormal bearing wear. The bearing setting should preferably be too loose than too tight.

RECYCLING

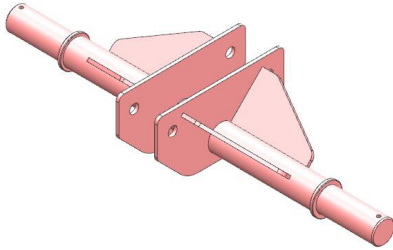
When scrapping, the equipment should be dismantled and transported to a designated recycling station. Contact your municipality for further information.

ASSEMBLY DRAWING

1. 2-M10*90 bolt
2. 2- Φ 10 bolt sleeve
3. 2-M10 nut
4. 6-M12*50 bolt
5. 6-M12 nut
6. 6-M12*30 "L" bolt
7. 4-M16*120 bolt
8. 2- Φ 16 bolt sleeve
9. 4-M16 nut
10. 2-18*80 pin shaft
11. 14- "R" pin
12. 8-12*70 pin shaft
13. 2- Φ 45 washer
14. 2- Φ 6*60 split cotters
15. 16-M12 wheel hub nut
16. 4-M12*35 bolt
17. 4-M12 nut
18. Φ 5*50 split cotters
19. M12*50 "L" bolt
20. 2-18*110 pin shaft
21. 16*60 pin shaft
22. 16*50 pin shaft
23. M8*50 bolt
24. M8 nut
25. "U" bolt
26. 4-M12 nut



PARTS - TRAILER



1x - Frame

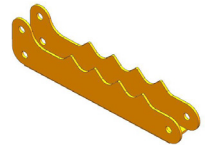


2x - Bogie axle

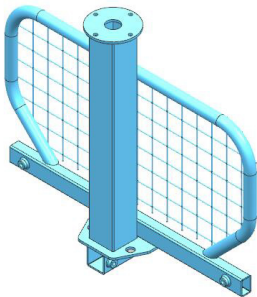


1x - Beam - front

1x - Beam (rear)



4x Holders (bolsters)



1x - Headboard

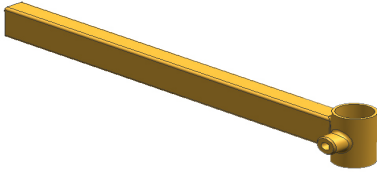


4x - Wheel



1x - Center beam

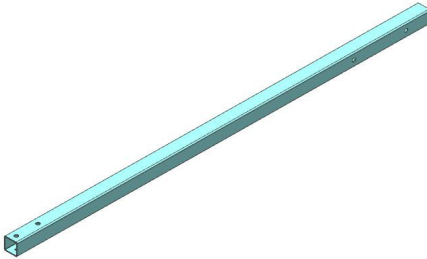
PARTS - TRAILER



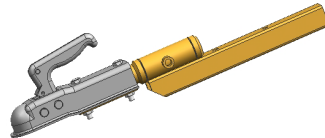
2x - Support leg holder



2x - Support leg



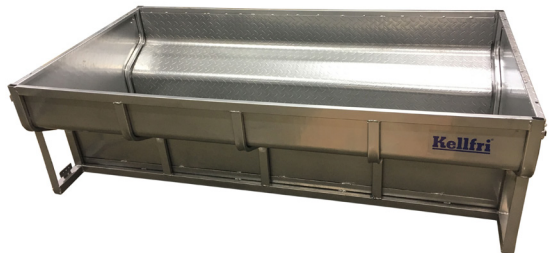
1st - Connecting bar



Tow bar with ball coupling



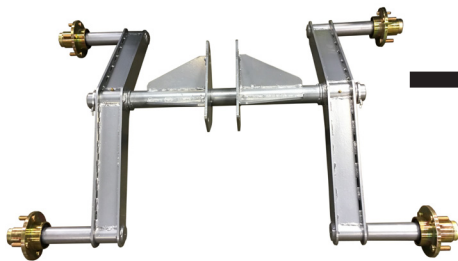
1x - Jack stand



1x- Bed

MOUNTING - TRAILER

1. Mount the boogie axle on the right and left side of the frame. See picture below:



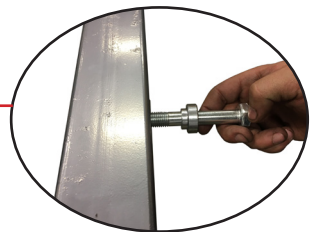
2. Then fit all wheels. Note The wheel tracks should point to the direction of travel, there is an arrow on the tyre that shows the direction.



3a. Mount the center beam



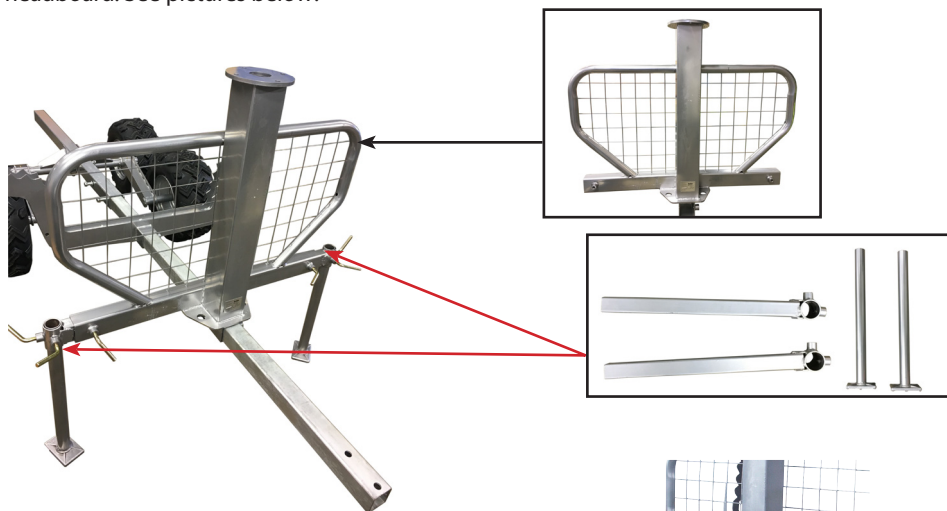
3b. Mount the connecting bar into the center beam



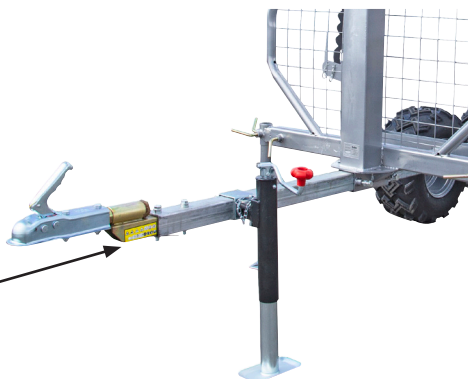
4. Front beam is mounted before the headboard.



5. Mount the headboard, support bracket and support legs are mounted on each side of the headboard. See pictures below:



6. Mount the tow bar and jack stand. Note! the jack stand is fitted on the connecting bar before mounting the tow bar.



7. Mount the rear beam and all four holder (bolsters)



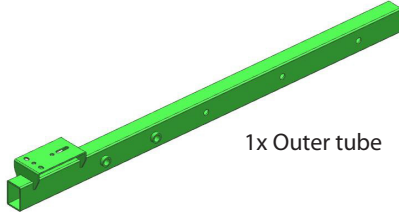
8. Install the bed onto the trailer.

Lift the bed carefully and secure with pin shafts. Check and make sure all bolts and nuts are tightened before use.

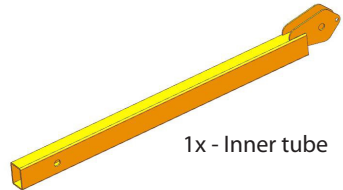


Crane Assembly

Mount the rotary housing to the upper frame on the headboard, tighten all bolts and mount the crane holder. Mount the crane's outer tube in the desired position and then mount the inner pipe.



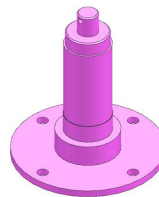
1x Outer tube



1x - Inner tube



1x - Crane holder



1x - Rotary housing

Kellfri

Claims form

We are grateful for your help in pointing out any defects in the product supplied to you by Kellfri. Before making a claim read Kellfri's general purchase terms and conditions in our catalogue or on our website www.kellfri.se, as well as in the instruction manual if supplied.

Please provide the details below and append photos as documentation so that we can process your case.

Purchaser:	Customer number:
Address:	Invoice number:
E-mail:	Telephone daytime:

When was the product supplied?	When was the product put into operation?	Was the product working on delivery?
---------------------------------------	---	---

Product/part for which a claim is being made:

Description of fault:

Describe the course of events:

Miscellaneous:

Send the claim form and a photograph to:

Kellfri AB
Service department
Munkatorpsgratan 6
SE-532 37 Skara, Sweden

Or e-mail Service.

info@kellfri.se

Signature:	Date:
-------------------	--------------

KELLFRI AB
Munkatorpsgratan 6
SE-532 37 SKARA, SWEDEN
Phone: +46 (0)511 242 50
Fax: +46 (0)511 168 33

Web
www.kellfri.se
E-mail
info@kellfri.se
Edition: 1 January 2014

WARRANTY TERMS AND CONDITIONS

Validity of the warranty	- Kellfri's Warranty is valid 12 months from the date of purchase.
This warranty replaces	- Compensation for spare parts after acknowledgment that the fault lies on the material or manufacturing defects.
This guarantee do not cover	<ul style="list-style-type: none">• Labour costs• Travel expenses• Any modification that the buyer himself has/had made.• Any consequential damages that occurred due to damage to the machine.• Damage due to normal deterioration of the machine, inadequate: service, user inexperience or use of spare parts which are not original.• Wear parts such as hoses, seals, oils, and mechanical belts

EC-DECLARATION OF CONFORMITY, ORIGINAL



According to 2006/42/EC, Annex 2A
Kellfri AB
Munkatorpsgratan 6
532 37 Skara, Sweden

Declares that the machine

Name: 23-TV07PRO

Type: Tipping and forestry trailer ATV PRO

Complies with all applicable provisions of the Machinery Directive 2006/42/EC.
Other equipment must meet the hardware requirements of the Directive.

Tina Baudtler, CMD
2018.08.21

CUSTOMER SERVICE

*You are always welcome to give your feedbacks, reviews or ask us about our equipment and products.
Kellfri AB is constantly working on further developing their products and therefore reserves the right to modify, among other things the design and appearance without further notice.*

Kellfri

KELLFRI AB
Phone no: +46 (0)511 - 242 50
Fax: +46 (0)511 - 168 33
E-post: info@kellfri.se