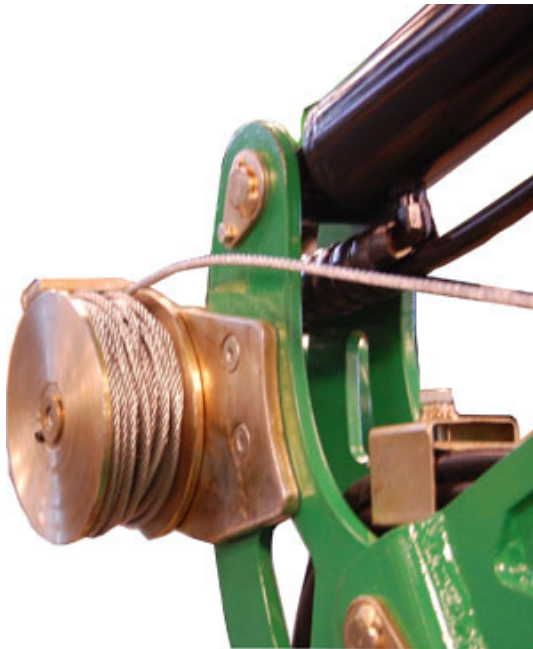




Kellfri®

21-KW1000

RADIO REMOTE-CONTROLLED HYDRAULIC WINCH



CAREFULLY READ THE OPERATING INSTRUCTIONS BEFORE USING THE PRODUCT!

OPERATING INSTRUCTIONS TRANSLATED FROM THE ORIGINAL

Table of Contents

Product information	3
<i>Technical specification</i>	3
Safety information	4
In case of emergencies	5
Personal protection	5
Surroundings	5
Warning decals	6
Measures before use	7
Instruction: using the winch	7
Use	7
Connection diagram to the valve assembly	8
Connection diagram - Winch and drive	9
Connection diagram- Winch	10
Storing,Service and maintenance	11
Exploded diagram: Winch	12
Radio controlled winch	13
Product information: Radio remote control	14-15
Frequencies	16-17
Locking and installation document	18
Complaint form	19
Warranty and EC declaration of conformity	20

INTRODUCTION

Thank you for choosing a product from Kellfri AB. By following the general safety information and the instruction manual and by using common sense, you will have a great and safety use of your Kellfri product for many years. Kellfri designs and delivers effective, affordable machinery and components for forest, agriculture, construction and gardening in Sweden, other Nordic countries and Europe.

PRODUKTINFORMATION

Complete direct-drive hydraulic winch for smaller forestry cranes. With a pulling force of 1,000 kg, a 17-metre long 5 mm wire with fitted winch hook, delivered with clamp brackets for winch and diverter pulley, hydraulic hoses, valve block package and remote control unit. Swedish remote control unit for daily use in tough environments, range approx 25 m.

21-KW1000

Hydraulic direct driven winch suitable for Kellfri-Crane 3.4 m and 4.7 m.

Teknisk Data	13-KW1000
Wire length	17 m
Wire diameter	5 mm
Radio control	Standard



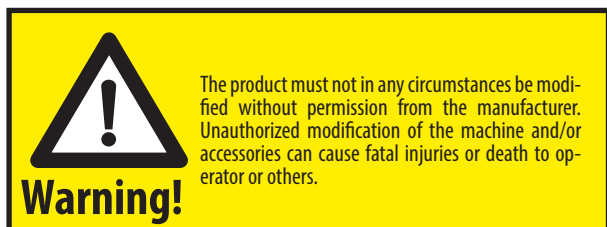
FOR YOUR SAFETY

Before using the product, please read the safety information and instruction manual and understand its contents for your own and others' safety. Always keep the safety information and instruction manual easily accessible to the user of the product.

Remember that it may be good for your own and others' safety to read the safety information every now and then. If the instructions manual is damaged or otherwise unusable If the instructions manual is damaged or otherwise unusable, please contact your retailer.

For more information visit our website: <https://www.kellfri.co.uk/>

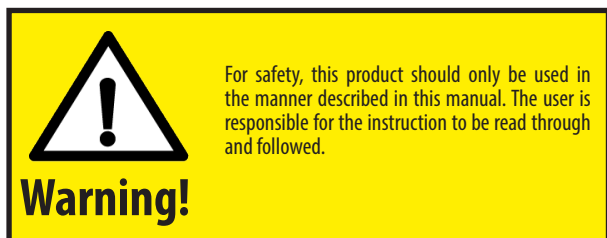
Do not use this equipment if you are feeling sick, tired or in influence of alcohol. Nor if you are under the influence of strong medications or drugs, suffering from strong depression or severe mental illness. Always follow the general traffic rules and regulations and the rules of the Animal Welfare Act. Persons under 15 years old and people with mental illness may not use these product.



PRODUCT SAFETY INFORMATION

For safety reasons the winch can only be used in the manner prescribed in this instruction. The user is responsible for the instructions are read through and followed. Implements connected to the tractor – read the manual of the tractor.

- Read through the crane manual
- Always check the performance of the machine combination to be use with the winch to ensure the safety and performance.
- When the base equipment is overloaded there is a risk that the load could fall uncontrollably. Never overload the winsch, never lift more than allowed weight.
- Danger zone is 15 meter. No one other than the operator may be present within the danger zone while working with the winch. The operator may under no circumstances stand under suspended loads
- Never park the crane with loaded winch above the ground.
- To stop the winch movement in an emergency, turn off the tractors engine.
- When disconnecting the winch from the hydraulic system; the hydraulic system must be free from any pressure and the winch unloaded.



INCASE OF EMERGENCIES

In case of an emergency please dial 112.

Keep cell phone or emergency phone available specially when working alone. First aid kit and fire extinguishers must be kept easily accesable during all work, maintenance and service.

PERSONAL PROTECTION

Always wear suitable clothing and footwear. Do not wear loose clothing or jewelry when using the machine. Remember to put up long hair when operating rotating machines. Wear protective gloves, to prevent risking burns on contact with hot surfaces such as exhaust system, and to avoid oil and gasoline on the skin. Hearing protection should be used when the engine is running.



SURROUNDINGS

Make sure your working area is clear from people, children and objects before installing and using the machine. Risk of serious injuries can occur during operation. Take an extra caution when children are in the area where the equipment/ product is being use or stored. Check the area for low hanging electrical wires. Be careful when working on slopes and near ditches. Always work alone with single - purpose tools/products. Never have junk lying in your area. Keep working areas clean. Always respect the risk zone.








Children in the area should be supervised.

Danger!

WARNING DECALS

Make sure warning decals are always visible and clean them when necessary. Do not use a high-pressure washer directly on the warning label. If a decal becomes worn or in any other way unusable, order a new set of decals.

SYMBOL	EXPLANATION
	Read the instruction manual! Before work begins. Caution Before maintenance, service, connection and disconnection of the machine, the tractor's engine must be switched off and the ignition key removed.
	Danger zone 15 m around the crane when winching Respect the equipment danger zone!
	Warning! Risk of crushing! No one is allowed to stand underneath suspended load.
	Warning! Electrical lines
	The product is CE marked

SAFETY MEASURES BEFORE USE

Read the safety information and instruction manual carefully. Be sure you understand the safety measures, instruction manual and warning labels. Use common sense when operating the machine and use appropriate personal protective equipment.

Always check the performance and the machine combination that are used. It's highly important these matches in a satisfactory manner. This is to ensure the product or the function and most important yours and others safety. Do visual inspection of equipment or product before use.

Fix or replace damaged or worn parts immediately to reduce the risk of injury. Lubricate moving parts and check that all screw-nuts and bolts are tightened. Learn and remember the correct working methods.

Beginners should always keep a low speed, use extreme caution before routine and product knowledge is achieved. The user/customer is responsible to handle the situation correctly. The product should not be taken into use unless it can be done in a safe way for the user.

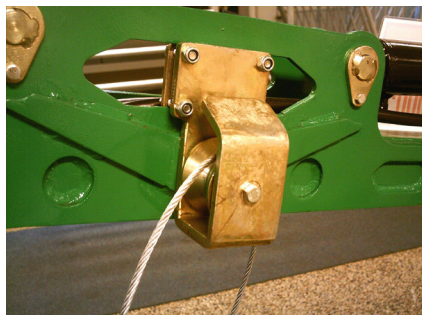


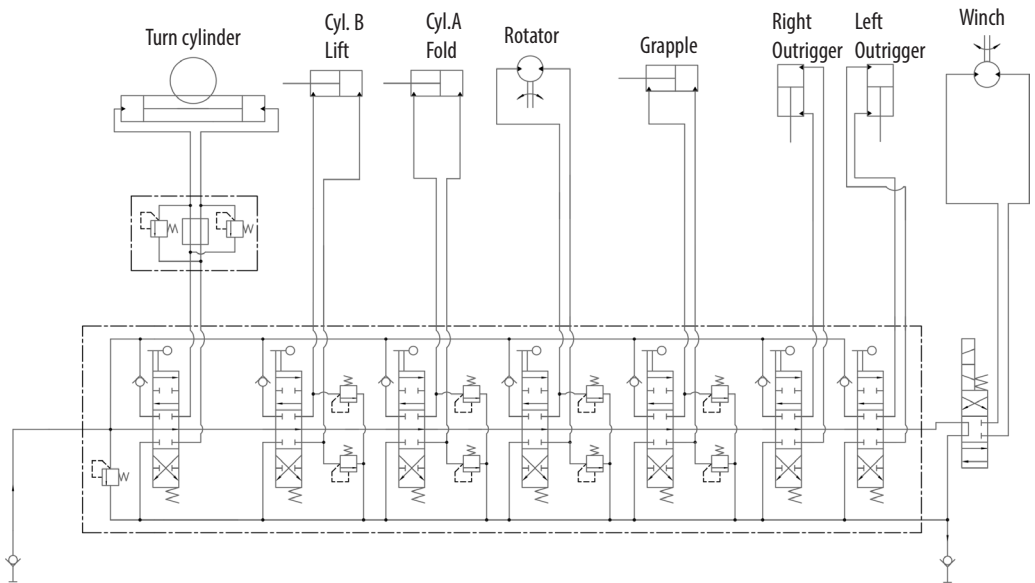
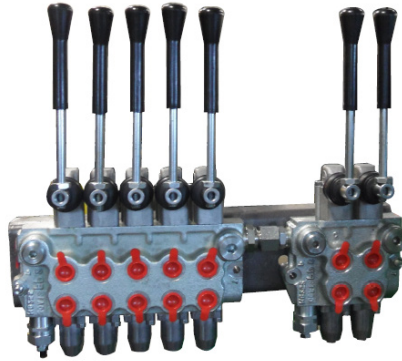
USE

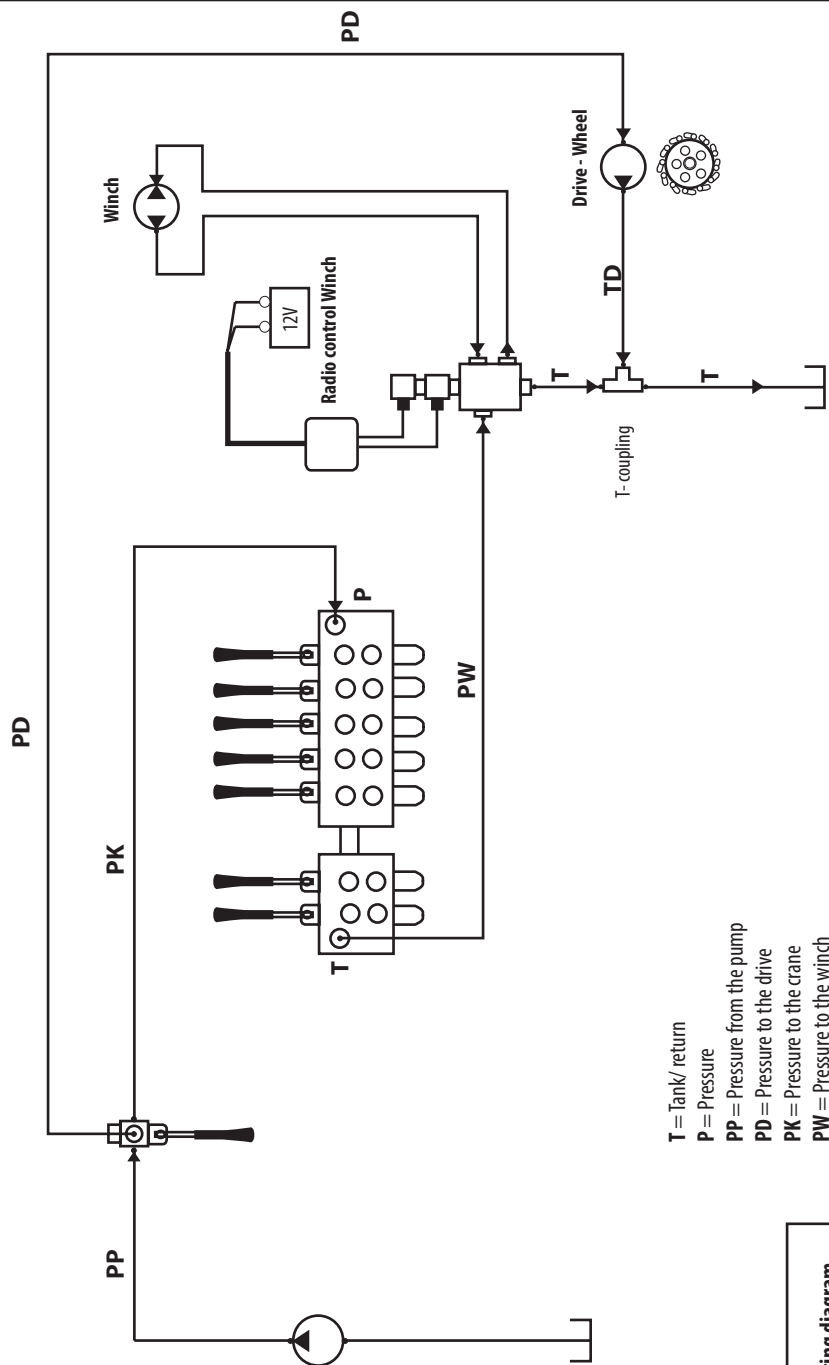
Only people who understand the safety information and instructions in this manual may operate the equipment. Be alert and careful when working with the machine and only use the tool or product in the manner described in this manual. When working with equipment that has moving parts, there is always the risk of injury. Be careful when working with equipment equipped with hydraulic hoses, oil under pressure can penetrate the skin. Seek medical attention immediately if this occurs. Always work alone with the tools that are defined as single purpose tools. Respect the equipment's danger zone.

Install the winch bracket with the wire reel on the crane boom.

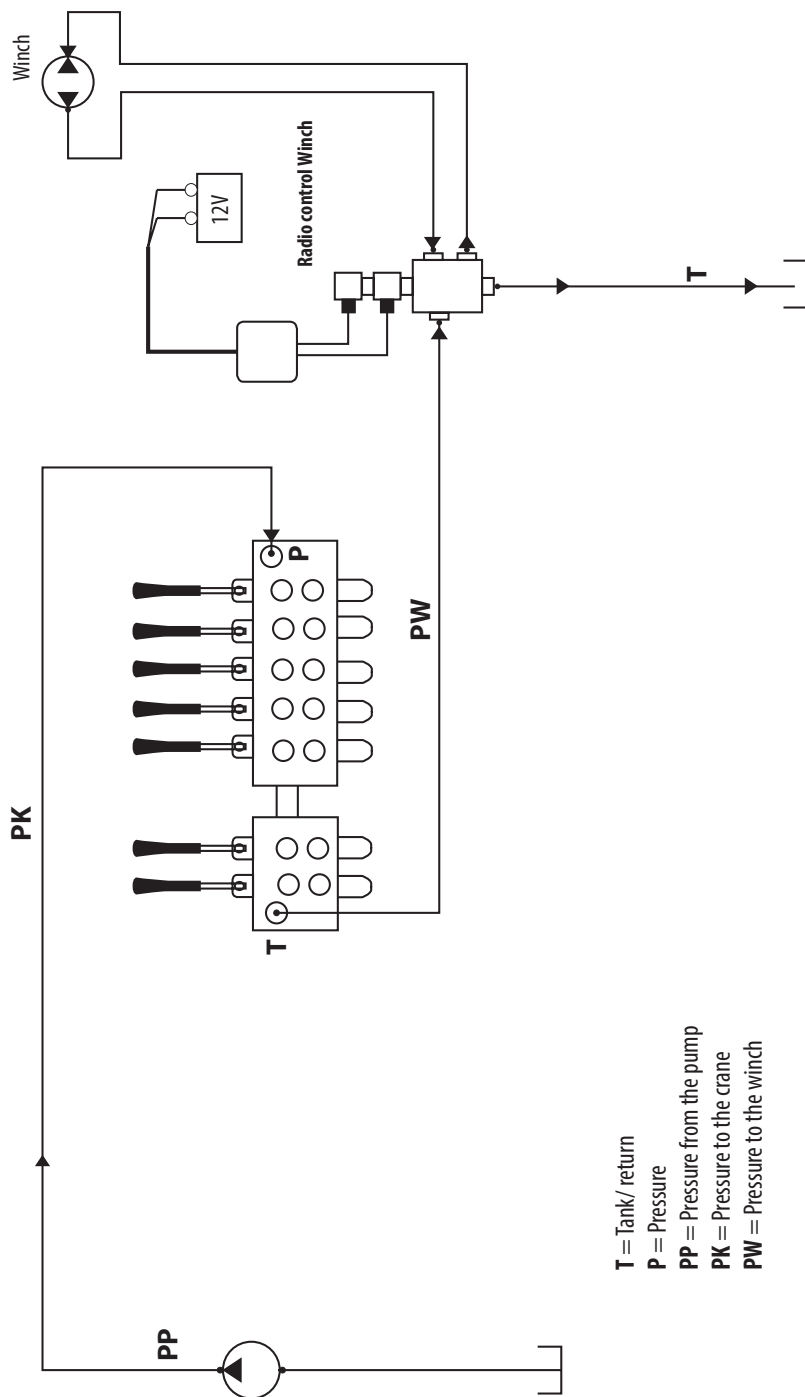
IMPORTANT! Check and tighten the bolts before starting any operation







Connecting diagram Winch and drive



T = Tank/ return
P = Pressure
PP = Pressure from the pump
PK = Pressure to the crane
PW = Pressure to the winch

INSTRUCTION FOR USE OF WINCH AND CRANE

- Check that the equipment is intact before use
- The winch is not approved for lifting. Load trailer using the crane.
- The winch is operated either with the hydraulic valve at the base of the crane or (optional) with radio controlled electric valve. During installation check that you have the correct voltage 12V.
- Align the lifting arm towards the timber to be winched. Place the claw into the ground
- Use the outriggers on the trailer
- Disengage the winch drum.
- Practice the movement pattern slowly and methodically when winching.
- Pull out the wire carefully and tie it around the timber.
- Grease the wire if it intends to get stuck in the wire drum
- Always be careful during winching, there is always risk of crushing.
- Maximum system pressure is 200 Bar och maximum flow of 40l/min.

CONNECTING THE EQUIPMENT

- Check the mounting and the hydraulic connections of the winch. Install the winch on the crane, lock it in place with bolts. Check that the hydraulic hoses do not rub against any obstacle.
- The valve is to be connected to the pressure tube before the crane's control valve.
- Be aware that the winch valve is not prepared for constant pressure system type
- Operate and check all movements

Kellfri AB is working continuously to further develop its products and therefore reserves the right to modify the design and appearance among others without prior notice.

STORAGE

Always keep the tool or product in a dry place, preferably under cover when not in use. Never let children play at the storage site. Keep in mind the risk of tipping!

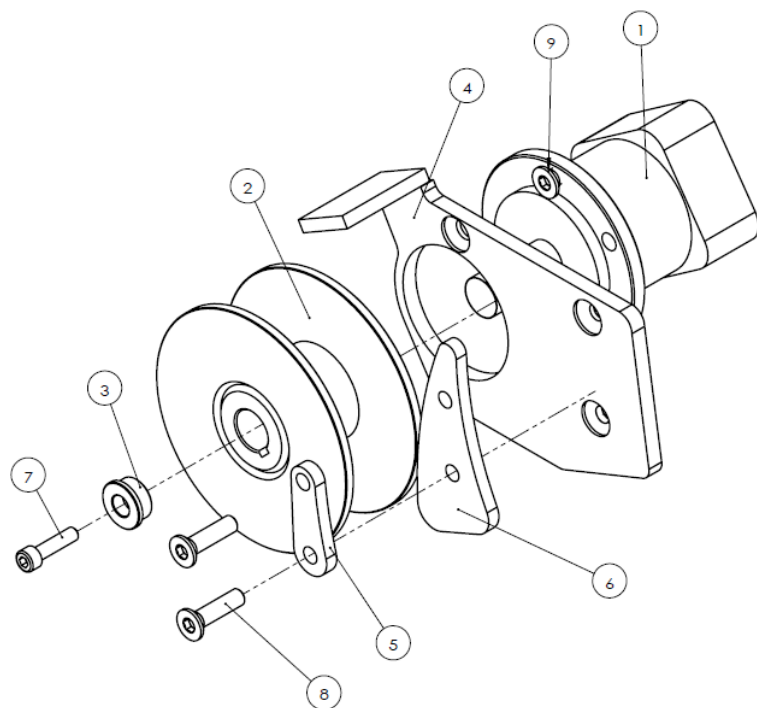
MAINTENANCE AND SERVICE

Replace damaged and worn parts immediately to reduce the risk of injury. Perform maintenance, servicing and inspections as recommended. Use only spare parts with equivalent performance to reduce the risk of damage and failure. All repairs and connections with electricity must be performed by an authorized person

- Regularly check the condition of the winch before failure is a fact. If cracks, twisting, bending, gaps or fatigue is discovered, stop the operation and rectify the error. Replace worn parts.
- Avoid using the equipment at temperatures lower than -20°C and higher temperature than + 30°C .
- Regularly check the locking of the winch to the boom.
- Check that the hydraulic hoses and couplings are intact.
- Only hydraulic oil designed for the purpose shall be used in the hydraulic system.
- Check the cable and pulley are undamaged.
- Lubricate the motor bracket, pulley, gears and wire regularly.
- Rinse the tool with water as needed..
- Check all bolts and nuts are tightened after maintenance and service. Always test the machine before work is started.

RECYCLING

Disposal of the product, the machine should be disassembled and transported to the municipality recycling station. Contact your municipality for further information.



21-KW1000

No	Specification	Qty
1	Motor	1
2	Wire reel	1
3	Sleeve	1
4	Motor bracket	1
5	Bracket	1
6	Mounting bracket for wire reel	1
7	Bolt M8x32	1
8	Bolt M10x40 - countersunk head	2
9	Bolt M10x12 - countersunk head	2

RADIO CONTROLLED HYDRAULIC WINCH



TRANSMITTER

TX1-A

Frequency (MHz)	433.087- 434.662
Channels	64
Fixed individual code	-
Functions	2
Inbuilt antenna	-
Operating voltage	3 AA (LR03)
Power consumption	~20 mA
IP class	IP65



RECEIVER

RX1

Frequency (MHz)	433.087- 434.662
Channels	64
Scans individual codes	-
Winch	depending on model
Relay outlets	3
Antenna	External BNC
Operating voltage	6-26 V AC/DC
Power consumption	20-100 mA
IP class	IP65

PRODUCT SAFETY INSTRUCTIONS

- Read the operating manual carefully before installing and using the product
- Only qualified staff are allowed to install the product
- Turn off the power to the receiver before connecting the equipment
- Check that you have connected the correct terminal block
- Use undamaged cables. Make sure the cables do not hang loose.
- Avoid installing in areas that are exposed to extensive vibrations.
- Place the receiver so that it is well protected from the elements. Cable glands and ventilation plugs must be turned downwards to prevent water getting into them.
- Check that the user is old enough to use the equipment, not under the influence of drugs, alcohol or medication, and that the transmitter is not left unsupervised.
- Only qualified staff may have access to the transmitter and can control the equipment
- Make sure that the user always turns off the transmitter when it is not in use
- Make sure the user has a good view of the work area
- Write down the receiver and transmitter serial numbers/ID codes in the settings document
- Avoid pairing the transmitter with the receiver when it is not in use

The radio system may only be used for functions such as starting and stopping an application. The radio system must not be a safety-related part of a system.

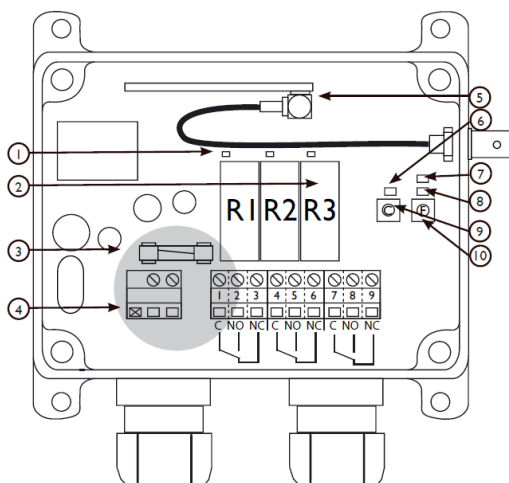
BATTERY WARNINGS

- There is a risk of explosion if the battery is replaced with an incorrect battery.
- Do not dismantle, deform or heat up the battery. Do not short-circuit the battery
- Never attempt to charge a clearly damaged or frozen battery
- Keep out of view from small children. If a child should swallow a battery, seek medical attention immediately.
- Avoid soldering directly on the battery
- Store in a cool place Avoid high temperatures and humidity
- Do not destroy batteries fire

USED BATTERIES AND ELECTRONICS

Incorrectly discarded batteries and electronics damage both the environment and people's health. Batteries and electronic waste may contain toxic heavy metals. If they are disposed of in a rubbish bin, these toxic substances may leak into the ground and pollute seas, lakes and watercourses. Always contact your dealer or local authority for more information about how to recycle electrical products in your area in a responsible manner.

In accordance with the Machinery Directive 2006/42/EC, we recommend that you review the need for a wired emergency stop and other personal injury protection systems.



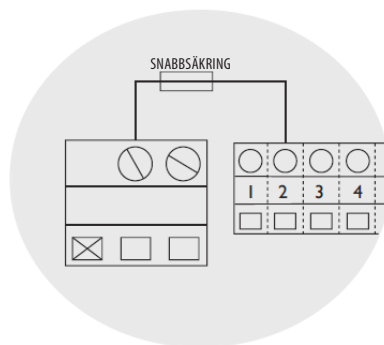
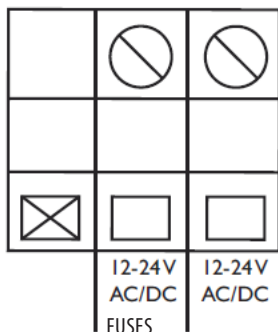
Receiver RX1

1. Relay LED 1-3
2. Function relay 1-3
3. Quick fuse 10 A
4. Terminal block for voltage
5. Antenna contact
6. Code storage LED (red)
7. Power supply (yellow)
8. Function button
9. Coding button
10. Select button

3. Options: Quick fuse

NOTE: With a 10 A fuse fitted and the receiver connected, the operating voltage from the terminal block (12-24 V AC/CD) in the centre is supplied with current from fuse number 1 (terminal block no. 2)

4. Terminal block



Operating voltage	MIN. Power consumption	MAX. Power consumption
12V DC	25 mA	100 mA
24V DC	15 mA	50 mA
24V AC	15 m A	50 mA

CHANGING FREQUENCY BANK

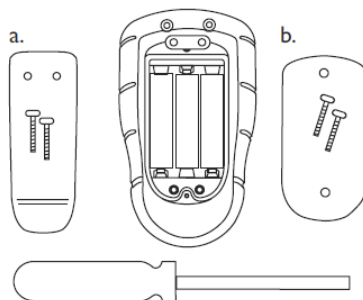
The transmitter is preset in Channel 1 Bank 1

The frequency bank is changed in the transmitter before it is paired with the receiver. If a receiver has already been paired with the transmitter, the receiver must be deleted and the frequency bank changed before the transmitter can be paired again.

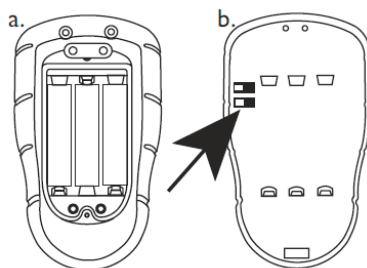
IMPORTANT! The transmitter must be off when switching between banks.

Switch 1=OFF	Switch 2=OFF	➡	Freq.bank 1
Switch 1=ON	Switch 2=OFF	➡	Freq.bank 2
Switch 1=OFF	Switch 2=ON	➡	Freq.bank 3
Switch 1=ON	Switch 2=ON	➡	Freq.bank 4

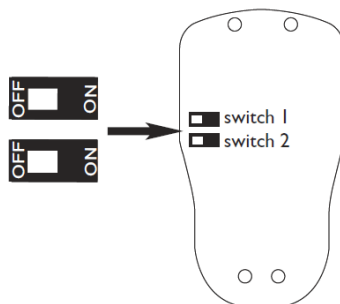
1. a.) Remove the lock belt clip
- b.) Remove the battery cover



2. a.) Take out the batteries (3) and dismantle the battery casing.
- b.) The frequency buttons are located to the left of the circuit board.



3. Check the frequency table and select the frequency bank you wish to use. Set the buttons (see figure) in the correct position in line with the frequency button table above.



4. Then reassemble all the parts.

CHANGING FREQUENCY

- 1. Start the transmitter
- 2. Press the OFF button and keep it pressed
- 3. Within 3 seconds: Press the ON button: Keep both buttons pressed
- 4. Release both buttons
- 5. Within 5 seconds:
 - a. Press the transmitter's IN button to move up a row in the frequency table (see the frequency table)
 - b.) Press the transmitter's OUT button to move down a row in the frequency table (see the frequency table)
- 6. The red LED light flashes three times when the frequency has changed. The transmitter is turned off automatically.

NOTE: If you want to move up or down more than one step in the frequency table: re-start the transmitter and carry out the previous steps one or more times.

There may be a slight delay for the transmitter to connect to the receiver when the frequency is changed.

FREQUENCY TABLE

Channel	Frequency Bank 1 MHz	Channel	Frequency Bank 2 MHz	Channel	Frequency Bank 3 MHz	Channel	Frequency Bank 4 MHz
1	433.075	1	433.100	1	433.125	1	433.250
2	433.175	2	433.200	2	433.225	2	433.350
3	433.275	3	433.300	3	433.325	3	433.450
4	433.375	4	433.400	4	433.425	4	433.550
5	433.475	5	433.500	5	433.525	5	433.650
6	433.575	6	433.600	6	433.625	6	433.750
7	433.675	7	433.700	7	433.725	7	433.850
8	433.775	8	433.800	8	433.825	8	433.950
9	433.875	9	433.900	9	433.925	9	434.050
10	433.975	10	434.000	10	434.025	10	434.050
11	434.075	11	434.100	11	434.125	11	434.150
12	434.175	12	434.200	12	434.225	12	434.250
13	434.275	13	434.300	13	434.325	13	434.350
14	434.375	14	434.400	14	434.425	14	434.450
15	434.475	15	434.500	15	434.525	15	434.550
16	434.575	16	434.600	16	434.625	16	434.650

INTERLOCKING

When interlocking is activated, only one relay can be activated at a time. If interlocking is not activated, all relays can be activated at the same time. STANDARD: Interlocking deactivated (receiver Function LED = turned off)

TURNING OFF INTERLOCKING

1. Start the transmitter and receiver
2. Press the receiver function button
3. The transmitter function LED lights up green when interlocking is activated. Deactivate interlocking by pressing the receiver function button until the LED goes out.

INSTALLATION DOCUMENT

TRANSMITTER SETTINGS

Serial number: _____

Frequency bank/frequency: _____

RECEIVER SETTINGS

Serial number: _____

INTERLOCKING

ON

☐

OFF

☐

We are grateful for your help pointing out any inaccuracies in the Kellfri product delivered to you. Before making a complaint read Kellfris general warranty and sales conditions in our catalog as well as the enclosed User's manual that comes with the machine.

Please fill in the details below and attach photo and other information in order to process your request.

Buyer:		Customer number:
Address:		Invoice number:
E-mail:		Phone nr:
When was the product delivered?	When was the product taken into operation?	Did the product functioned as it should upon the first operation?
Defect product / part:		
Problem description:		
Describe the sequence of events:		
Other:		

Submit Complaint form and photo to:
Kellfri AB
Division of Services : Contact Kellfri retailer

Or e-mail service.info@kellfri.se

WEB

www.kellfri.co.uk

WARRANTY TERMS AND CONDITIONS

Validity of the warranty - Kelifri's Warranty is valid 12 months from the date of purchase.

This warranty replaces - Compensation for spare parts after acknowledgment that the fault lies on the material or manufacturing defects.

This guarantee do not cover

- Labour costs
- Travel expenses
- Any modification that the buyer himself has/had made.
- Any consequential damages that occurred out of damage to the machine.
- Damage due to normal deterioration of the machine, inadequate: service, user inexperience or use of spare parts which are not original.
- Wear parts such as hoses, seals, oils, and mechanical belts

EG-FÖRSÄKRAN OM MASKINENS ÖVERENSTÄMMELSE, ORIGINAL

EC-DECLARATION OF CONFORMITY

According to 2006/42/EC, Annex 2A

Kelifri AB

Munkatorpsgratan 6

532 37 Skara, Sweden

Declares that the machine

Name: 21KW1000-34, 21-KW1000-47

Type: Radio remote-controlled hydraulic winch

Complies with all applicable provisions of the Machinery Directive 2006/42/EC.
Other equipment must meet the hardware requirements of the Directive.



Tina Baudtler, VD

Kelifri AB is constantly working on further developing their products and therefore reserves the right to modify, among other things the design and appearance without notice.

CUSTOMER SERVICE

You are always welcome to give your feedbacks, reviews or ask us about our tools and products.

Kelifri AB

Telefon: 0511 - 242 50

Fax: 0511 - 168 33

E-post: info@kelifri.se

