

FARMI®

Forest



PRIMERO

9000 -3951

9000 -3967

PRIMERO 9000 –3951 / 3967 is the economical multi-purpose combination designed to meet the demands of the forestry and agricultural industry. It is very well suited for the transportation of timber from the forest to road side and also fire wood length and day to day clearance work on small farms to the largest of estates. The loader has great lifting force, which enables the Primero to be adapted to other work besides timber. Slewing device is equipped with 4 cylinders which guarantees plenty of slewing torque, 2 racks are also fitted to spread the load evenly and to ensure trouble free operation.

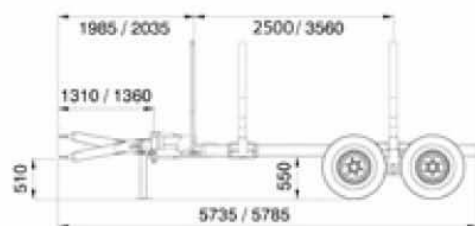
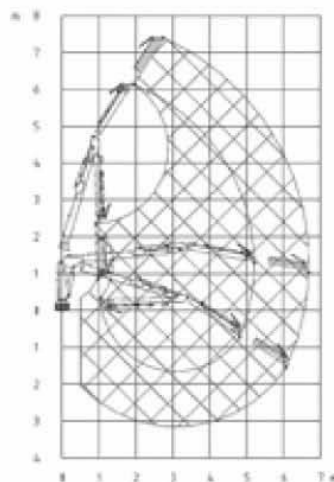
Support legs are designed for increased stability even when on unstable ground. The 400 tyres fitted also ensure stability and manoeuvrability, while ground damage is also kept to a minimum. The basic equipment includes hydraulic support legs, removable head board, 3 sets of bolsters, hydraulic steering drawbar with 2 cylinders and control valve. Original Farmi HK3861 and HK4066 can also be mounted on new Primero 9000 trailer.



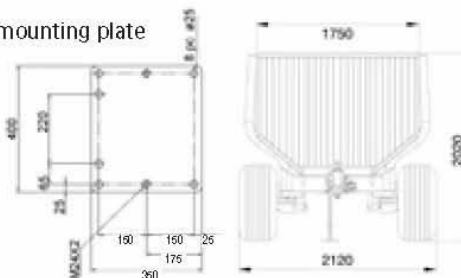
Primero's hydraulic stabiliser legs descend outwards, providing a stable platform to work even from side. Width of these Flap Down model legs (top to top as open is 3200 mm). Primero loaders can also be mounted to the tractor three point linkage.



PRIMERO-loader / forest trailer combination is most suitable for the movement of timber from thinnings to early clear fell. It is also well suited for transporting different materials on work sites/ agricultural land.



mounting plate



TECHNICAL DATA		PRIMERO 3951	PRIMERO 3967
Gross lifting capacity	kNm brutto	39,0	39,0
	kNm net	29,0	26,0
Max. reach	m	5,1	6,7
Lifting capacity	at 4 m	kg 745	kg 705
(without grapple / rotator)	at max.	kg 600	kg 445
Slewing torque	kNm	9,5	9,5
Slewing angle	°	360	360
Grapple area tip to tip	m ²	0,17 (0,20)	0,17 (0,20)
Rotator (continuous rotation)	FR7	FR7	
Grapple rotation torque	kNm	0,70	0,70
Weight of grapple and rotator	kg	95	95
Weight without support legs	kg	810	850
Weight of adapter + support legs	kg	220	220
Recomm. pump capacity	l/m	25-50	25-50
Working pressure	bar	180	180
Tree point linkage attachment		standard	standard
Control valve board	standard	N2 / 4+4	N2 / 4+4
	alternative	2 lever on/off	2 lever on/off

TECHNICAL DATA	PRIMERO 9000
Load capacity	9.000 kg
Load area	2,05 m ²
Ground clearance	540 mm
Frame tube dimensions	160x160x8 mm
Hydraulic steering	standard
Bolsters	standard 3 pairs
Drum brake	accessory
Wheels	400/60-15, 5PR14
Own weight	1100 kg
Suitable FARM I cranes	HK3861, HK4066



Farmi Forest Corporation
 Ahmolantie 6
 FIN-74510 Peltosalmi
 FINLAND
 Tel +358 (0)17 83 241
 Fax +358 (0)17 8324 372
 www.farmiforest.fi

We reserve the right to make changes.