

**Davies Implements Ltd**  
Telephone: 01267 237726  
www.daviesimplementsltd.co.uk

Working as hard as you



## LumberLite ML26 Mid-Size Band Sawmill



Do you Want to put up fencing, build a shed, design new garden furniture? With the efficiency and capability that come with narrow-kerf bandsaw technology, the new LumberLite ML26 is ready for your kind of project. Its 26 inch (65cm) diameter log-capacity and 17" (42.5cm) throat opening tackle all of your mid-size milling projects with ease.

### Industrial-Grade Powder-Coat

Like all equipment bearing the Norwood name, the LumberLite is protected by industrial-grade powder-coat – electrostatically-applied thermoset polymer cured under heat to create a hard finish much tougher than conventional paint.



### Blade-Guide Rollers

Precision-machined, hardened and zinc-dichromate-plated 1¼" blade-guide rollers each fitted with sealed double ball-bearings.

### Sawdust Exhaust

Sawdust exhausts on far side of mill away from you – not at your feet and in your shoes like other mills.



### Leveling Feet

Equipped standard with leveling feet for quick, accurate bed leveling.

### Smooth Sawhead Feed

Guide the sawhead through the cut with finger-tip pressure – allows you

to judge the best speed for smooth cuts through knots and denser core wood.

### Easy Working Position

Sits on ground level or elevate as desired for easy log loading.

### Smooth-Action Carriage Wheels

Large CNC-machined upper carriage wheels fitted with sealed double bearings key to smooth, effortless rolling action. Rubber under-track wheels for extra security and stability.



### Blade Lube System

Keeps blade pitch-free in softwoods. Water is delivered to the blade at the point of entry into the cut. Large custom-molded water bottle with wide-mouth filling port for easy refilling.



### Comfort-Height Operator's Station

Standard on the LumberLite ML26, the convenience and comfort of the ergonomic tilt operator's station.

### Laser-Straight Track

Laser-machined rail running surface for perfectly straight track/wheel rolling interface.



### Log-Clamping System

Screw-crank log-dog and opposing dual vertical-adjust log-rests hold firm logs in the round, cants, and boards as thin as 1" (2.5cm). Micro-precision log-rest adjusting bolts guarantee perfectly true 90-degree cuts.

### Effortless Sawhead-Adjustment

Patented Norwood sawhead friction-winch system delivers easy, effortless vertical sawhead operation. Auto-sawhead locking eliminates two time-consuming operations.

## Other LumberLite ML26 features include:



### Stable Platform

You can count on the durability and rock-solid stability of the LumberLite. First, start with the all-steel bed designed specifically for ground level milling operations. Couple that with its rigid 4-post carriage frame. Factor in the superior strength and torsional stability of Norwood's patented laminated sawhead construction – the backbone of this little workhorse. The result? – Excellent milling stability and accuracy – through hardwoods and softwoods.

### A Pleasure to Operate

Time-saving patented auto-sawhead locking. Single action throttle-lever activates simultaneous clutch engagement to reduce your workload. And you'll appreciate the adjustable comfort-height operator's station. Because we know that milling should be as much fun as it is productive.

### Pick Your Power

Whether you're looking for economy, or more muscle, or smooth electric power, the LumberLite ML26 offers just the powerplant you need:

- 9hp (270cc) OHV Honda GX270 for reliable performance that's easy on your wallet
- 13hp (389cc) OHV Honda GX-Series delivers solid, smooth horsepower
- 5hp (230V, 30A, 1-Phase) electric ideal for indoor operations

The LumberLite ML26 is a straight-up band sawmill that delivers solid capability, and it carries the reliable, no-nonsense DNA at the heart of every Norwood mill. Add your very own sawmill to your tool-kit. Choose the LumberLite ML26 with confidence and start planning your next project today.

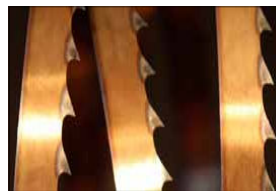
## The Norwood LumberLite is the most economical, reliable, user-friendly compact band sawmill available

- ✓ Mill Hardwood and softwood logs up to 26" diameter.
- ✓ Cut boards and beams up to 17" wide accurately to 1/16" of an inch

Mill what you want, when you want – Your LumberLite ML26 is ready ...



Don't forget a Norwood mill has a 2 year guarantee



## Tailor your LumberLite to match your sawmilling needs – now, or later as your milling operation grows.

### 4-Foot Bed Extension

Increase your cutting length – add one or more optional 4-ft (1.2m) bed extension. Additional log rest/dog clamping assemblies sold separately.



### Lap Siding & Shingle Making Package

Make shiplap and cedar-shake siding quickly and easily. With this unique jig, cut lap-siding 7" – 12" (17.5 – 30cm) wide, with taper widths down to a feather-

edge. Reconfigure the jigs and make cedar-shake shingles 7" – 12" (17.5 – 30cm) wide and up to 20" (50cm) long – Each pass makes two shingles. Two jigs per set.

### Saw Carriage Cover

Protect your investment. Made from the same rugged material used for transport-truck covers – they're rip, rot and UV-resistant. Tailored specifically for the LumberLite ML26 to fit snugly over the whole carriage and equipped with draw-cords.



### Cant Hook

Designed to turn and roll logs while on the mill. At only 30" (75cm) long, this cant hook is nimble and easy to handle. Grips 8" - 32" (20cm – 80cm) diameter logs.